

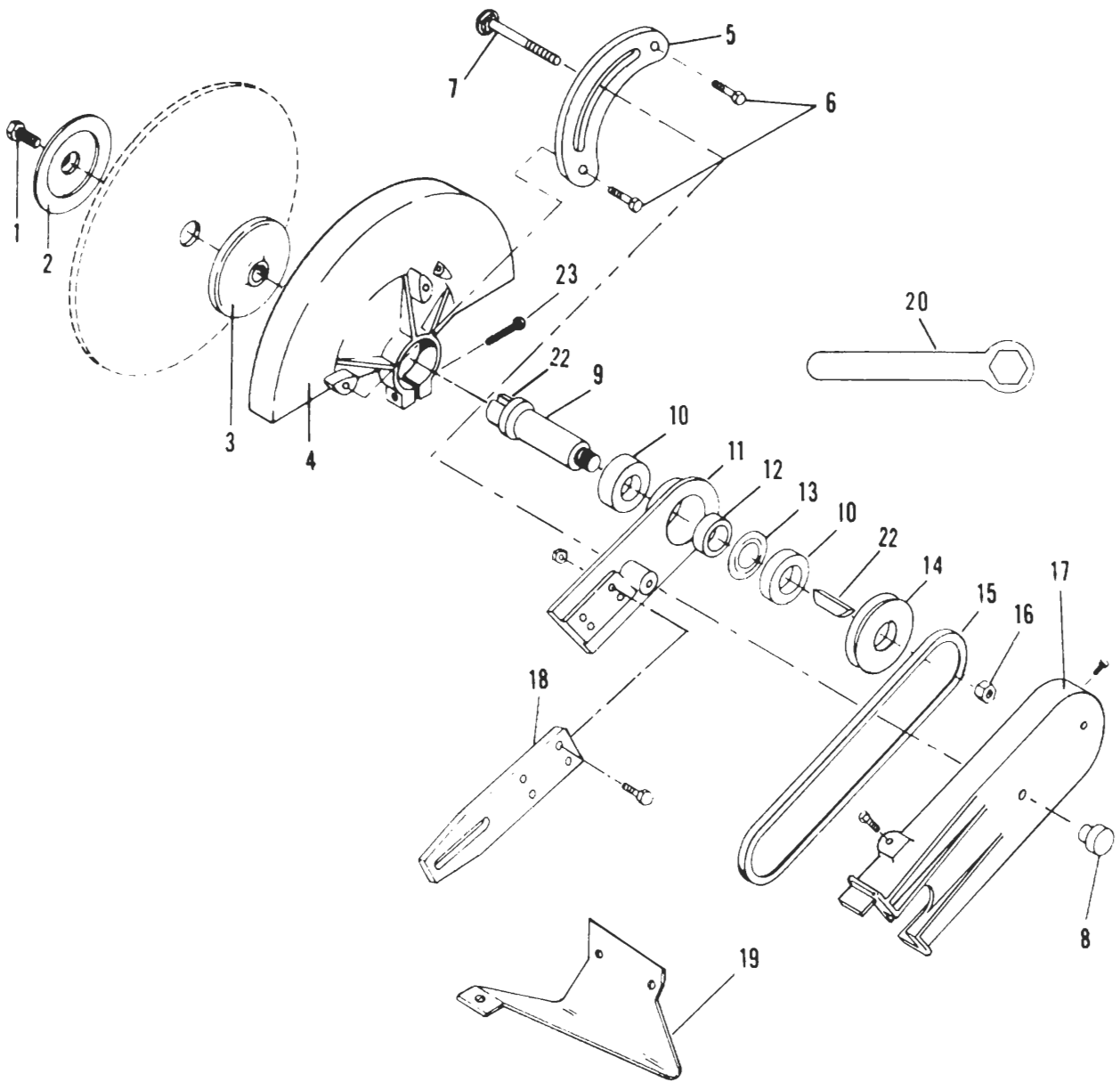
PIONEER

**PARTS
LIST**

**Cut-off
Saw**

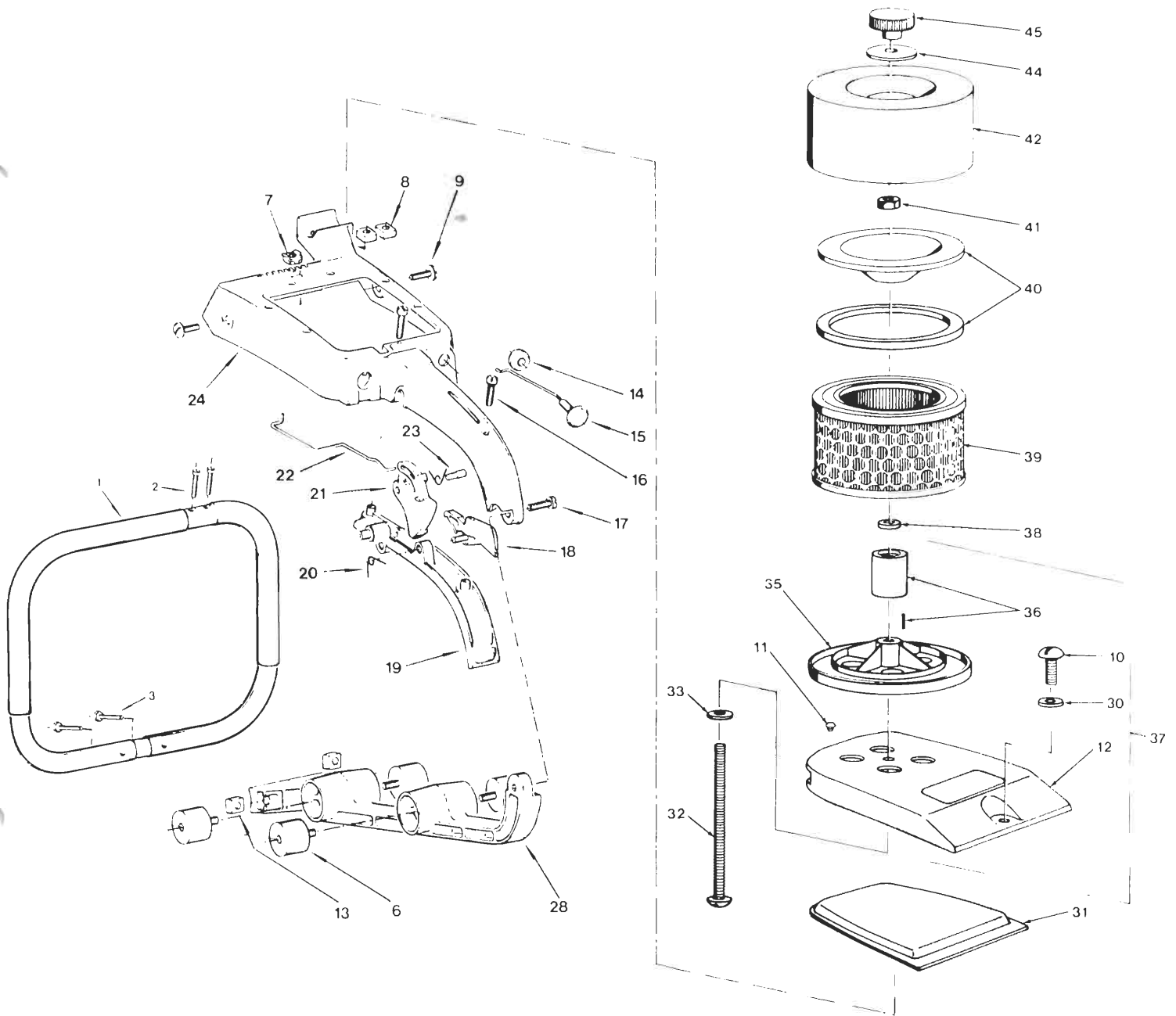
MODEL

P41-12



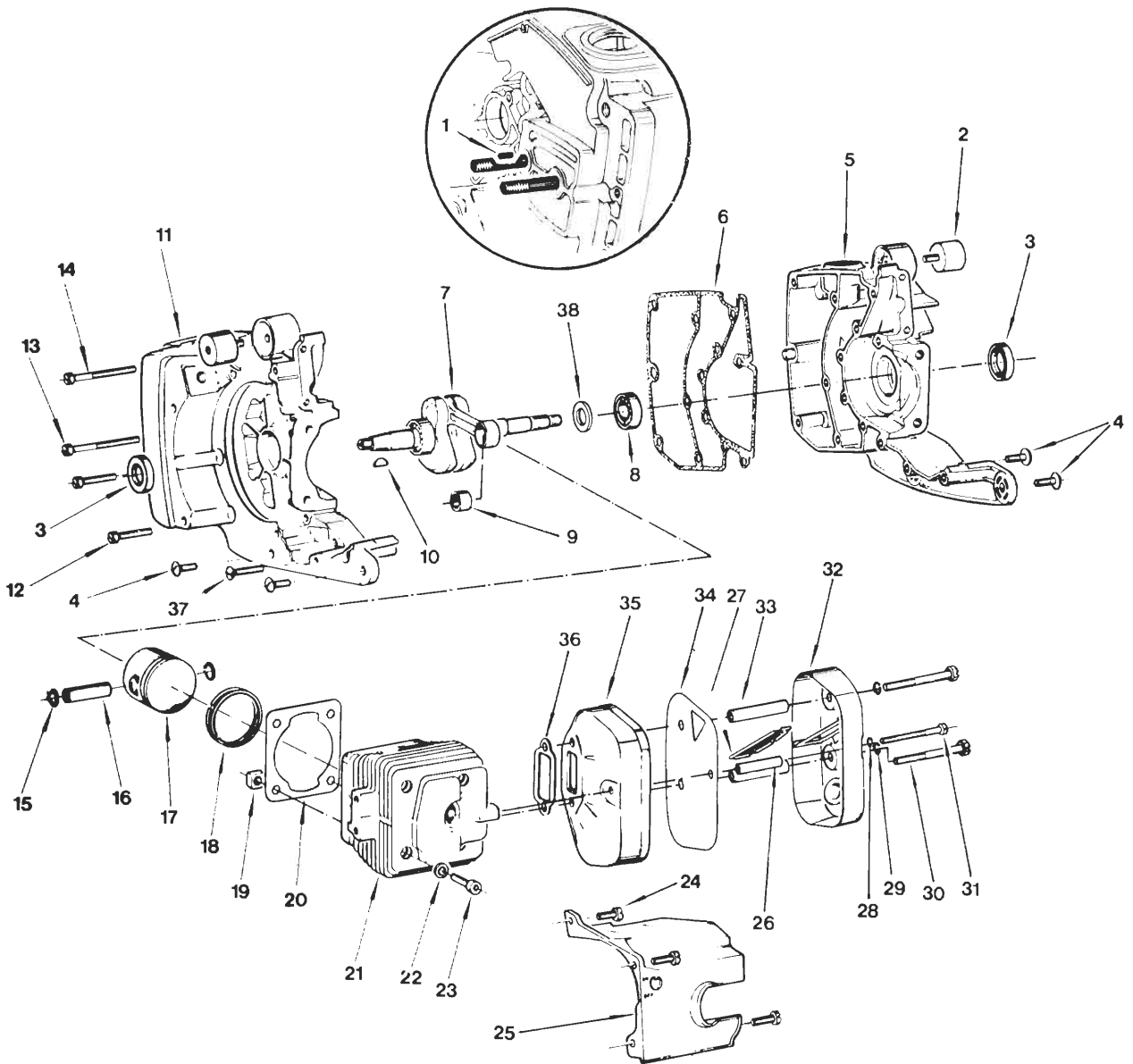
BLADE GUARD ASSEMBLY

INDEX NO.	PART NO.	QTY. REQ.	DESCRIPTION	INDEX NO.	PART NO.	QTY. REQ.	DESCRIPTION
1	020379	1	Blade Shaft Lock Screw	12	071100	1	Spacer
2	071020	1	Outer Collar w Lock Screw	13	071110	1	Spring Washer
3	071030	1	Inner Collar w Key	14	079069	1	Blade Shaft Pulley & Key
4	074036--A	1	Blade Guard Complete (Includes 5, 6, 7, 8 & 23)	15	072015	1	"V" Belt, 3V335
5	071050	1	Clamp Segment w Screws (Incl in Item #4)	16	020216	1	Nut 1/2"—20
6	020489	2	Screw-Clamp Segment (Incl in Item #4)	17	074092--A	1	Belt Guard w Fasteners
7	020126	1	Lock Bolt (Incl in Item #4)	18	074093	1	Arm Bar w Fasteners
8	071060	1	Knob (Item #4)	19	074046--A	1	Foot Complete w Fasteners
9	071070	1	Blade Shaft & 2 Keys	20	110551	1	Blade Shaft Wrench
10	071080	1	Blade Shaft Bearings Set 2	22	020085	2	Woodruff Key
11	074091--A	1	Spindle Arm w Fasteners	23	071047	1	Blade Guard Bolt (Incl. in Item #4)
					074094--A	1	Cutting Head Complete (Includes All Items Except 19)



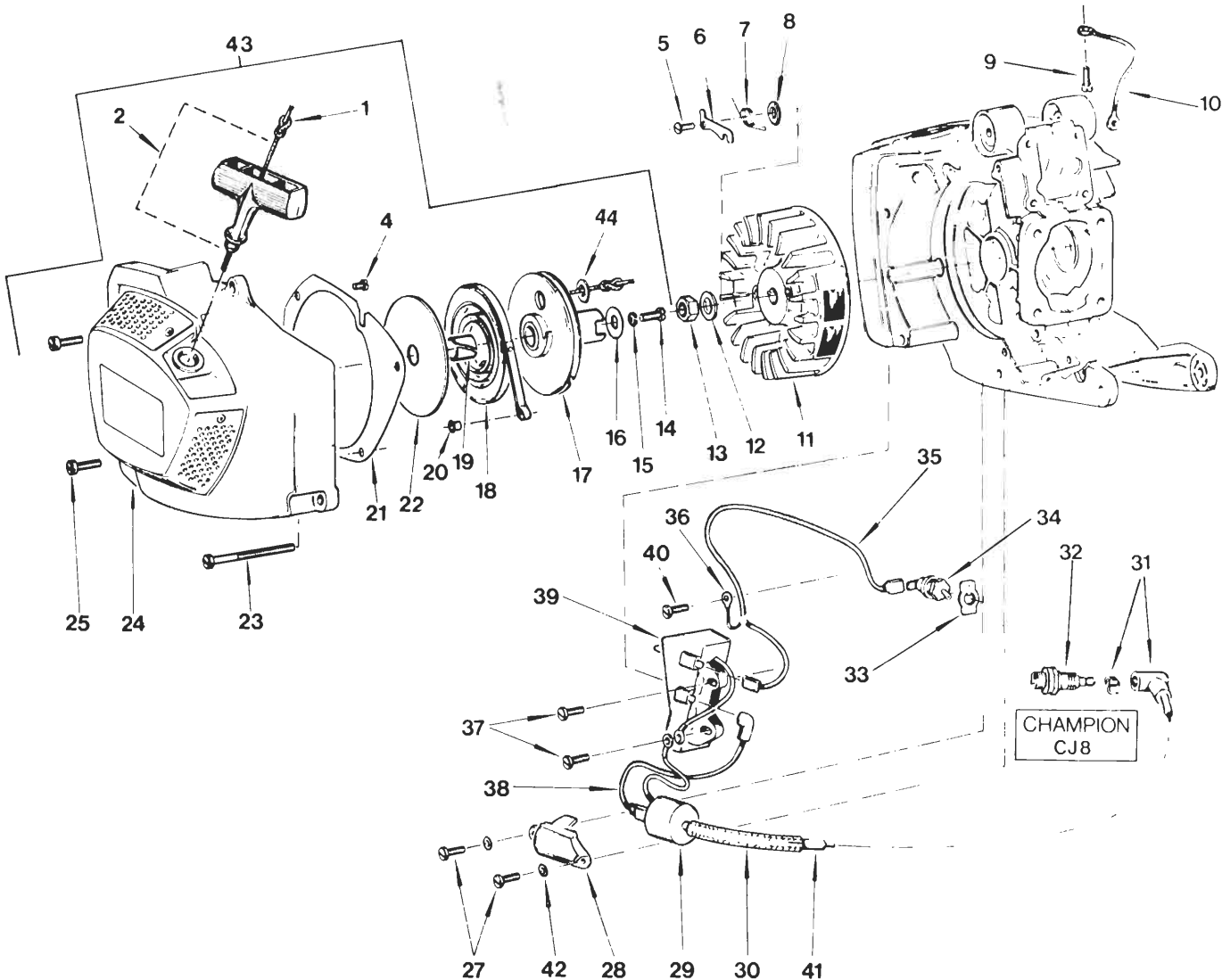
HANDLE, FRAME AND AIR FILTER

INDEX NO.	PART NO.	QTY. REQ.	DESCRIPTION	INDEX NO.	PART NO.	QTY. REQ.	DESCRIPTION
1	475370	1	Front Handle	24	431174-8	1	Top Frame
2	431684	2	Screw—Handle x 1" Long	28	430196-8	1	Bottom Frame
3	431687	2	Screw—Handle x 1½" Long	30	431374	1	Retainer
6	430197	6	Shock Mount	31	475289	1	Secondary Filter
7	430203	1	Nut—Frame	32	074027	1	¼ Mach. Screw (Incl. in Item 37)
8	431655	2	Nut—Handle	33	020741	1	¼ Dia Washer (Incl. in Item 37)
9	429776	2	Screw—Mount	35	475069	1	Filter Adaptor Ass'y (Incl. in Item 37)
10	431530	1	Screw—Cover (Incl. in 12)	36	074066	1	Spacer & Pin (Incl. in Item 37)
11	430282	1	Bumper (Incl. in 12)	37	074068	1	Cover & Adaptor Ass'y (Incl. 12, 32, 33, 35, 36)
12	475384-8	1	Top Cover Ass'y (Includes 10, 11 and 30—Incl. in item 37)	38	074008	1	Gasket for Bolt
13	431655	2	Nut—Handle	39	072025	1	Filter Element
14	429650	1	Grommet	40	074005	1	Filter Clamp Ass'y
15	430202	1	Choke Lever	41	020133	1	¼-20 Hex Nut
16	431705	2	Screw—Grip x ¾" Long	42	074077	1	Cover
17	430887	1	Screw—Frame	44	030393	1	1½ Dia. Washer
18	430840	1	Safety Trigger	45	070270	1	Knob
19	473935	1	Lower Grip	46	079097	1	Decal Operating Instructions (Not Shown)
20	431092	2	Spring Trigger				
21	430327	1	Throttle Trigger				
22	430830	1	Throttle Link				
23	430399	1	Pin—Throttle				



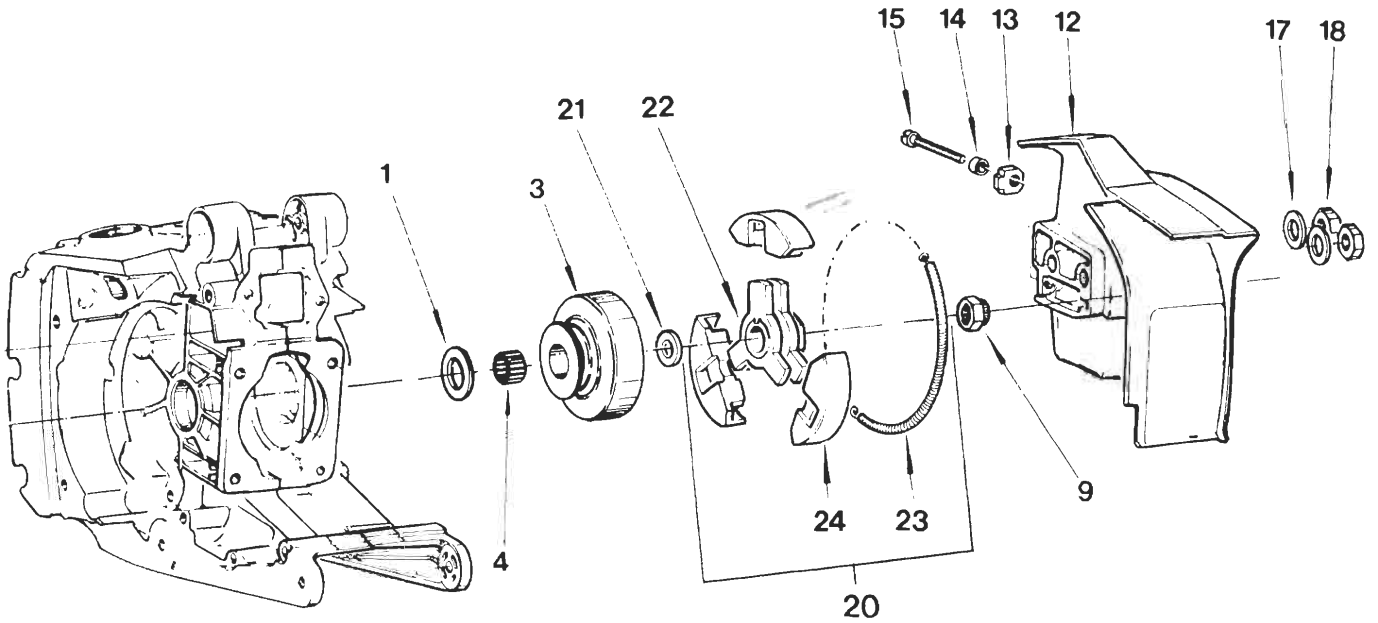
CRANKCASE AND CYLINDER

INDEX NO.	PART NO.	QTY. REQ.	DESCRIPTION	INDEX NO.	PART NO.	QTY. REQ.	DESCRIPTION
1	431696*	1	Pin-C'Case (Incl. in Item 5)	19	431655*	4	Nut
2	430197*	6	Shock Absorber	20	430184*	1	Cyl. Base Gasket
3	428746*	2	Seal	21	430924*	1	Cylinder
4	429776*	4	Screw	22	431706*	4	Washer
5	475382	1	C'Case Drive Side (Includes Item 1)	23	431691*	4	Screw, Allen Head x 1" Long
6	430190*	1	Gasket	24	431649	3	Screw x 5/8" Long
7	475190*	1	Crankshaft, with 5/16" Long Key (Includes Items 8, 9, 10 & 38)	25	431075	1	Shroud
8	431266*	2	Bearing (Incl. in Item 7)	26	430835	1	Spacer
9	431408*	1	Wrist Pin Bearing	27	474974	1	Screen, Spark Arrestor
10	429481*	1	Key, Flywheel	28	431683	1	Lock Washer
11	430925*	1	C'Case Mag. Side	29	431686	2	Lock Washer
12	431650*	9	Screw x 1 1/4" Long	30	430992	2	Bolt, Exhaust
13	431658*	1	Screw 2 1/2" Long	31	430993	1	Bolt, Exhaust
14	431690*	3	Screw 2 1/4" Long	32	474973	1	Muffler Cover
15	429548*	2	Retainer	33	430837	2	Spacer
16	429546*	1	Wrist Pin	34	475755	1	Baffle Plate
17	475189*	1	Piston	35	474587	1	Muffler Body
18	473961*	1	Ring Set	36	430684	1	Gasket
				37	431642	1	Bolt x 1"
				38	430913*	2	Thrust Washer (Incl. in 7)
				No	475436	1	Short Block Ass'y (Includes all Items Marked *)
				Number			



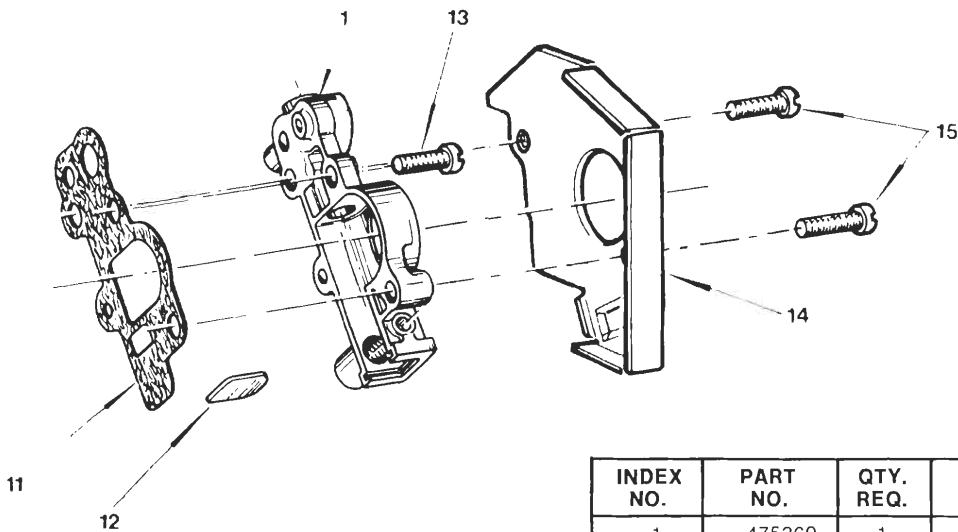
STARTER AND FLYWHEEL IGNITION

INDEX NO.	PART NO.	QTY. REQ.	DESCRIPTION	INDEX NO.	PART NO.	QTY. REQ.	DESCRIPTION
1	074112	1	Starter Rope (Includes 44) (Incl. in 43)	23	431065	1	Screw (Incl. in 43)
2	475297	1	Handle Ass'y (Incl. in 43)	24	474817	1	Starter Cover (Incl. in 43)
4	431695	4	Screw x 1/4" (Incl. in 43)	25	430887	3	Screw (Incl. in 43)
5	430877	2	Pawl Pivot	27	431689	2	Screw x 1/8"
6	430876	2	Pawl	28	431069	1	Cover
7	431416	2	Pawl Spring	29	431307	1	Transformer Coil
8	430878	2	Washer, Pawl	30	430694	1	Sleeve
9	429266	1	Screw	31	475326	1	Spark Ass'y
10	430990	1	Ground Wire	32	431614	1	Spark Plug
11	433078	1	Flywheel	33	430991	1	Switch Plate
12	429851	1	Washer	34	432742	1	Switch
13	430800	1	Nut	35	432875	1	Switch Wire
14	431694	1	Screw x 1/2" (Incl. in 43)	36	431022	1	Clip
15	431692	1	Lock Washer (Incl. in 43)	37	431642	2	Screw x 1"
16	428105	1	Washer (Incl. in 43)	38	431272	1	Coil Wire, C.D. Unit
17	475401	1	Starter Pulley (Incl. in 43)	39	432673	1	C.D. Ignition Unit
18	432503	1	Starter Spring (Incl. in 43)	40	431689	1	Screw x 1/8"
21	430915	1	Baffle, Air Deflector (Incl. in 43)	41	431316	1	High Tension Lead
22	430812	1	Fiber Washer (Incl. in 43)	42	431640	2	Washer
				43	475428	1	Starter Ass'y (Includes 1-4 and 14-25)

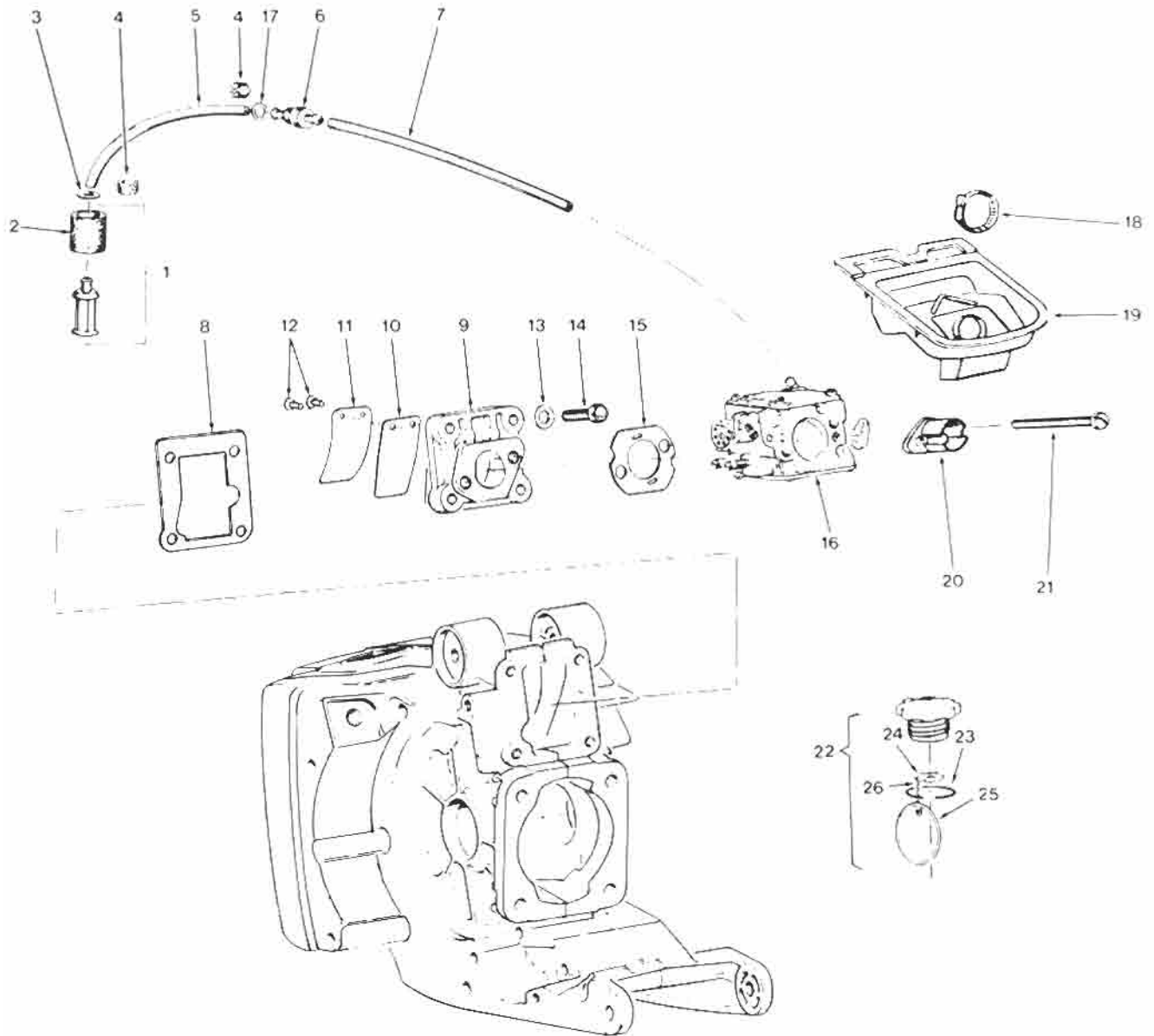


CLUTCH AND DRIVE

INDEX NO.	PART NO.	QTY. REQ.	DESCRIPTION	INDEX NO.	PART NO.	QTY. REQ.	DESCRIPTION
1	430848	1	Thrust Washer	17	430680	2	Washer
3	475360	1	Drum & Pulley (Includes #4)	18	430807	2	Nut
4	432193	1	Bearing (Incl. in Item #3)	20	475624	1	Clutch Ass'y (Incl. 22, 23 & 24)
9	430800	1	Nut	21	431447	1	Washer
12	475391	1	Clutch Cover (Incl. 13, 14, 15)	22	432740	1	Driver
13	432339	1	Pin-Adj. { (Incl. in	23	431200	1	Spring
14	429637	1	Stop-Adj. { (Incl. in	24	431195	3	Clutch Shoe { (Incl. in
15	429638	1	Screw-Adj. { (Incl. in	NOT SHOWN	074085	—	Engine Lubricant (6 Pack of 6 oz. Cans)

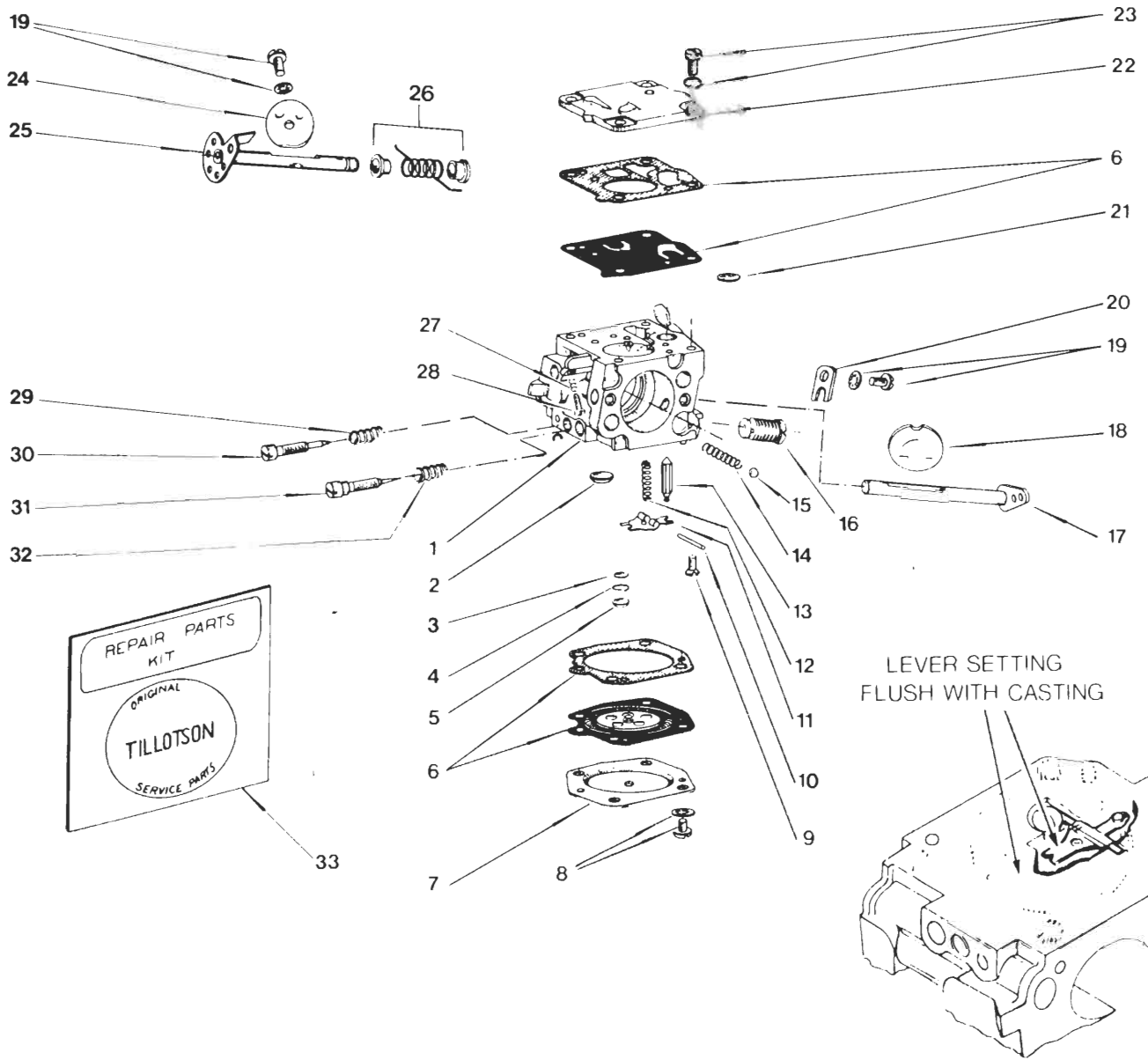


INDEX NO.	PART NO.	QTY. REQ.	DESCRIPTION
1	475369	1	Inactive Pump
11	430228	1	Gasket
12	430229	1	Dust Shield
13	431669	1	Screw - Pump 3/4" Long
14	431317	1	Dirt Shield
15	431642	2	Screw - Pump 1" Long



CARBURETOR AND FUEL PICKUP

INDEX NO.	PART NO.	QTY. REQ.	DESCRIPTION	INDEX NO.	PART NO.	QTY. REQ.	DESCRIPTION
1	475058	1	Pickup Body & Felt Ass'y (Includes 2)	14	431010	4	Screw, Reed
2	430885	1	Felt Filter (Incl. in 1)	15	427888	1	Gasket, Carb.
3	431639	1	Washer	16	475459	1	Carburetor
4	430545	2	Speed Clip	17	431271	1	Washer, Connector
5	431534	1	Pickup Hose	18	432100	1	Clamp
6	431268	1	Fuel Line Connector	19	432734	1	Intake Boot
7	431537	1	Fuel Hose	20	432911	1	Blow-back Tube
8	430191	1	Gasket, Reed Valve	21	431657	2	Screw, Carb.
9	475064	1	Reed Valve Ass'y (Incl. 10, 11, 12)	22	475167	1	Fuel Cap Ass'y (Incl. 23, 24, 25, 26)
10	428336	1	Reed (Incl. in 9)	23	429946	1	O Ring (Incl. in 22)
11	432192	1	Backing Plate (Incl. in 9)	24	427278	1	Locking Plate (Incl. in 22)
12	428335	2	Screw, Reed (Incl. in 9)	25	431368	1	Retainer (Incl. in 22)
13	431688	4	Washer	26	431370	1	Bead Chain (Incl. in 22)



CARBURETOR PARTS AND KITS

INDEX NO.	PART NO.	QTY. REQ.	DESCRIPTION	INDEX NO.	PART NO.	QTY. REQ.	DESCRIPTION
1	475459	1	Carb. Complete	19	427947*	2	Screw & Washer
2	427948*	1	Welsh Plug, Low Speed	20	427957	1	Lock Plate, Throttle
3	427942	1	Screen	21	427951	1	Fuel Screen
4	427943	1	Clip	22	427939	1	Pump Cover
5	427944*	1	Welsh Plug, High Speed	23	427955	4	Screw & Washer
6	474799*	1	Gasket & Diaphragm Set	24	430631	1	Throttle Shutter
7	427956	1	Metering Diaph. Cover	25	474564	1	Throttle Shaft
8	426145	4	Screw & Washer, Cover	26	474762*	1	Spring & Bushing, Throttle
9	427962*	1	Screw	27	430638	1	Spring, Idle
10	427954*	1	Inlet Lever Pin	28	430637	1	Screw, Idle
11	427953*	1	Inlet Lever	29	430636	1	Spring, Low Speed Adj.
12	430650*	1	Spring, Inlet Lever	30	430629	1	Low Speed Adj. Screw
13	427952	1	Inlet Needle	31	430628	1	High Speed Adj. Screw
14	425450	1	Spring, Choke	32	425449*	1	Spring, High Speed Adjust
15	428452	1	Ball, Choke				
16	475460	1	Governor (.070/20)				
17	474634	1	Choke Shaft	33	474603	1	Carb. Repair Kit — Contains All Parts Marked *
18	430630	1	Choke Shutter				