

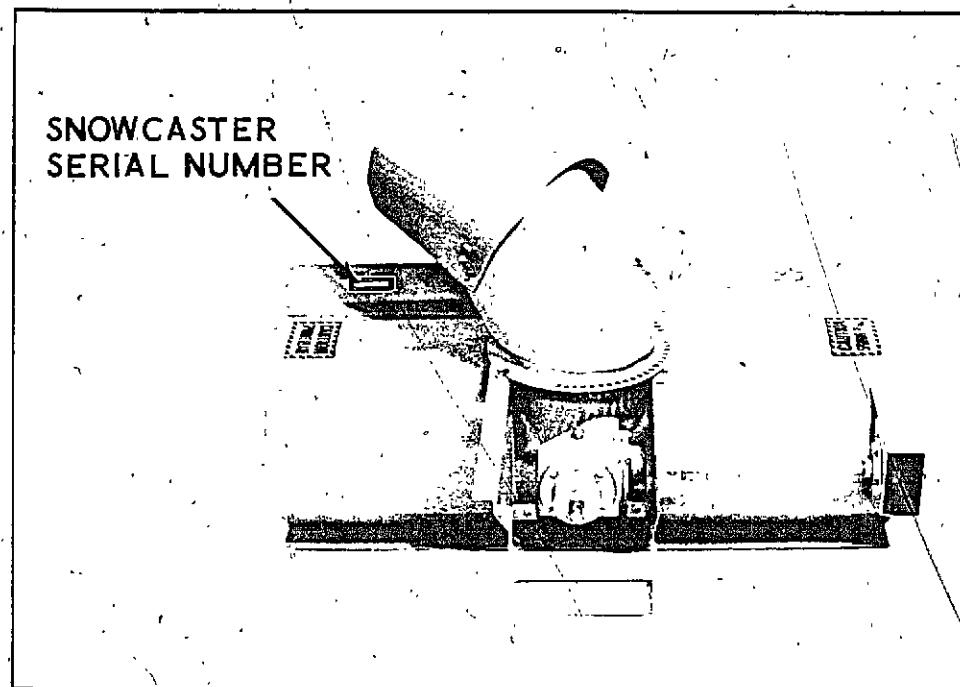
**MODEL F80, F84, E80 AND
E84 SNOWCASTERS
(SEE CHART APPLICATION BELOW)**

U.S. PRICE 75 CENTS

Parts Catalog A1128

Leitch 2500 5-75 PRINTED IN U.S.A.

NOTE: This Parts Catalog replaces the previous Issue No. 1128 which is obsolete and should be discarded.



ALPHABETICAL INDEX

	PAGE	GRID
Auger Assembly	5	A4
Lift Assembly (F80 & F84)	7	A6
Drive Assembly (F80 & F84)	9	A8
Lift Assembly (E80 & E84)	11	A10
Drive Assembly (E80 & E84)	13	A12
Drive Shaft Assembly	15	A14
Gearbox Assembly	15	A14

NOTE: See grid C2 for -
F40, F42, F44 Rotary Mowers
F50, F54 Grader Blades
E60 Dump Cart

NOTE: See grid E2 for -
F46 Rotary Mower

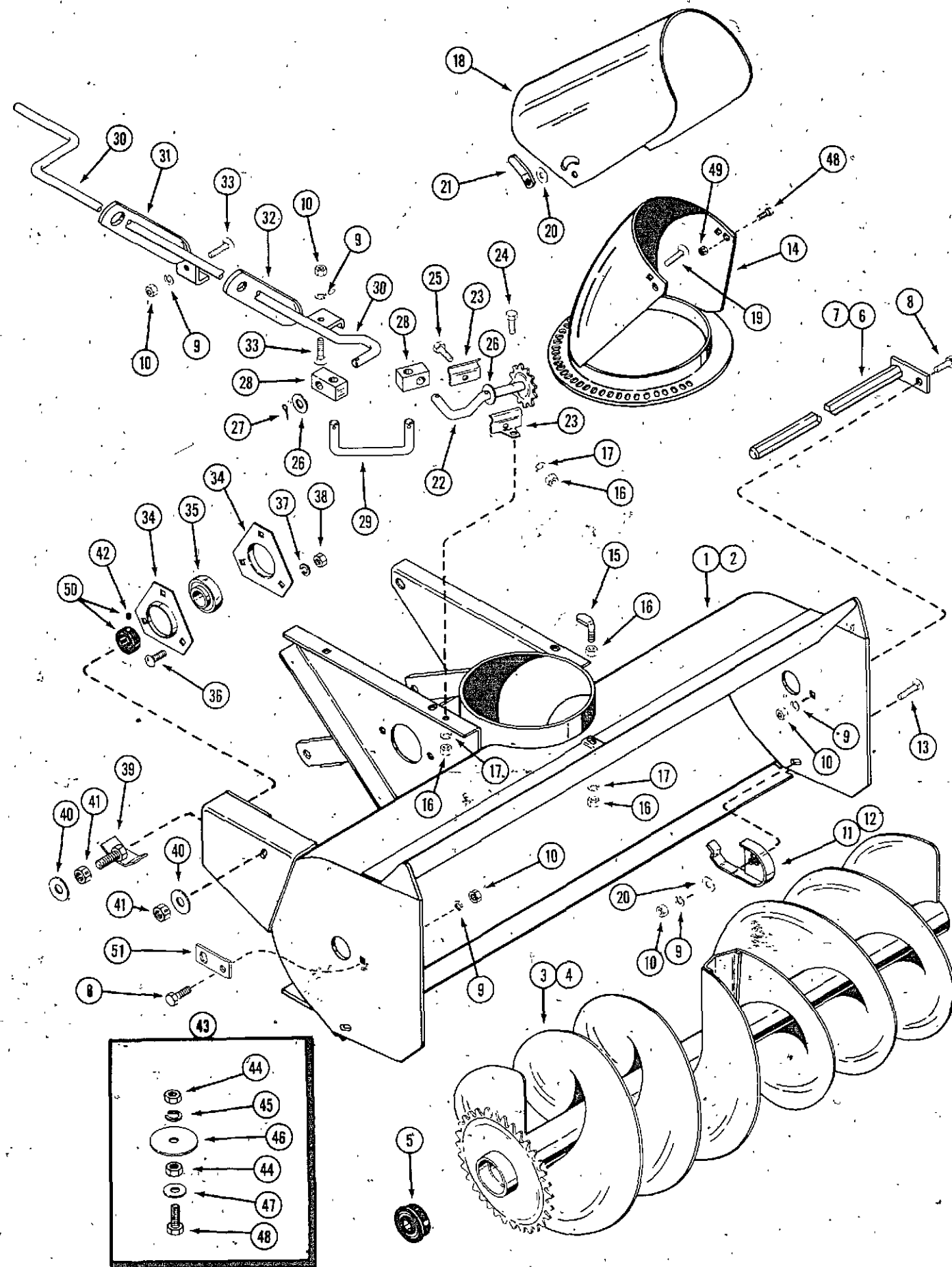
MODEL DESIGNATIONS	TRACTOR APPLICATION					
	220	222	442	444	155	195
F80, 38" SNOWCASTER	X	X	(1)	(1)		
F84, 48" SNOWCASTER	(1)	(1)	X	X		
E80, 38" SNOWCASTER					X	(1)
E84, 48" SNOWCASTER						X

(1) WILL CONVERT, BUT NOT RECOMMENDED

Serial Numbers When using this catalog, notice the reference to serial numbers of various components noted here and listed in the "description" copy. By referring to correct serial numbers, proper parts identification will be assured.

AUGER ASSEMBLY

F 80 AND F 84 CASTERS FOR 220, 222, 442 AND 444 TRACTORS
 E 80 AND E 84 CASTERS FOR 155 AND 195 COMPACT TRACTORS



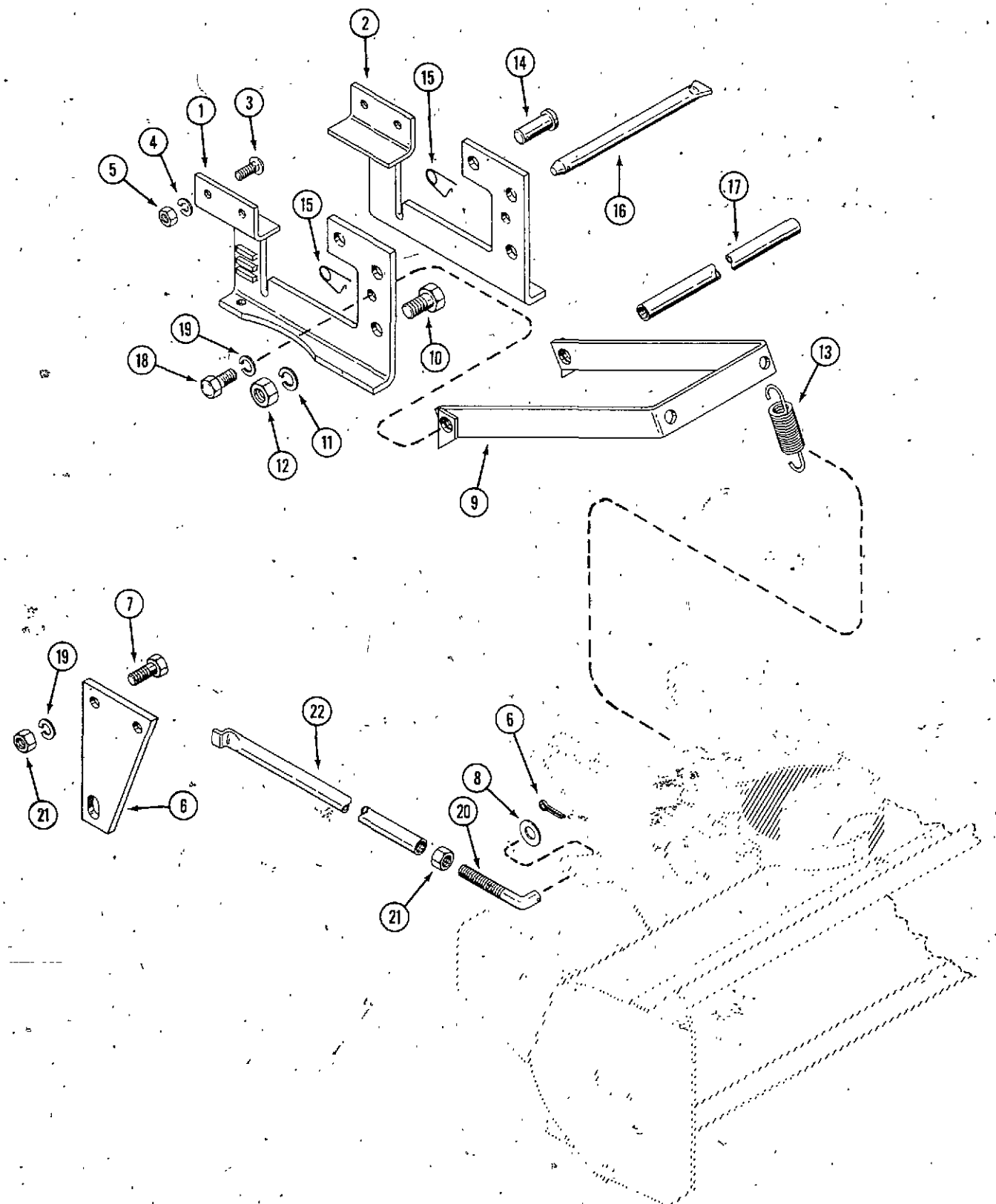
REF.	PART NO.	DESCRIPTION	REQ'D
1	C 14396	HOUSING - auger 38" F80 and E80	1
2	C 14362	HOUSING - auger 48" F84 and E84	1
3	C 14393	AUGER - 38" F80 and E80	1
4	C 14382	AUGER - 48" F84 and E84	1
5	C 14421	BEARING - auger	2
6	C 14572	SHAFT - auger mounting 38" F80 and E80	1
7	C 14573	SHAFT - auger mounting 48" F84 and E84	1
8	113- 206	BOLT - 3/8" x 3/4" NC Hex ZP (2 req'd for F80 and F84)	1
9	192- 21	LOCKWASHER - 3/8" ZP (6 req'd for F80 and F84)	5
10	129- 103	NUT - 3/8" NC Hex ZP (6 req'd for F80 and F84)	5
11	C 14387	SKID - auger housing L.H.	1
12	C 14388	SKID - auger housing R.H.	1
13	111- 302	BOLT - 3/8" x 3/4" Rd. Hd. Sq. Neck ZP	2
14	C 14416	CHUTE (also order items 48 and 49)	1
15	NSS	SCREW - chute holddown (order Kit C 15165)	2
16	129- 101	NUT - 1/4" NC Hex ZP	7
17	192- 19	LOCKWASHER - 1/4" ZP	5
18	C 14597	DEFLECTOR	1
19	111- 340	BOLT - 3/8" x 3/4" NC Rd. Hd. Sq. Neck	2
20	195- 525	WASHER - 3/8" plain ZP	6
21	C 14569	LEVER - deflector locking	2
22	C 14406	SPROCKET - discharge	1
23	C 14582	BRACKET - sprocket support	2
24	113- 2	BOLT - 1/4" x 5/8" NC Hex ZP	2
25	113- 3	BOLT - 1/4" x 3/4" NC Hex ZP	1
26	195- 525	WASHER - 3/8" plain ZP	5
27	132- 320	PIN - cotter 3/32" x 3/4"	5
28	C 14583	JOINT - block	2
29	C 14410	JOINT - link	1
30	C 14584	CRANK - discharge	1
31	C 14574	BRACKET - crank, long	1
32	C 14412	BRACKET - crank, short	1
33	111- 362	BOLT - 3/8" x NC Rd. Hd. Sq. Neck	2
34	C 14420	FLANGETTE - for bearing C21681	2
35	C 21681	BEARING	1
36	111- 202	BOLT - 5/16" x 3/4" NC Rd. Hd. Sq. Neck	3
37	192- 20	LOCKWASHER - 5/16" ZP	3
38	129- 102	NUT - 5/16" NC Hex ZP	3
39	C 14793	BRACKET - chain take up	1
40	195- 104	WASHER - 3/8" plain ZP	2
41	131- 178	NUT - lock 3/8" NC Hex	2
42	178- 819	SETSCREW - #10 x 3/16" NF	1
43	C 15165	KIT - chute hold down (used prior to F80 S/N 50701 and F84 S/N 50926)	1
*44	129- 101	NUT - 1/4" NC Hex ZP	4
*45	192- 19	LOCKWASHER - 1/4" ZP	2
*46	A 26383	WASHER - plain 9/32" x 1-1/2" O.D. ZP	2
*47	195- 518	WASHER - plain 9/32" ZP	2
*48	113- 13	BOLT - 1/4" x 3/4" NC Hex ZP	4
49	131- 1102	NUT - lock 1/4"	2
50	C 21795	COLLAR - locking (includes setscrew)	1
51	C 15414	PLATE - auger end (F80 and F84)	1
	321- 264	DECAL - "Case"	1
	C 12296	DECAL - "Caution"	2

*Used in production on Model F80 S/N 50701 and after.
 Used in production on Model F84 S/N 50926 and after.

MODEL F 80, F 84, E 80 AND E 84 SNOWCASTERS 7
LIFT ASSEMBLY

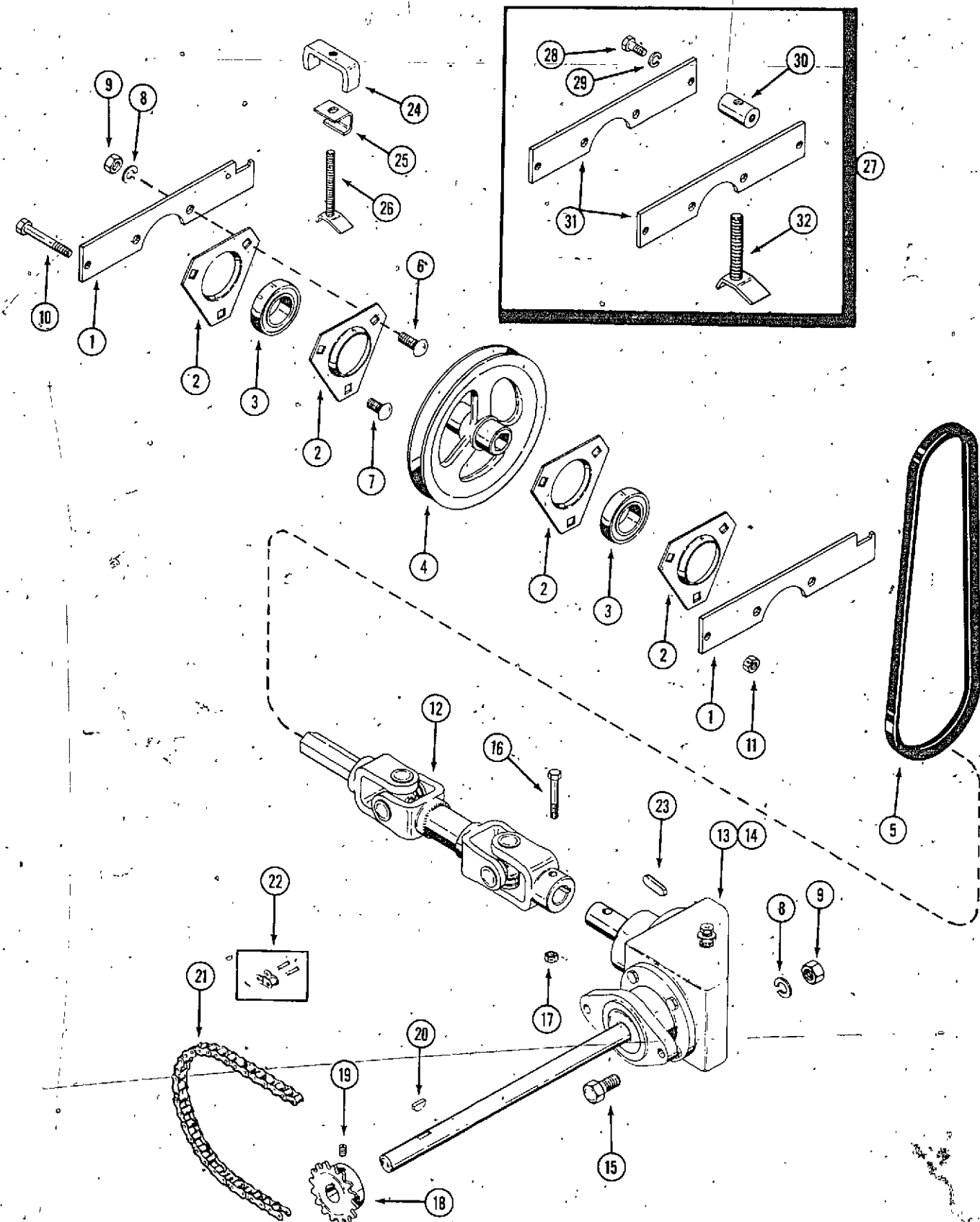
MODEL F 80 38" SNOWCASTER FOR 220 AND 222 TRACTORS
MODEL F 84 48" SNOWCASTER FOR 442 AND 444 TRACTORS

REF. PART NO.	DESCRIPTION	REQ'D
1 C 14646	BRACKET - mounting R.H.	1
2 C 14647	BRACKET - mounting L.H.	1
3 111- 362	BOLT - 3/8" x 1" NC Rd. Hd. Sq. Neck ZP	4
4 192- 21	LOCKWASHER - 3/8" ZP	4
5 129- 103	NUT - 3/8" NC Hex ZP	4
6 132- 34	PIN - cottér	2
7 113- 417	BOLT - 1/2" x 1-1/4" NC Hex ZP	4
8 195- 530	WASHER - 1/2" plain	2
9 C 14632	BRACKET - spring anchor	1
10 113- 602	BOLT - 5/8" x 1" NC Hex ZP	2
11 192- 25	LOCKWASHER - 5/8" ZP	2
12 129- 107	NUT - 5/8" NC Hex ZP	2
13 C 14482	SPRING - lift	2
14 C 12692	PIN - clevis 5/8"	2
15 C 10898	PIN - safety	3
16 C 14635	PIN - mounting	1
17 C 14363	SPACER - mounting bracket	1
18 113- 424	BOLT - 1/2" x 1" NC Hex ZP	2
19 192- 23	LOCKWASHER - 1/2" ZP	6
20 C 14413	"J" BOLT - lift rod	2
21 129- 105	NUT - 1/2" NC Hex ZP	6
22 C 14414	LIFT ROD	2
23 C 14415	LEVER - lift rod	2



DRIVE ASSEMBLY

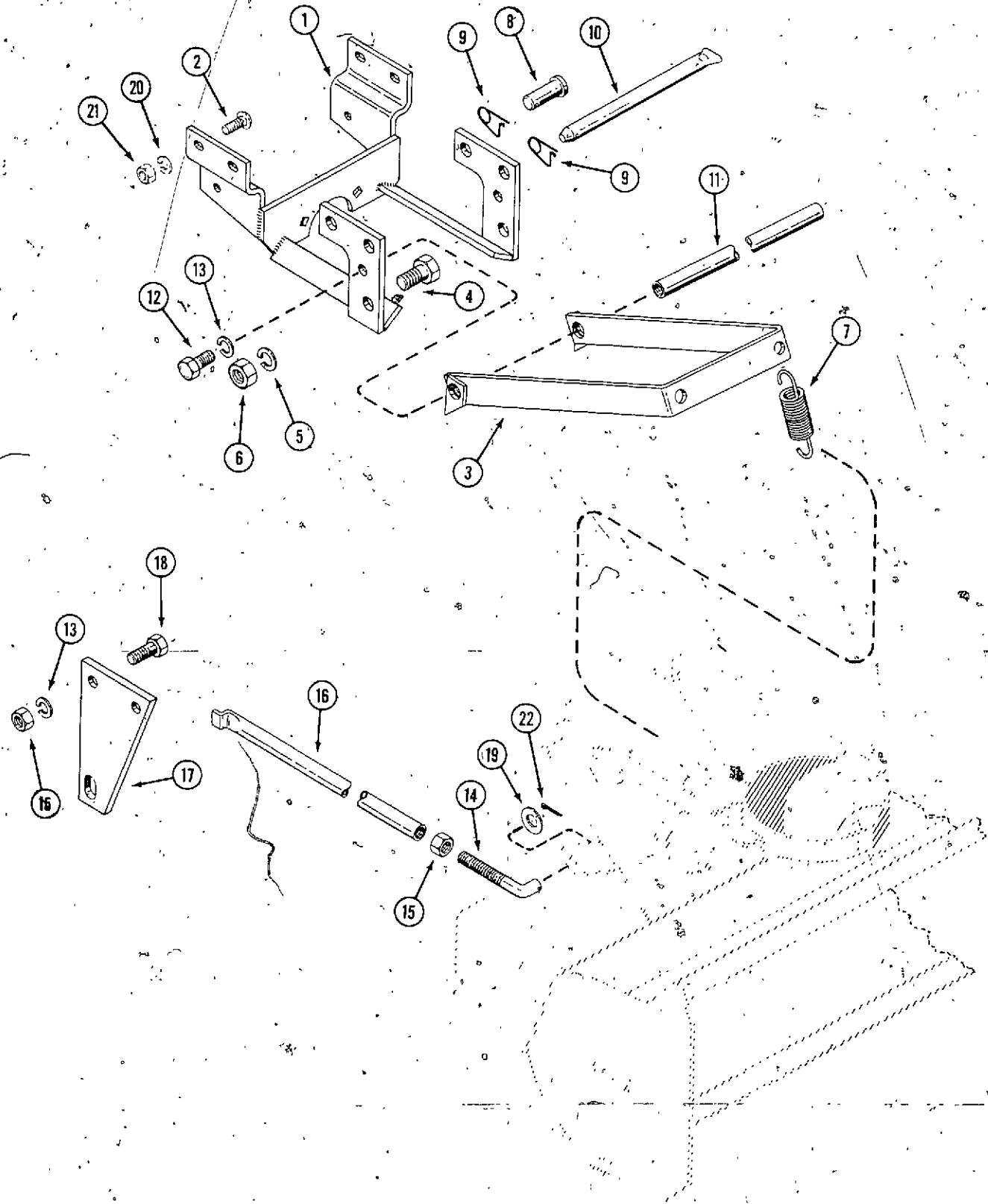
MODEL F 80 38" SNOWCASTER FOR 220 AND 222 TRACTORS
 MODEL F 84 48" SNOWCASTER FOR 442 AND 444 TRACTORS



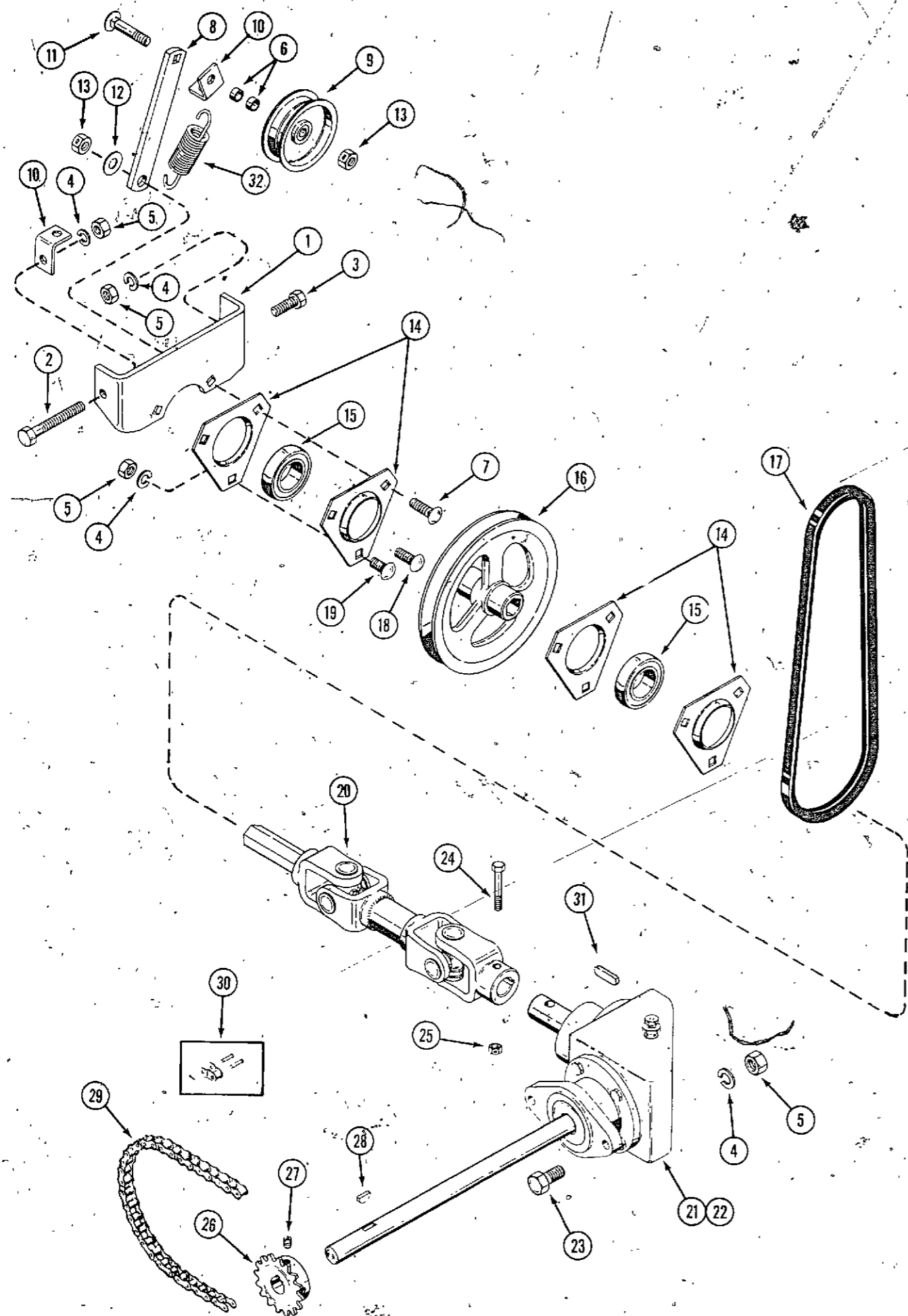
REF. PART NO.	DESCRIPTION	REQ'D
1	NSS	
2	C 14504	PLATE - bearing mounting (order item 27) 2
3	C 14505	FLANGETTE 4
4	C 14113	BEARING - pulley 2
5	C 14116	PULLEY 1
6	111- 362	BELT - PTO drive 1
7	111- 340	BOLT - 3/8" x 1" NC Rd. Hd. Sq. Neck ZP. 4
8	192- 21	BOLT - 3/8" x 3/4" NC Rd. Hd. Sq. Neck ZP 2
9	129- 103	LOCKWASHER - 3/8" ZP 8
10	113- 111	NUT - 3/8" NC Hex 9
11	131- 176	BOLT - 5/16" x 2-1/2" NC Hex ZP 1
12	C 14124	NUT - lock 5/16" NC Hex ZP 1
13	C 14424	SHAFT - drive (Repairs page 15) 1
14	C 14423	GEARBOX ASSEMBLY - F80, 38" Snowcaster (Repairs page 15) . 1
15	113- 208	GEARBOX ASSEMBLY - F84, 48" Snowcaster (Repairs page 15) . 1
16	113- 14	BOLT - 3/8" x 1-1/4" NC Hex ZP 2
17	131- 1102	BOLT - 1/4" x 2" NC Hex ZP 1
18	C 14579	NUT - lock 1/4" NC Hex ZP 1
19	83- 44	SPROCKET - drive 1
20	126- 19	SETSCREW - 1/4" x 1/4" NC cup point 2
21		KEY - #11 Woodruff 1
		CHAIN - auger drive 64 pitches #40 roller chain Use: 1
		1 - B12470 chain 50 links #40
		2 - B12473 chain 6 links each
		1 - B12501 connecting link
		1 - B12503 roller link
B 12470		CHAIN - 50 links #40 roller chain 1
B 12473		CHAIN - 6 links each #40 roller chain 2
B 12501		LINK - connecting #40 roller chain 1
B 12503		LINK - roller #40 roller chain 1
22	B 12502	LINK - offset #40 roller chain 1
23	C 14606	KEY - flat 3/16" x 1" 1
24	NSS	NUT - belt tension (order item 27) 1
25	C 14353	LOCK - belt tension 1
26	NSS	SCREW - Adjust (order item 27) 1
27	C 15558	KIT - belt tightner (for Model F80 S/N 45701 to S/N 54901 and Model F84 S/N 46002 to S/N 46257) 1
27	C 15558	KIT - belt tightner (used in production Model F80 S/N 50701 and after and Model F84 S/N 50926 and after) 1
28	113- 102	BOLT - 5/16" x 3/4" NC Hex ZP 2
29	192- 20	LOCKWASHER - 5/16" ZP 2
30	C 15264	NUT - belt tension 1
31	C 15261	PLATE - bearing 2
32	C 15262	SCREW - belt tension 1

LIFT ASSEMBLY

MODEL E 80 38" SNOWCASTER FOR 155 COMPACT TRACTOR
 MODEL E 84 48" SNOWCASTER FOR 195 COMPACT TRACTOR



REF. PART NO.	DESCRIPTION	REQ'D
1 C 14767	BRACKET - snowcaster mounting	1
2 111- 362	BOLT - 3/8" x 1" NC Rd. Hd. Sq. Neck	4
3 C 14632	BRACKET - spring anchor	1
4 113- 602	BOLT - 5/8" x 1" NC Hex ZP	2
5 192- 25	LOCKWASHER - 5/8" ZP	2
6 129- 107	NUT - 5/8" NC Hex ZP	2
7 C 14482	SPRING - lift	2
8 C 12692	PIN - clevis 5/8"	2
9 C 10898	PIN - safety	2
10 C 14635	PIN - mounting	1
11 C 14363	SPACER - mounting bracket	1
12 113- 424	BOLT - 1/2" x 1" NC Hex ZP	2
13 192- 23	LOCKWASHER - 1/2" ZP	6
14 C 14413	"J" BOLT - lift rod	2
15 129- 105	NUT - 1/2" NC Hex ZP	6
16 C 14414	LIFT ROD	2
17 C 14415	LEVER - lift rod	2
18 113- 417	BOLT - 1/2" x 1-1/4" NC Hex ZP	4
19 195- 530	WASHER - 1/2" plain	2
20 192- 21	LOCKWASHER - 3/8" ZP	4
21 129- 103	NUT - 3/8" NC Hex ZP	4
22 132- 34	PIN - cotter	2



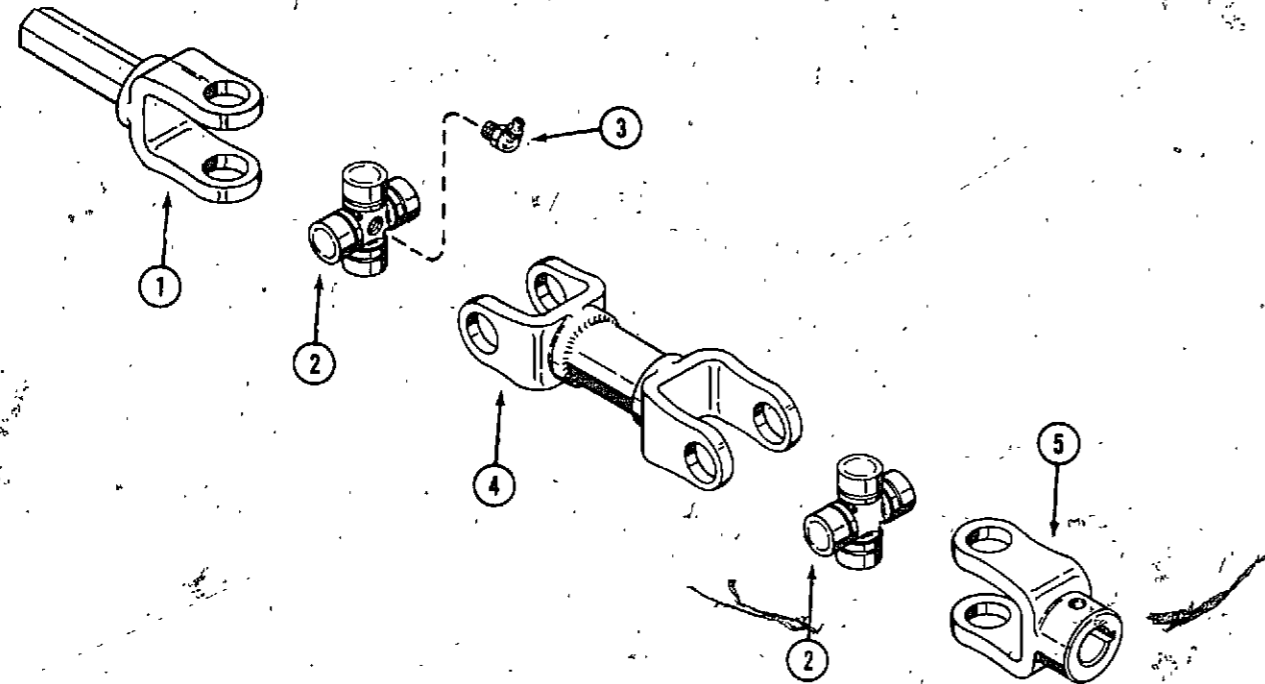
**MODEL F 80, F 84, E 80 AND E 84 SNOWCASTERS 13
DRIVE ASSEMBLY**

**MODEL E 80 38" SNOWCASTER FOR 155 COMPACT TRACTOR
MODEL E 84 48" SNOWCASTER FOR 195 COMPACT TRACTOR**

REF. PART NO.	DESCRIPTION	REQ'D
1 C 14764	BRACKET - rear bearing support	1
2 C 10967	BOLT - 3/8" x 3" NC Hex	1
3 113- 207	BOLT - 3/8" x 1" NC Hex ZP	1
4 192- 21	LOCKWASHER - 3/8" ZP	9
5 129- 103	NUT - 3/8" NC Hex	9
6 C 14768	SPACER - idler pulley	2
7 111- 366	BOLT - 3/8" x 1-1/4" NC Rd. Hd. Sq. Neck	1
8 C 14766	ARM - idler pulley	1
9 C 14770	PULLEY - idler	1
10 C 14765	ANCHOR - idler spring	7
11 111- 334	BOLT - 3/8" x 2" NC Rd. Hd. Sq. Neck	1
12 195- 524	WASHER - 3/8" plain ZP	1
13 131- 178	NUT - lock-3/8" NC Hex	2
14 C 14504	FLANGETTE	4
15 C 14505	BEARING - pulley	2
16 C 14113	PULLEY	1
17 C 14771	BELT - drive	1
18 111- 362	BOLT - 3/8" x 1" NC Rd. Hd. Sq. Neck	1
19 111- 340	BOLT - 3/8" x 3/4" NC Rd. Hd. Sq. Neck	1
20 C 14124	SHAFT - drive (Repairs page 15)	1
21 C 14424	GEARBOX ASSEMBLY - E80 (Repairs page 15)	1
22 C 14423	GEARBOX ASSEMBLY - E84 (Repairs page 15)	1
23 113- 208	BOLT - 3/8" x 1-1/4" NC Hex ZP	2
24 113- 14	BOLT - 1/4" x 2" NC Hex ZP	1
25 131- 1102	NUT - lock 1/4" NC Hex ZP	1
26 C 14579	SPROCKET - drive	1
27 83- 44	SETSCREW - 1/4" x 1/4" NC cup point	2
28 126- 19	KEY - #11 Woodruff	1
29	CHAIN - auger drive 64 pitches #40 roller chain Use:	1
	1 - B12470 chain 50 links #40	
	2 - B12473 chain 6 links each	
	1 - B12501 connecting link	
	1 - B12503 roller link	
B 12470	CHAIN - 50 links #40 roller chain	1
B 12473	CHAIN - 6 links each #40 roller chain	2
B 12501	LINK - connecting #40 roller chain	1
B 12503	LINK - roller #40 roller chain	1
30 B 12502	LINK - offset #40 roller chain	1
31 C 14606	KEY - flat 3/16" x 1"	1
32 C 14482	SPRING - idler	1

C 14124 DRIVE SHAFT ASSEMBLY

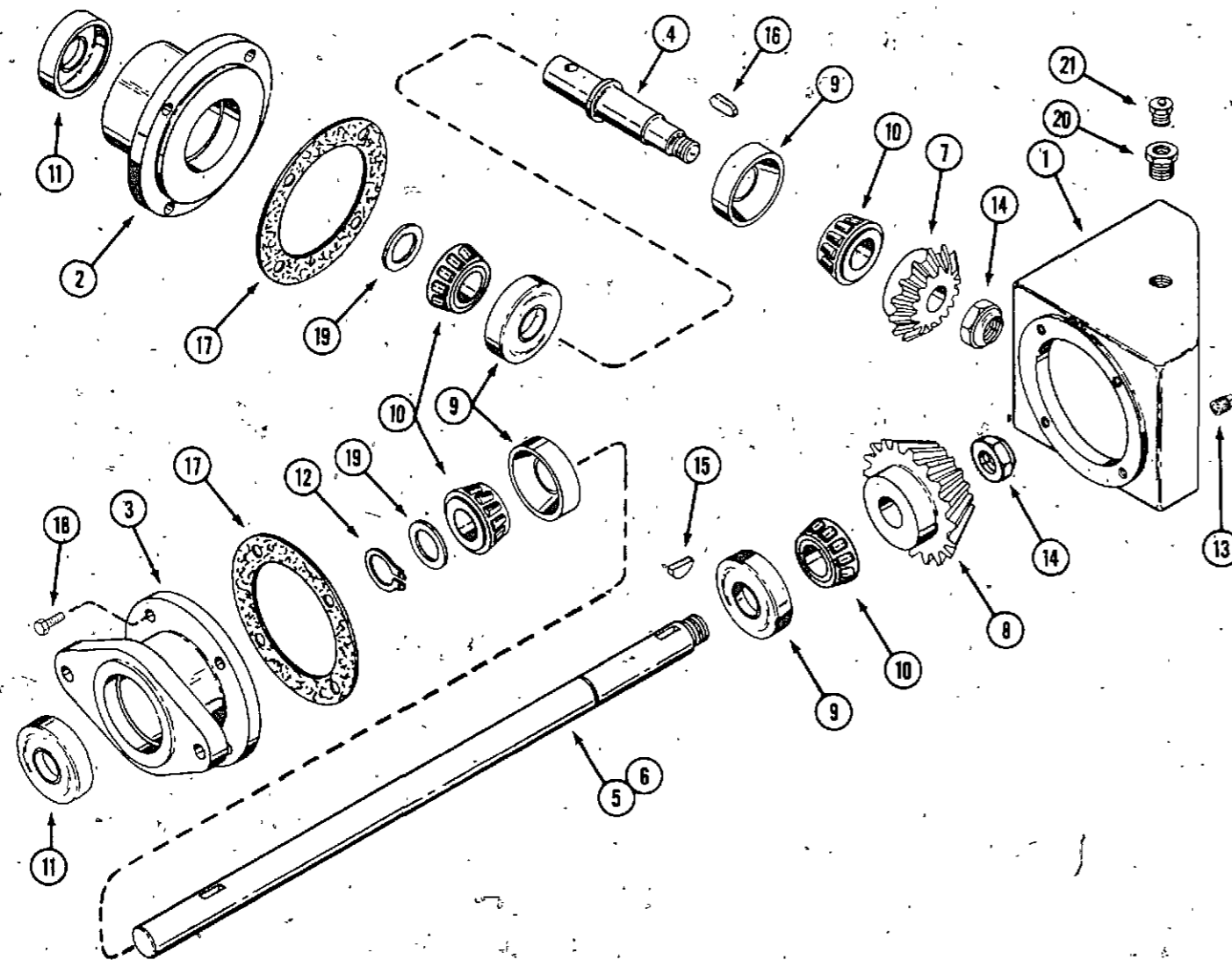
F 80 AND F 84 CASTERS FOR 220, 222, 442 AND 444 TRACTORS
E 80 AND E 84 CASTERS FOR 155 AND 195 COMPACT TRACTORS



REF. PART NO.	DESCRIPTION	REQ'D
1 C 14988	YOKE - male	1
2 C 12319	KIT - journal assembly	2
3 219- 40	FITTING - lube	2
4 C 14987	YOKE - center assembly	1
5 C 14986	YOKE - female	1

GEAR BOX ASSEMBLY

C 14423	GEARBOX - complete for Models F84 and E84 48"	1
C 14424	GEARBOX - complete for Models F80 and E80 38"	1
1 C 11850	HOUSING - gearbox	1
2 C 11851	HOUSING - input bearing	1
3 C 11852	HOUSING - output bearing	1
4 C 14605	SHAFT - input	1
5 C 14355	SHAFT - output for Models F80 and E80 38"	1
6 C 14354	SHAFT - output for Models F84 and E84 48"	1
7 C 11855	GEAR - input pinion	1
8 C 11856	GEAR - output	1
9 B 12410	CUP - bearing	4
10 B 12411	CONE - bearing	4
11 C 12079	OIL SEAL	2
12 T 25683	RING - retaining	1
13 221- 841	PLUG - housing	1
14 131- 34	NUT - gear retaining	2
15 126- 16	KEY - 3/16" x 3/4" Woodruff	1
16 C 14604	KEY - 3/16" x 3/4" flat	1
17 T 32754	GASKET	2
18 15- 412	BOLT - 1/4" x 3/4" NC Hex	8
19 C 12077	SPACER - bearing	2
20 221- 51	BUSHING - reducer 1/4" NPT to 1/8"	1
21 A 50096	VENT - pressure relief	1



NUMERICAL INDEX

NUMERICAL INDEX

PART NO.	PAGE NO.	REF. NO.	PART NO.	PAGE NO.	REF. NO.	PART NO.	PAGE NO.	REF. NO.	PART NO.	PAGE NO.	REF. NO.	PART NO.	PAGE NO.	REF. NO.	PART NO.	PAGE NO.	REF. NO.	
A	26383	9	46	C	14424	9	13	111-	340	13	19	192-	25	7	11			
A	50096	15	21	C	14424	13	21	111-	362	5	33	192-	25	11	5			
B	12410	15	9	C	14424	15		111-	362	7	3	195-	104	5	40			
B	12411	15	10	C	14482	7	13	111-	362	9	6	195-	518	9	47			
B	12470	9		C	14482	11	7	111-	362	11	2	195-	524	13	12			
B	12470	13		C	14482	12	32	111-	362	13	18	195-	525	5	20			
B	12473	9		C	14504	9	2	111-	366	13	7	195-	525	5	26			
B	12473	13		C	14504	13	14	113-	2	5	24	195-	530	7	25			
B	12501	9		C	14505	9	3	113-	3	5	25	195-	530	11	19			
B	12501	13		C	14505	13	15	113-	13	9	48	219-	40	15	3			
B	12502	9	22	C	14569	5	21	113-	14	13	24	221-	51	15	20			
B	12502	13	30	C	14572	5	6	113-	102	9	16	221-	841	15	13			
B	12503	9		C	14573	5	7	113-	111	9	10	321-	264	5				
B	12503	13		C	14574	5	31	113-	206	5	8							
C	10898	7	15	C	14579	9	18	113-	207	13	3							
C	10898	11	9	C	14579	13	26	113-	208	9	15							
C	10967	13	2	C	14582	5	23	113-	208	13	23							
C	11850	15	1	C	14583	5	28	113-	417	7	24							
C	11851	15	2	C	14584	5	30	113-	417	11	18							
C	11852	15	3	C	14596	7	8	113-	424	7	18							
C	11855	15	7	C	14597	5	18	113-	424	11	12							
C	11856	15	8	C	14604	15	16	113-	602	7	10							
C	12077	15	19	C	14605	15	4	113-	602	11	4							
C	12079	15	11	C	14606	9	23	126-	16	15	15							
C	12296	5		C	14606	13	31	126-	19	9	20							
C	12319	15	2	C	14632	7	9	126-	19	13	28							
C	12692	7	14	C	14632	11	3	129-	101	5	16							
C	12692	11	8	C	14635	7	16	129-	101	5	44							
C	14113	9	4	C	14635	11	10	129-	102	5	38							
C	14113	13	16	C	14646	7	1	129-	103	5	10							
C	14116	9	5	C	14647	7	2	129-	103	7	5							
C	14124	9	12	C	14764	13	1	129-	103	9	9							
C	14124	13	20	C	14765	13	10	129-	103	11	21							
C	14348	9	1	C	14766	13	8	129-	105	7	21							
C	14351	7	6	C	14767	11	1	129-	105	11	15							
C	14353	7	7	C	14768	13	6	129-	107	7	12							
C	14354	15	6	C	14770	13	9	131-	34	15	14							
C	14355	15	5	C	14771	13	17	131-	176	9	11							
C	14362	5	2	C	14793	5	39	131-	178	5	41							
C	14363	7	17	C	14986	15	5	131-	178	13	13							
C	14363	11	11	C	14987	15	4	131-	1102	5	49							
C	14382	5	4	C	14988	15	1	131-	1102	9	17							
C	14387	5	11	C	15165	5	43	132-	34	7	6							
C	14388	5	12	C	15261	9	31	132-	34	11	22							
C	14393	5	3	C	15262	9	32	132-	320	5	27							
C	14396	5	1	C	15264	9	30	178-	819	5	42							
C	14406	9	23	C	15414	4	51	183-	666	5	15							
C	14410	5	29	C	15558	9	27	192-	19	5	17							
C	14412	5	32	C	21681	5	35	192-	19	5	45							
C	14413	7	20	C	21795	5	50	192-	20	5	37							
C	14413	11	14	T	25683	15	12	192-	21	9	29							
C	14414	7	22	T	32754	157	17	192-	21	7	4							
C	14414	11	16					192-	21	9	8							
C	14415	7	23					192-	21	11	20							
C	14415	11	17					192-	21	13	4							
C	14416	5	14					192-	23	7	19							
C	14419	5	35					192-	23	11	13							
C	14420	5	34															
C	14421	5	5															
C	14423	9	14															
C	14423	13	22															
C	14423	15																

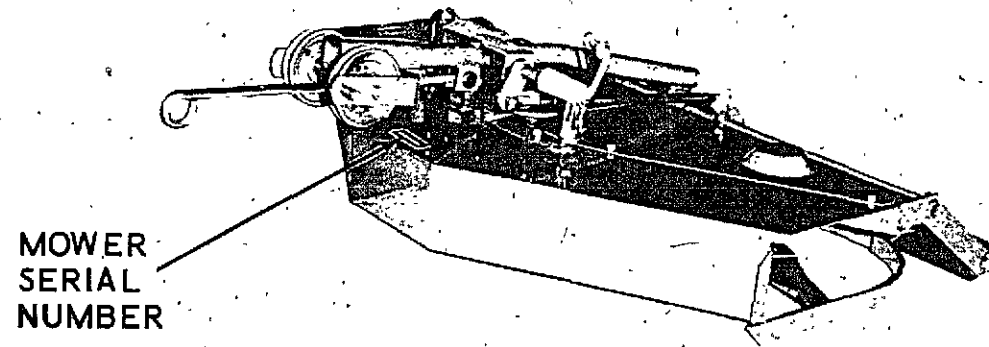
HARDWARE CODE NUMBERS

**MODELS F40, F42 AND F44 MOWERS
MODELS F50 AND F54 GRADER BLADE
MODEL E60 DUMP CART**

U.S. PRICE 75 CENTS

Parts Catalog A1131

Hi-Liter 1500 1-75



NOTE

The grader blade serial number is located on the back of the mould board. There is no serial number located on the dump cart.

MODEL DESIGNATIONS	TRACTOR APPLICATION			
	220	222	442	444
F40 ROTARY MOWER	X	X		
F42 ROTARY MOWER	X	X		
F44 ROTARY MOWER			X	X
F50 GRADER BLADE	X	X		
F54 GRADER BLADE			X	X
E60 DUMP CART	X	X	X	X

ALPHABETICAL INDEX

MOWER SECTION

	PAGE	GRID
Belts, Drive	11-15	C10-C14
Driven	11-15	C10-C14
Blades	5-9	C4-C8
Deck	11-15	C10-C14
Guards	11-15	C10-C14
Housing, Spindle	5-9	C4-C8
Pulleys, Deck	11-15	C10-C14
Pulleys, Drive Assembly	17	D2
Rod, Lift Lever	11-15	C10-C14
Spindles	5-9	C4-C8

GRADER SECTION

	PAGE	GRID
Blade	19	D4
Carriage	19	D4
Edge, Cutting	19	D4
Skids	19	D4

DUMP CART SECTION

	PAGE	GRID
Dump Cart	21	D6

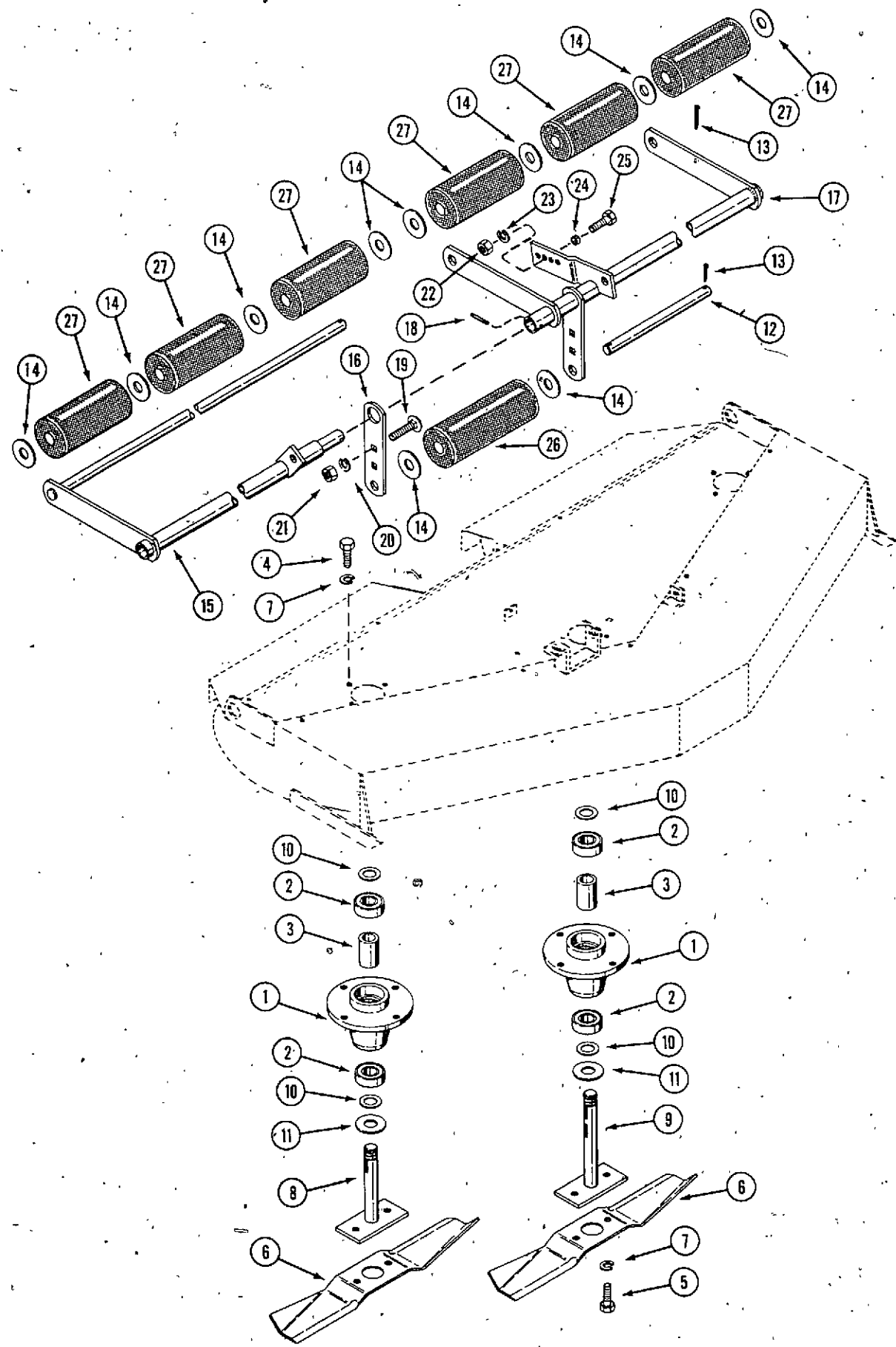
NOTE: See grid A2 for -
E80, E84, F80 and F84 Snow Casters

NOTE: See grid E2 for -
F46 Rotary Mower

Serial Numbers

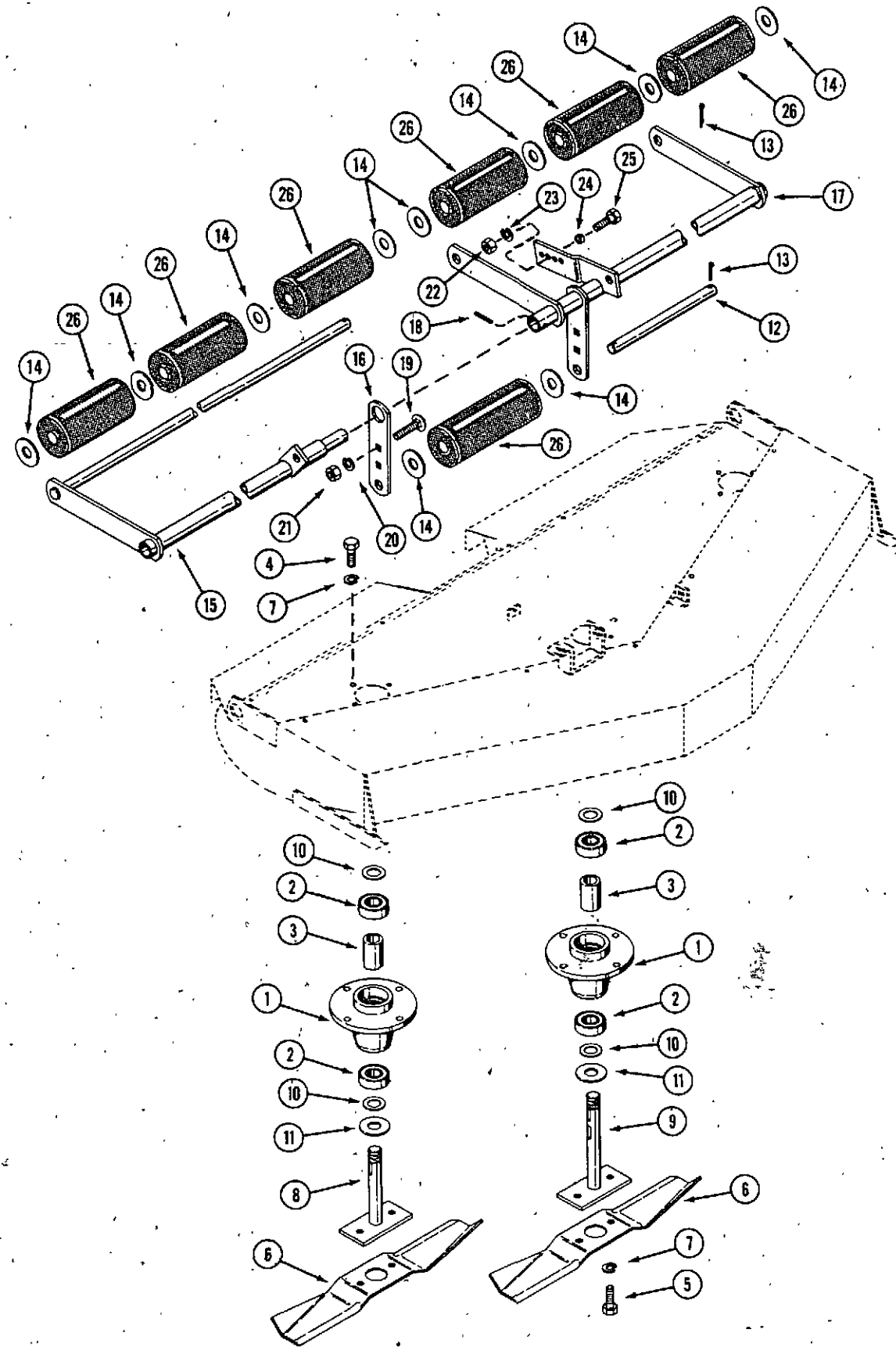
When using this catalog, notice the reference to serial numbers of various components noted here and listed in the "description" copy. By referring to correct serial numbers, proper parts identification will be assured.

**CASE ROTARY MOWER, GRADER BLADE AND DUMP CART
MODEL F 40, 38" ROTARY MOWER
220 AND 222 COMPACT TRACTORS**



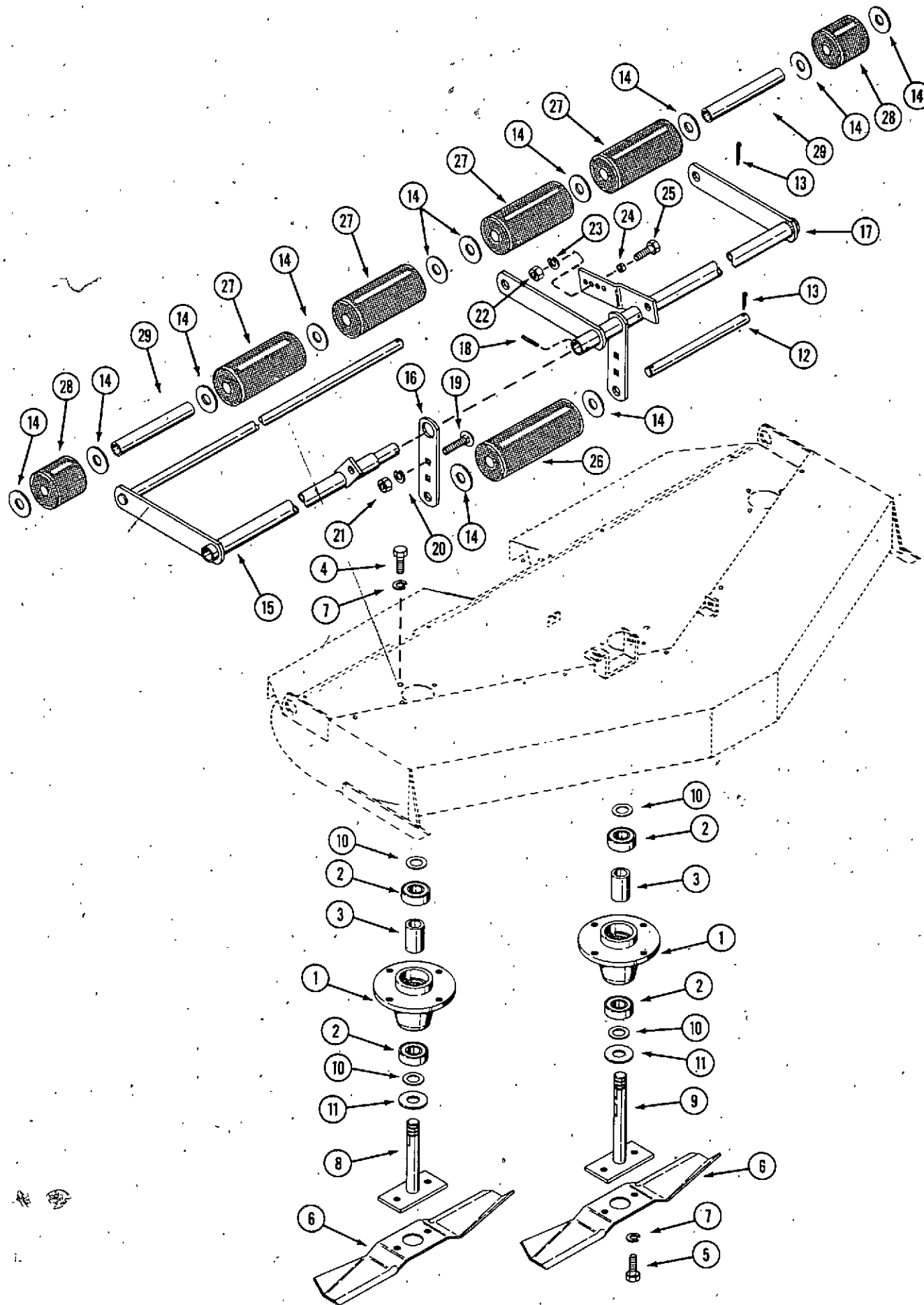
REF.	PART NO.	DESCRIPTION	REQ'D.
1	C 10807	HOUSING - mower spindle	3
2	C 10899	BEARING - spindle	6
3	C 10810	SPACER - bearing	3
4	15- 612	BOLT - 3/8" x 3/4" NC Hex	12
5	115- 206	BOLT - 3/8" x 5/8" NC Hex	6
6	C 12261	BLADE - mower 14"	3
7	92- 6	LOCKWASHER - 3/8"	18
8	C 10808	SPINDLE - outboard	2
9	C 12177	SPINDLE - center	1
10	C 10822	WASHER - mower spindle	6
11	C 10942	WASHER - bearing seal	3
12	C 13165	SHAFT - center roller	1
13	132- 310	PIN - cotter 1/8" x 1" Zinc Plated	3
14	195- 108	WASHER - plain 11/16" ID x 1-3/4" OD	10
15	C 14430	AXLE - roller R. H.	1
16	C 14359	PLATE - roller mounting	1
17	C 14429	AXLE - roller L. H.	1
18	138- 2033	PIN - roll 1/4" x 1-3/8"	1
19	111- 362	BOLT - Rd. Hd. short square neck 3/8" x 1" Zinc Plated	4
20	192- 21	LOCKWASHER - 3/8" Zinc Plated	4
21	129- 103	NUT - FHNC 3/8" Zinc Plated	4
22	129- 102	NUT - 5/16" NC Hex Zinc Plated	1
23	192- 20	LOCKWASHER - 5/16" Zinc Plated	1
24	C 14768	SPACER - stop bolt	1
25	113- 103	BOLT - 5/16" x 1" NC Hex Zinc Plated	1
26	A 70524	ROLLER - 2-1/2" diameter x 6.81 rubber	1
27	C 12518	ROLLER - 2-1/2" diameter x 5.81 rubber	6

CASE ROTARY MOWER, GRADER BLADE AND DUMP CART
MODEL F 42, 44" ROTARY MOWER
220 AND 222 COMPACT TRACTORS



REF. PART NO.	DESCRIPTION	REQ'D.
1 C 10807	HOUSING - mower spindle	3
2 C 10899	BEARING - spindle	6
3 C 10810	SPACER - bearing	3
4 15- 612	BOLT - 3/8" x 3/4" HC Hex	12
5 115- 206	BOLT - 3/8" x 5/8" NC Hex Zinc Plated	6
6 C 12262	BLADE - mower 15-1/2"	3
7 92- 6	LOCKWASHER - 3/8"	18
8 C 10808	SPINDLE - outboard	2
9 C 12177	SPINDLE - center	1
10 C 10822	WASHER - mower spindle	6
11 C 10942	WASHER - bearing seal	3
12 C 13165	SHAFT - center roller	1
13 132- 310	PIN - cotter 1/8" x 1" Zinc Plated	3
14 195- 108	WASHER - plain 11/16" ID x 1-3/4" OD	10
15 C 14375	AXLE - roller R. H.	1
16 C 14359	PLATE - roller mounting	1
17 C 14361	AXLE - roller L. H.	1
18 138- 2033	PIN - roll 1/4" x 1-3/8"	1
19 111- 362	BOLT - Rd. Hd. short square neck 3/8" x 1" Zinc Plated	4
20 192- 21	LOCKWASHER - 3/8" Zinc Plated	4
21 129- 103	NUT - 3/8" NC Hex Zinc Plated	4
22 129- 102	NUT - 5/16" NC hex Zinc Plated	1
23 192- 20	LOCKWASHER - 5/16" Zinc Plated	1
24 C 14768	SPACER - stop bolt	1
25 113- 103	BOLT - 5/16" x 1" NC Hex Zinc Plated	1
26 A 70524	ROLLER - 2-1/2" diameter x.6.81 rubber	7

CASE ROTARY MOWER, GRADER BLADE AND DUMP CART
MODEL F 44, 44" ROTARY MOWER
442 AND 444 COMPACT TRACTORS

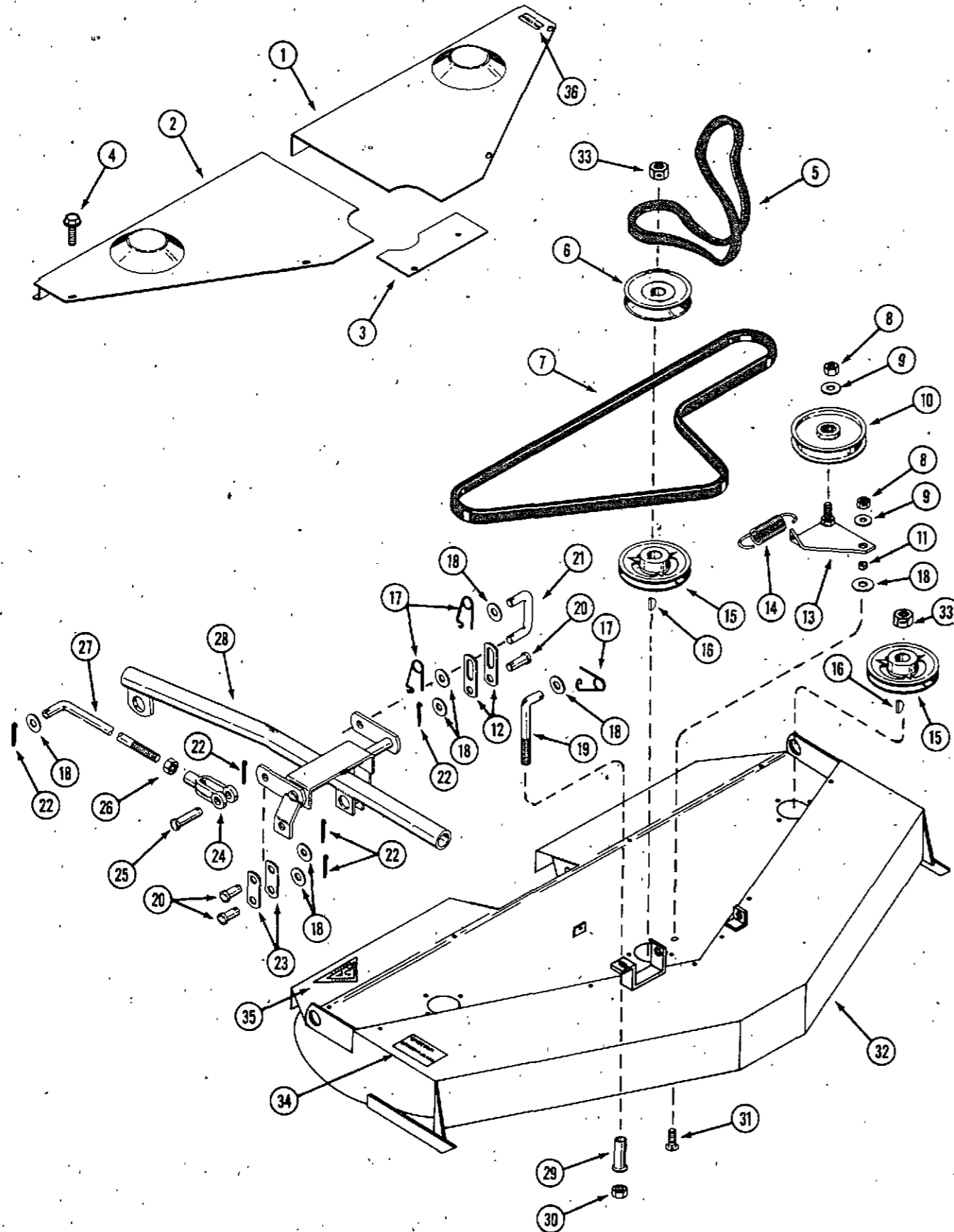


REF. PART NO.	DESCRIPTION	REQ'D
1 C 10807	HOUSING - mower spindle	3
2 C 10899	BEARING - spindle	6
3 C 10810	SPACER - bearing	3
4 15- 612	BOLT - 3/8" x 3/4" NC Hex	12
5 115- 206	BOLT - 3/8" x 5/8" NC Hex Zinc Plated	6
6 C 12262	BLADE - mower 15-1/2"	3
7 92- 6	LOCKWASHER - 3/8"	18
8 C 10808	SPINDLE - outboard	2
9 C 12177	SPINDLE - center	1
10 C 10822	WASHER - mower spindle	6
11 C 10942	WASHER - bearing seal	3
12 C 13165	SHAFT - center roller	1
13 132- 310	PIN - cotter 1/8" x 1" Zinc Plated	3
14 195- 108	WASHER - plain 11/16" ID x 1-3/4" OD	12
15 C 14375	AXLE - roller R. H.	1
16 C 14359	PLATE - roller mounting	1
17 C 14361	AXLE - roller L. H.	1
18 138- 2033	PIN - roll 1/4" x 1-3/8"	1
19 111- 362	BOLT - Rd. Hd. short square neck 3/8" x 1" Zinc Plated	4
20 192- 21	LOCKWASHER - 3/8" Zinc Plated	4
21 129- 103	NUT - 3/8" NC Hex Zinc Plated	4
22 129- 102	NUT - 5/16" NC hex Zinc Plated	1
23 192- 20	LOCKWASHER - 5/16" Zinc Plated	1
24 C 14768	SPACER - stop bolt	1
25 113- 103	BOLT - 5/16" x 1" NC Hex Zinc Plated	1
26 A 70524	ROLLER - 2-1/2" diameter x 6.81 rubber	1
27 C 12518	ROLLER - 2-1/2" diameter x 5.81 rubber	4
28 A 70514	ROLLER - 2-1/2" diameter x 2-3/8" rubber	2
29 C 14608	SPACER - rear roller	2

CASE ROTARY MOWER, GRADER BLADE AND DUMP CART

MODEL F 40, 38" ROTARY MOWER

220 AND 222 COMPACT TRACTORS

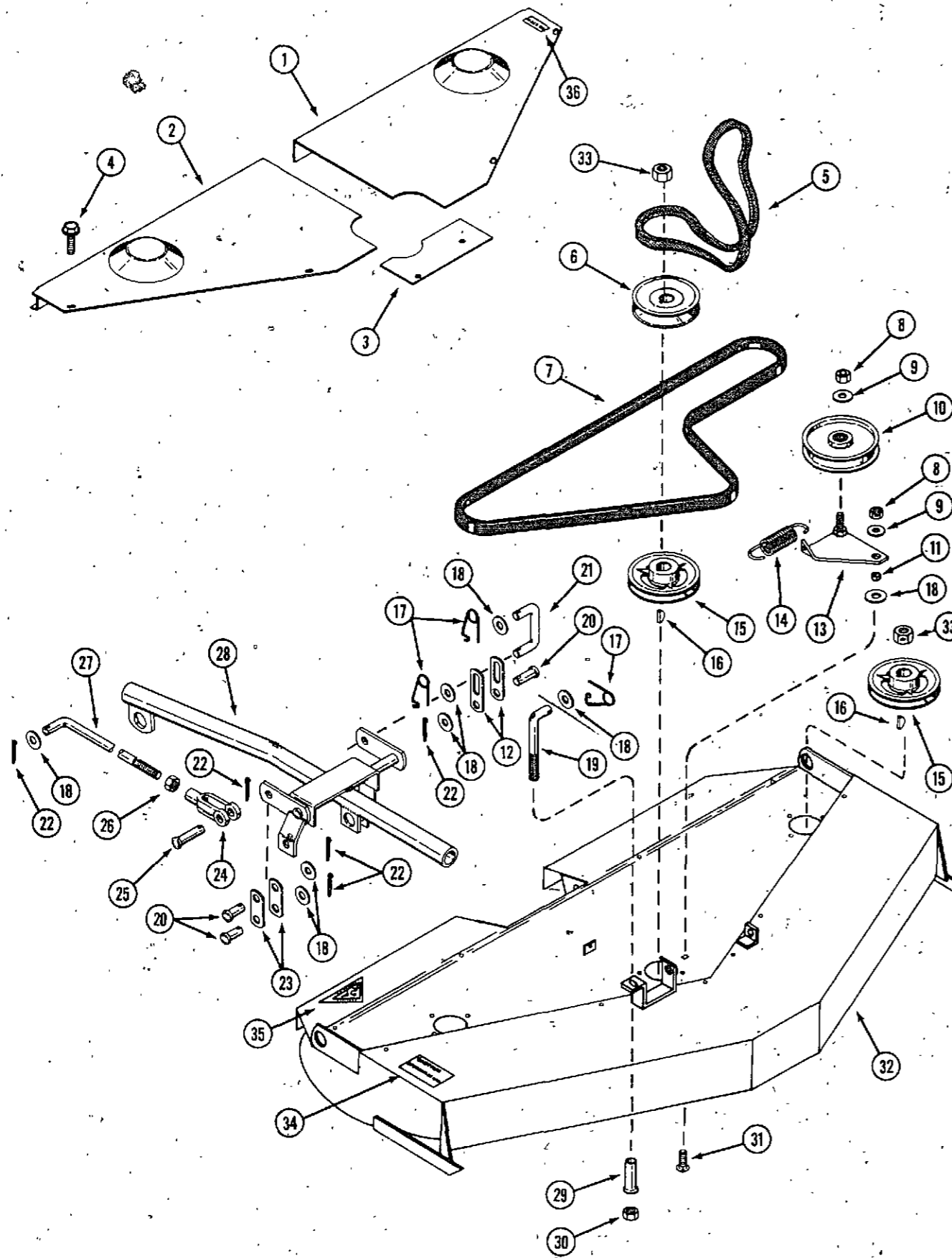


REF. PART NO.	DESCRIPTION	REQ'D.
1 C 14276	GUARD - deck belt, L.H.	1
2 C 14275	GUARD - deck belt, R.H.	1
3 C 14603	COVER - deck belt, front	1
4 187- 1036	SCREW - 1/4" x 1/2" self-tapping hex	10
5 C 14893	BELT - mower drive	1
6 C 12252	PULLEY - mower deck drive	1
7 C 12627	BELT - mower deck driven	1
8 131- 178	NUT - lock 3/8" NC hex ZP	2
9 195- 522	WASHER - plain 3/8" ZP	2
10 C 12251	PULLEY - deck idler	1
11 C 14768	SPACER - idler bracket	1
12 C 12267	LINK - bottom lift L.H.	2
13 C 14731	BRACKET - deck idler	1
14 C 14482	SPRING - deck idler	1
15 C 12253	PULLEY - mower deck	3
16 126- 19	KEY - Woodruff #11	4
17 C 10898	PIN - safety	3
18 195- 530	WASHER - plain 1/2" ZP	8
19 C 14630	ROD - lift adjust	1
20 C 14265	PIN - clevis 1/2"	3
21 C 14631	ROD - lift	1
22 132- 310	PIN - cotter 1/8" x 1" ZP	7
23 C 14602	LINK - center lift	2
24 C 10952	CLEVIS - 1/2"	2
25 141- 56	PIN - clevis 1/2" ZP	2
26 129- 105	NUT - 1/2" NC hex ZP	2
27 C 11985	ROD - pull	2
28 C 14235	FRAME - mower lift	1
29 C 12571	SLEEVE - lift rod	1
30 131- 165	NUT - lock 1/2" NC hex ZP	1
31 111- 317	BOLT - 3/8" x 1" Rd. Hd. Sq. Neck ZP	1
32 C 14239	DECK - rotary mower 38"	1
33 131- 172	NUT - lock 3/4" NF hex ZP	3
34 A 70404	DECAL - "CAUTION SPINNING BLADE"	2
35 C 12664	DECAL - "ASA" Safety	2
36 C 12519	DECAL - "NO STEP"	2

CASE ROTARY MOWER, GRADER BLADE AND DUMP CART

MODEL F 42, 44" ROTARY MOWER

220 AND 222 COMPACT TRACTORS

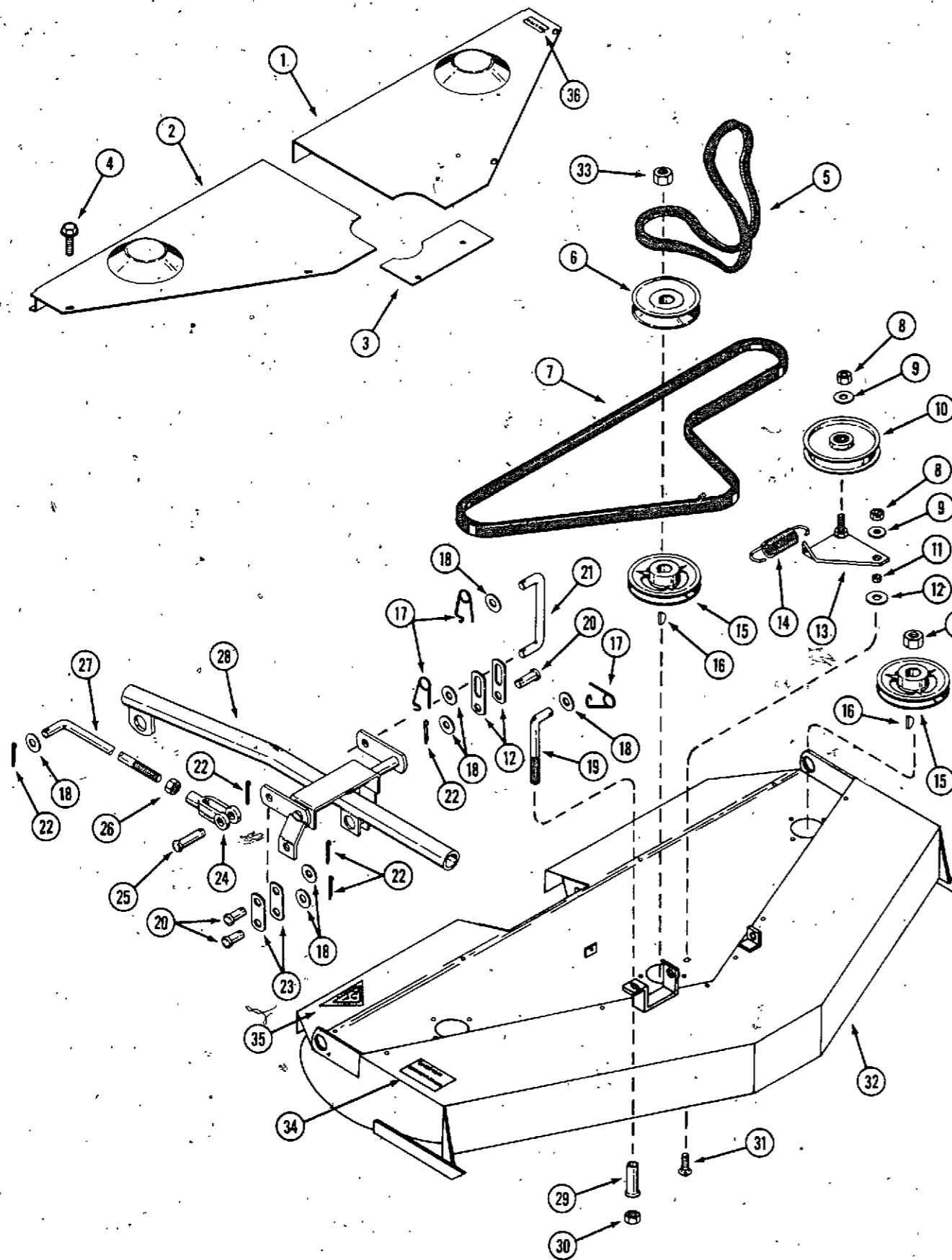


REF. PART NO.	DESCRIPTION	REQ'D.
1 C 14272	GUARD - deck belt, L.H.	1
2 C 14273	GUARD - deck belt, R.H.	1
3 C 14603	COVER - deck belt, front	1
4 187- 1036	SCREW - 1/4" x 1/2" self-tapping hex	10
5 C 14893	BELT - mower drive	1
6 C 12252	PULLEY - mower deck drive	1
7 C 10919	BELT - mower deck driven	1
8 131- 178	NUT - lock 3/8" NC hex ZP	2
9 195- 522	WASHER - plain 3/8" ZP	2
10 C 12251	PULLEY - deck idler	1
11 C 14768	SPACER - idler bracket	1
12 C 12267	LINK - bottom lift L.H.	2
13 C 14731	BRACKET - deck idler	1
14 C 14482	SPRING - deck idler	1
15 C 12253	PULLEY - mower deck	3
16 126- 19	KEY - Woodruff #11	4
17 C 10898	PIN - safety	3
18 195- 530	WASHER - plain 1/2"-ZP	8
19 C 14630	ROD - lift adjust	1
20 C 14265	PIN - clevis 1/2"	3
21 C 14631	ROD - lift	1
22 132- 310	PIN - cotter 1/8" x 1" ZP	7
23 C 14602	LINK - center lift	2
24 C 10952	CLEVIS - 1/2"	2
25 141- 56	PIN - clevis 1/2" ZP	2
26 129- 105	NUT - 1/2" NC hex ZP	2
27 C 11985	ROD - pull	2
28 C 14235	FRAME - mower lift	1
29 C 12571	SLEEVE - lift rod	1
30 131- 165	NUT - lock 1/2" NC hex ZP	1
31 111- 317	BOLT - 3/8" x 1" Rd. Hd. Square Neck ZP	1
32 C 14238	DECK - rotary mower 38"	1
33 131- 172	NUT - lock 3/4" NF hex ZP	3
34 A 70404	DECAL - "CAUTION SPINNING BLADE"	2
35 C 12664	DECAL - "ASA" Safety	2
36 C 12519	DECAL - "NO STEP"	2

CASE ROTARY MOWER, GRADER BLADE AND DUMP CART

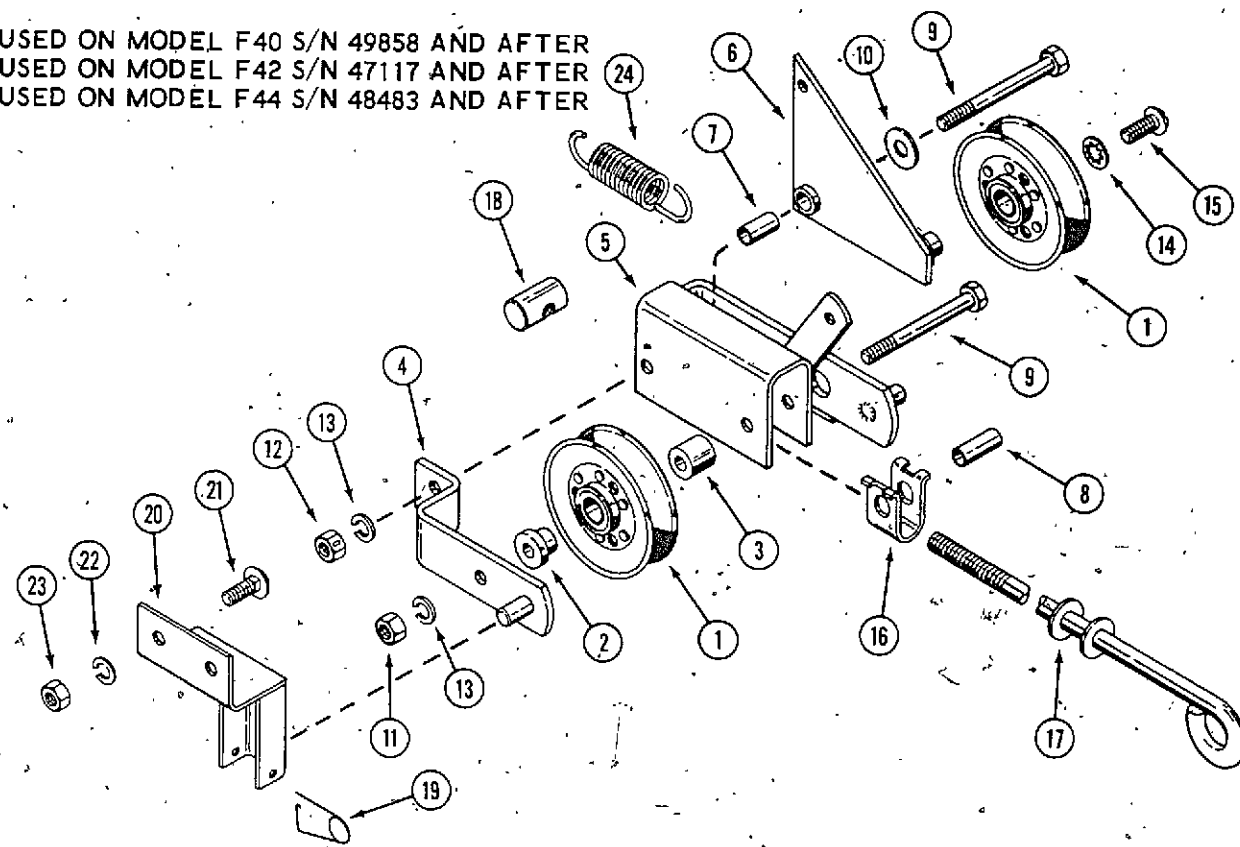
MODEL F 44, 44" ROTARY MOWER

442 AND 444 COMPACT TRACTORS

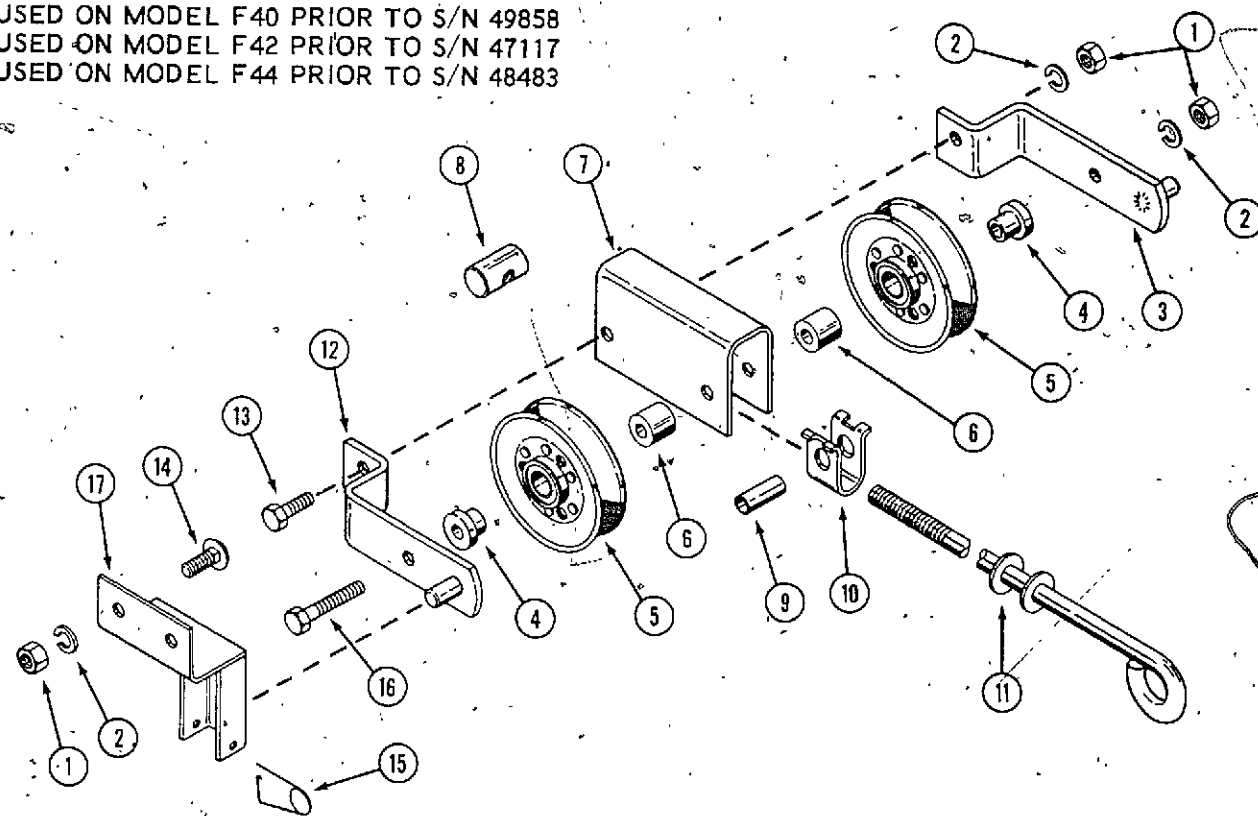


REF. PART NO.	DESCRIPTION	REQ'D.
1 C 14272	GUARD - deck belt, L.H.	1
2 C 14273	GUARD - deck belt, R.H.	1
3 C 14603	COVER - deck belt, front	1
4 187- 1036	SCREW - 1/4" x 1/2" self-tapping hex	10
5 C 14894	BELT - mower drive	1
6 C 12252	PULLEY - mower deck drive	1
7 C 10919	BELT - mower deck driven	1
8 131- 178	NUT - lock 3/8" NC hex ZP	2
9 195- 522	WASHER - plain 3/8" ZP	2
10 C 12251	PULLEY - deck idler	1
11 C 14768	SPACER - idler bracket	1
12 C 12267	LINK - bottom lift L.H.	2
13 C 14731	BRACKET - deck idler	1
14 C 14482	SPRING - deck idler	1
15 C 12253	PULLEY - mower deck	3
16 126- 19	KEY - Woodruff #11	4
17 C 10898	PIN - safety	3
18 195- 530	WASHER - plain 1/2" ZP	8
19 C 12328	ROD - lift adjust	1
20 C 14265	PIN - clevis 1/2"	3
21 C 12330	ROD - lift	1
22 132- 310	PIN - cotter 1/8" x 1" ZP	7
23 C 14602	LINK - center lift	2
24 C 10952	CLEVIS - 1/2"	2
25 141- 56	PIN - clevis 1/2" ZP	2
26 129- 105	NUT - 1/2" NC hex ZP	2
27 C 11985	ROD - pull	2
28 C 14235	FRAME - mower lift	1
29 C 12571	SLEEVE - lift rod	1
30 131- 165	NUT - lock 1/2" NC hex ZP	1
31 111- 317	BOLT - 3/8" x 1" Rd. Hd. Square Neck ZP	1
32 C 14238	DECK - rotary mower 38"	1
33 131- 172	NUT - lock 3/4" NF hex ZP	3
34 A 70404	DECAL - "CAUTION SPINNING BLADE"	2
35 C 12664	DECAL - "ASA" Safety	2
36 C 12519	DECAL - "NO STEP"	2

USED ON MODEL F40 S/N 49858 AND AFTER
 USED ON MODEL F42 S/N 47117 AND AFTER
 USED ON MODEL F44 S/N 48483 AND AFTER



USED ON MODEL F40 PRIOR TO S/N 49858
 USED ON MODEL F42 PRIOR TO S/N 47117
 USED ON MODEL F44 PRIOR TO S/N 48483



CASE ROTARY MOWER, GRADER BLADE AND DUMP CART

DRIVE ASSEMBLY

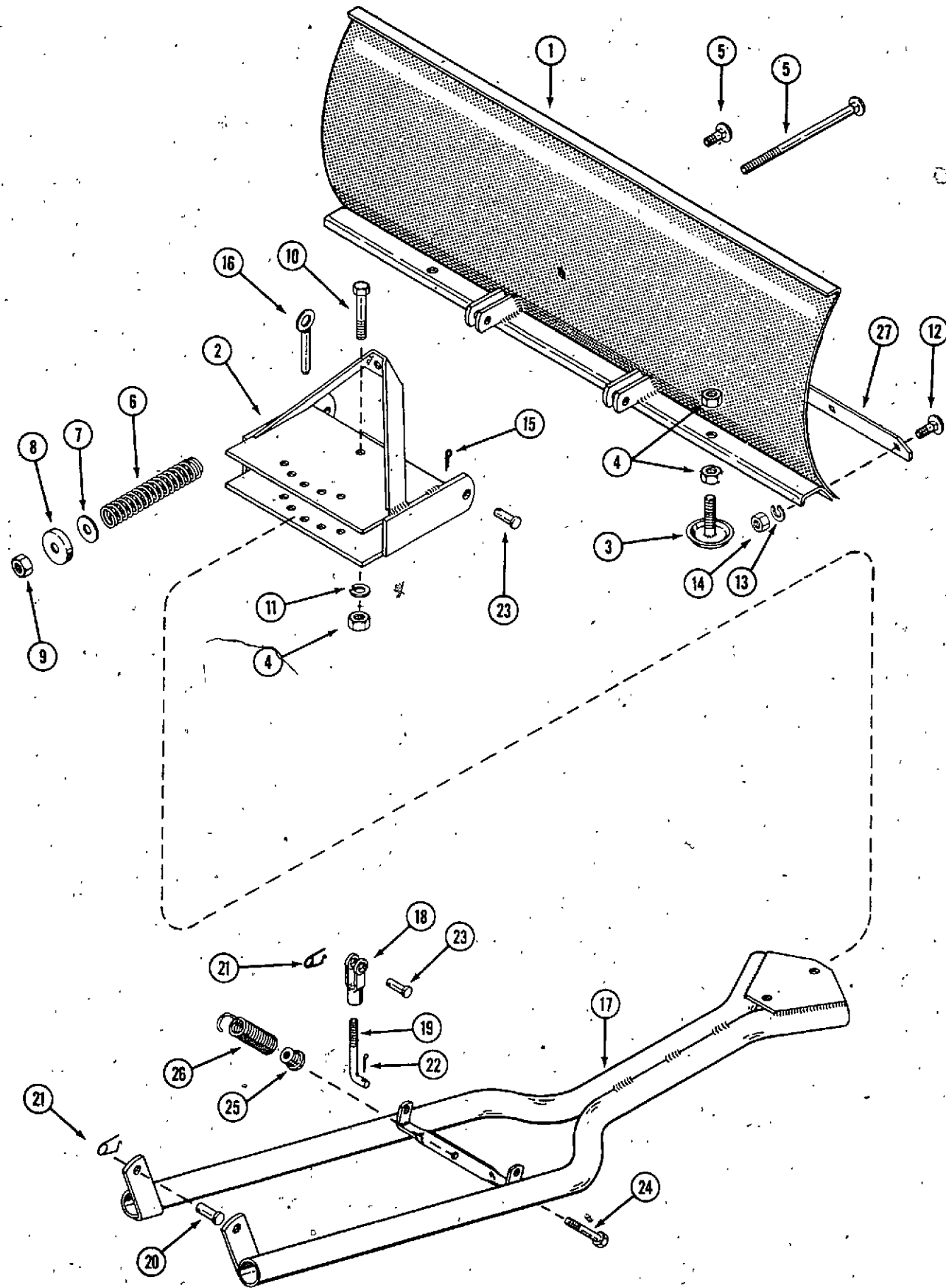
220, 222 AND 442 COMPACT TRACTORS

REF. PART NO.	DESCRIPTION	REQ'D.
1 C 10463	PULLEY - idler drive	2
2 C 12264	BUSHING - idler pulley	1
3 C 12249	SPACER - idler pulley	1
4 C 12256	BRACKET - pivot R.H.	1
5 C 14813	BRACKET ASSEMBLY	1
6 C 14811	BELLCRANK	1
7 C 14978	SPACER - bellcrank	1
8 C 12236	SPACER - idler bracket	2
9 113- 267	BOLT - 3/8" x 4" NC hex ZP	2
10 195- 522	WASHER - plain 3/8" ZP	1
11 129- 103	NUT - 3/8" NC hex ZP	1
12 131- 179	NUT - lock 3/8" NC hex	1
13 192- 21	LOCKWASHER - 3/8" ZP	2
14 193- 30	LOCKWASHER - 3/8" internal tooth	1
15 175- 420	SCREW - 3/8" x 3/4" NC truss head	1
16 C 14262	PIVOT - adjusting rod	1
17 C 14264	ROD - belt tension	1
18 C 14269	NUT - belt tension	1
19 C 10898	PIN - safety	2
20 C 14869	BRACKET - mower mounting R.H.	1
20 C 14868	BRACKET - mower mounting L.H.	1
21 111- 362	BOLT - 3/8" x 1" NC Rd. Hd. Square Neck	2
22 192- 21	LOCKWASHER - 3/8" ZP	2
23 129- 103	NUT - 3/8" NC hex ZP	2
24 C 14482	SPRING	1

DRIVE ASSEMBLY

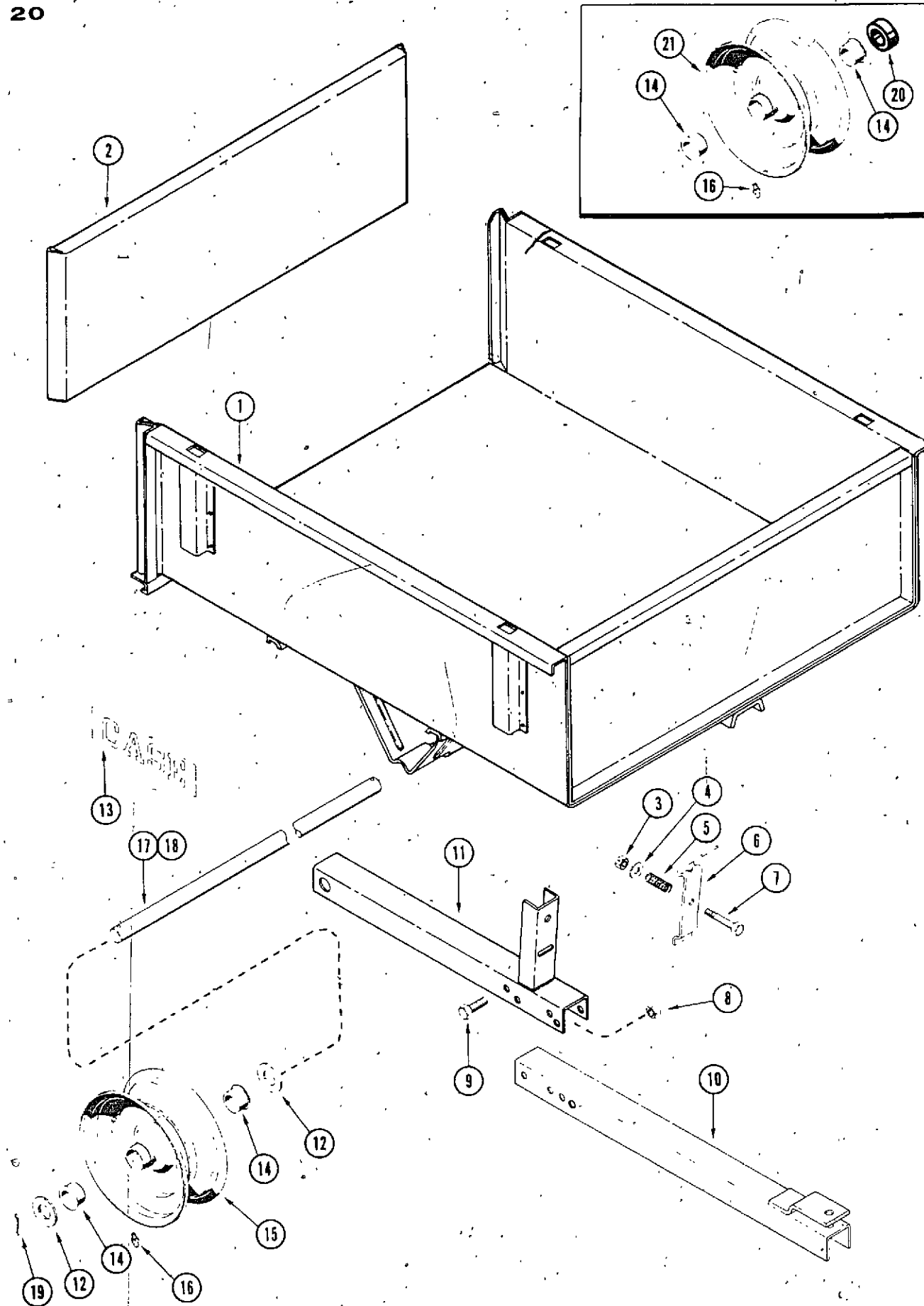
1	129- 103	NUT - 3/8" NC hex ZP	6
2	192- 21	LOCKWASHER - 3/8" ZP	6
3	C 12255	BRACKET - pivot L.H.	1
4	C 12264	BUSHING - idler pulley	2
5	C 10463	PULLEY - idler	2
6	C 12249	SPACER - idler pulley	2
7	C 14271	CLAMP - tube	1
8	C 14269	NUT - belt tension	1
9	C 12236	SPACER	2
10	C 14262	PIVOT - adjust rod	1
11	C 14264	ROD - belt tension	1
12	C 12256	BRACKET - pivot R.H.	1
13	113- 257	BOLT - 3/8" x 2-1/2" NC hex ZP	1
14	111- 362	BOLT - 3/8" x 1" Rd. Hd. Square Neck ZP	4
15	C 10898	PIN - safety	2
16	113- 258	BOLT - 3/8" x 6" NC hex ZP	1
17	C 12218	BRACKET - mounting R.H. (220 and 222)	1
17	C 12219	BRACKET - mounting L.H. (220 and 222)	1
17	C 12281	BRACKET - mounting R.H. (442)	1
17	C 12282	BRACKET - mounting L.H. (442)	1

**CASE ROTARY MOWER, GRADER BLADE AND DUMP CART
MODEL F50 AND F54 GRADER BLADE
220 222 442 AND 444 COMPACT TRACTOR**



REF. PART NO.	DESCRIPTION	REQ'D.
1 C 10870	BLADE ASSEMBLY - 44" 220 and 222	1
1 C 14442	BLADE ASSEMBLY - 54" 442 and 444	1
2 C 10873	PIVOT - blade	1
3 C 10968	SHOE - skid	1
4 25- 108	NUT - 1/2" NC Hex	2
5 C 11049	BOLT - 3/8" x 10" NC Rd. Hd. Square Neck	5
	(use with C10921 trip spring)	
5 111- 342	BOLT - 3/8" x 1" NC Rd. Hd. Square Neck	1
6 C 10921	SPRING - trip	1
7 195- 538	WASHER - 3/8" Plain	1
8 C 10896	WASHER - cup	1
9 129- 103	NUT - 3/8" NC Hex	1
10 113- 447	BOLT - 1/2" x 3-1/2" NC Hex	1
11 92- 8	LOCKWASHER - 3/8"	1
12 11- 516	BOLT - 5/16" x 1" NC Rd. Hd. Square Neck	8
13 92- 5	LOCKWASHER - 5/16"	8
14 25- 105	NUT - 5/16" NC Hex	8
15 132- 48	PIN - cotter	2
16 C 10888	PIN - locking	1
17 C 15265	FRAME - grader undercarriage, F50	1
17 C 15027	FRAME - grader undercarriage, F54	1
18 C 10952	YOKE - clevis	2
19 C 14601	ROD - front mounting adjust, F50	2
19 C 12328	ROD - front mounting adjust, F54	2
20 C 10820	PIN - clevis 5/8"	2
21 C 10898	PIN - safety	4
22 132- 26	PIN - cotter 3/32" x 3/4"	2
23 141- 56	PIN - clevis 1/2"	4
24 C 10967	BOLT - 3/8" x 3" NC Hex, F50	1
24 C 14474	BOLT - 3/8" x 5" NC Hex, F54	1
25 C 10965	PLUG - spring adjust	1
26 C 10966	SPRING - lift assist	1
27 C 10871	EDGE - cutting	1
27 C 14440	EDGE - cutting 54"	1
321- 264	DECAL - "CASE"	1

**CASE ROTARY MOWER, GRADER BLADE AND DUMP CART
MODEL E60 DUMP CART
220 222 442 AND 444 COMPACT TRACTORS**



REF. PART NO.	DESCRIPTION	REQ'D.
1 C 13788	BODY	1
2 C 13547	TAILGATE	1
3 131- 176	NUT - lock 5/16" NC Hex Zinc Plated	1
4 195- 2027	WASHER - 11/32" ID Zinc Plated	1
5 C 11942	SPRING - release	1
6 C 13859	LEVER- release	1
7 113- 111	BOLT - 5/16" x 2-1/2" NC Hex Zinc Plated	1
8 131- 178	NUT - lock 3/8" NC Hex Zinc Plated	4
9 113- 206	BOLT - 3/8" x 3/4" NC Hex Zinc Plated	1
10 C 14072	TONGUE - front	1
11 C 14073	TONGUE - rear	1
12 195- 533	WASHER - plain 1"	4
13 321- 264	DECAL	2
14 C 14221	BUSHING - flanged	2
15 A 70066	WHEEL - centered hub (used with C13920 axle)	2
16 219- 1	FITTING - lube	2
17 C 13920	SHAFT - axle 33-3/4" (used with A70066 wheel)	1
18 C 14080	SHAFT - axle 34-21/32" (used with C10531 wheel)	1
19 132- 306	PIN - cotter 3/16" x 1-3/4" Zinc Plated	2
20 C 14081	SPACER - wheel (used with C10531 wheel)	2
21 C 10531	WHEEL - offset hub (used with C14080 axle)	2

NUMERICAL INDEX

PART NO.	PAGE NO.	REF. NO.	PART NO.	PAGE NO.	REF. NO.
A 70066	21	15	C 12219	17	17
A 70404	11	34	C 12236	17	8
A 70404	13	34	C 12236	17	9
A 70404	15	34	C 12249	17	3
A 70514	9	28	C 12249	17	6
A 70524	5	26	C 12251	11	10
A 70524	7	26	C 12251	13	10
A 70524	9	26	C 12251	15	10
C 10463	17	1	C 12252	11	6
C 10463	17	5	C 12252	13	6
C 10531	21	21	C 12252	15	6
C 10807	5	1	C 12253	11	15
C 10807	7	1	C 12253	13	15
C 10807	9	1	C 12253	15	15
C 10808	5	8	C 12255	17	3
C 10808	7	8	C 12256	17	4
C 10808	9	8	C 12256	17	12
C 10810	5	3	C 12261	5	6
C 10810	7	3	C 12262	7	6
C 10810	9	3	C 12262	9	6
C 10820	19	20	C 12264	17	2
C 10822	5	10	C 12264	17	4
C 10822	7	10	C 12267	11	12
C 10822	9	10	C 12267	13	12
C 10870	19	1	C 12267	15	12
C 10871	19	27	C 12281	17	17
C 10873	19	2	C 12282	17	17
C 10888	19	16	C 12328	15	19
C 10896	19	8	C 12328	19	19
C 10898	11	17	C 12330	15	21
C 10898	13	17	C 12518	5	27
C 10898	15	17	C 12518	9	27
C 10898	17	15	C 12519	11	36
C 10898	17	19	C 12519	13	36
C 10898	19	21	C 12519	15	36
C 10899	5	2	C 12571	11	29
C 10899	7	2	C 12571	13	29
C 10899	9	2	C 12571	15	29
C 10919	13	7	C 12627	11	7
C 10919	15	7	C 12664	11	35
C 10921	19	6	C 12664	13	35
C 10942	5	11	C 12664	15	35
C 10942	7	11	C 13165	5	12
C 10942	9	11	C 13165	7	12
C 10952	11	24	C 13165	9	12
C 10952	13	24	C 13547	21	2
C 10952	15	24	C 13788	21	1
C 10952	19	18	C 13859	21	6
C 10965	19	25	C 13920	21	17
C 10966	19	26	C 14072	21	10
C 10967	19	24	C 14073	21	11
C 10968	19	3	C 14080	21	18
C 11049	19	5	C 14081	21	20
C 11942	21	5	C 14221	21	14
C 11985	11	27	C 14235	11	28
C 11985	13	27	C 14235	13	28
C 11985	15	27	C 14235	15	28
C 12177	5	9	C 14238	13	32
C 12177	7	9	C 14238	15	32
C 12177	9	9	C 14239	11	32
C 12218	17	17	C 14262	17	10

NUMERICAL INDEX

PART NO.	PAGE NO.	REF. NO.	PART NO.	PAGE NO.	REF. NO.
C 14262	17	16	C 15027	19	17
C 14264	17	11	C 15265	19	17
C 14264	17	17	HARDWARE CODE NUMBERS		
C 14265	11	20	11- 516	19	12
C 14265	13	20	15- 612	5	4
C 14265	15	20	15- 612	7	4
C 14269	17	8	15- 612	9	4
C 14269	17	18	25- 105	19	14
C 14271	17	7	25- 108	19	4
C 14272	13	1	92- 5	19	13
C 14272	15	1	92- 6	5	7
C 14273	13	2	92- 6	7	7
C 14273	15	2	92- 6	9	7
C 14275	11	2	92- 8	19	11
C 14276	11	1	111- 317	11	31
C 14359	5	16	111- 317	13	31
C 14359	7	16	111- 317	15	31
C 14359	9	16	111- 342	19	5
C 14361	7	17	111- 362	5	19
C 14361	9	17	111- 362	7	19
C 14375	7	15	111- 362	9	19
C 14375	9	15	111- 362	17	14
C 14429	5	17	111- 362	17	21
C 14430	5	15	113- 11	21	7
C 14440	19	27	113- 103	5	25
C 14442	19	1	113- 103	7	25
C 14474	19	24	113- 103	9	25
C 14482	11	14	113- 206	21	9
C 14482	13	14	113- 257	17	13
C 14482	15	14	113- 258	17	16
C 14482	17	24	113- 267	17	9
C 14601	19	19	113- 447	19	10
C 14602	11	23	115- 206	5	5
C 14602	13	23	115- 206	7	5
C 14602	15	23	115- 206	9	5
C 14603	11	3	126- 19	11	16
C 14603	13	3	126- 19	13	16
C 14603	15	3	126- 19	15	16
C 14608	9	29	129- 102	5	22
C 14630	11	19	129- 102	7	22
C 14630	13	19	129- 102	9	22
C 14631	11	21	129- 103	5	21
C 14631	13	21	129- 103	7	21
C 14731	11	13	129- 103	9	21
C 14731	13	13	129- 103	17	1
C 14731	15	13	129- 103	17	11
C 14768	5	24	129- 103	17	23
C 14768	7	24	129- 105	19	9
C 14768	9	24	129- 105	11	26
C 14768	11	11	129- 105	13	26
C 14768	13	11	129- 105	15	26
C 14768	15	11	131- 165	11	30
C 14811	17	6	131- 165	13	30
C 14813	17	5	131- 165	15	30
C 14868	17	20	131- 172	11	33
C 14869	17	20	131- 172	13	33
C 14893	11	5	131- 172	15	33
C 14893	13	5	131- 176	21	3
C 14894	15	5	131- 178	11	8
C 14978	17	7	131- 178	13	8
131- 178	15	8			
131- 178	21	8			
131- 179	17	12			
132- 26	19	22			
132- 48	19	15			
132- 306	21	19			
132- 310	5	13			
132- 310	7	13			
132- 310	9	13			
132- 310	11	22			
132- 310	13	22			
132- 310	15	22			
138- 2033	5	18			
138- 2033	7	18			
138- 2033	9	18			
141- 56	11	25			
141- 56	13	25			
141- 56	15	25			
141- 56	19	23			
175- 420	17	15			
187- 1036	11	4			
187- 1036	13	4			
187- 1036	15	4			
192- 20	5	23			
192- 20	7	23			
192- 20	9	23			
192- 21	5	20			
192- 21	7	20			
192- 21	9	20			
192- 21	17	2			
192- 21	17	13			
192- 21	17	22			
193- 30	17	14			
195- 108	5	14			
195- 108	7	14			
195- 108	9	14			
195- 522	11	9			
195- 522	13	9			
195- 522	15	9			
195- 522	17	10			
195- 530	11	18			
195- 530	13	18			
195- 530	15	18			
195- 533	21	12			
195- 538	19	7			
195- 2027	21	4			
219- 1	21	16			
321- 264	19	19			
321- 264	21	13			

INGERSOLL

Ingersoll Equipment Co., Inc.

INGERSOLL

Ingersoll Equipment Co., Inc.

INGERSOLL

Ingersoll Equipment Co., Inc.

INGERSOLL

Ingersoll Equipment Co., Inc.

INGERSOLL
Ingersoll Equipment Co., Inc.

INGERSOLL
Ingersoll Equipment Co., Inc.

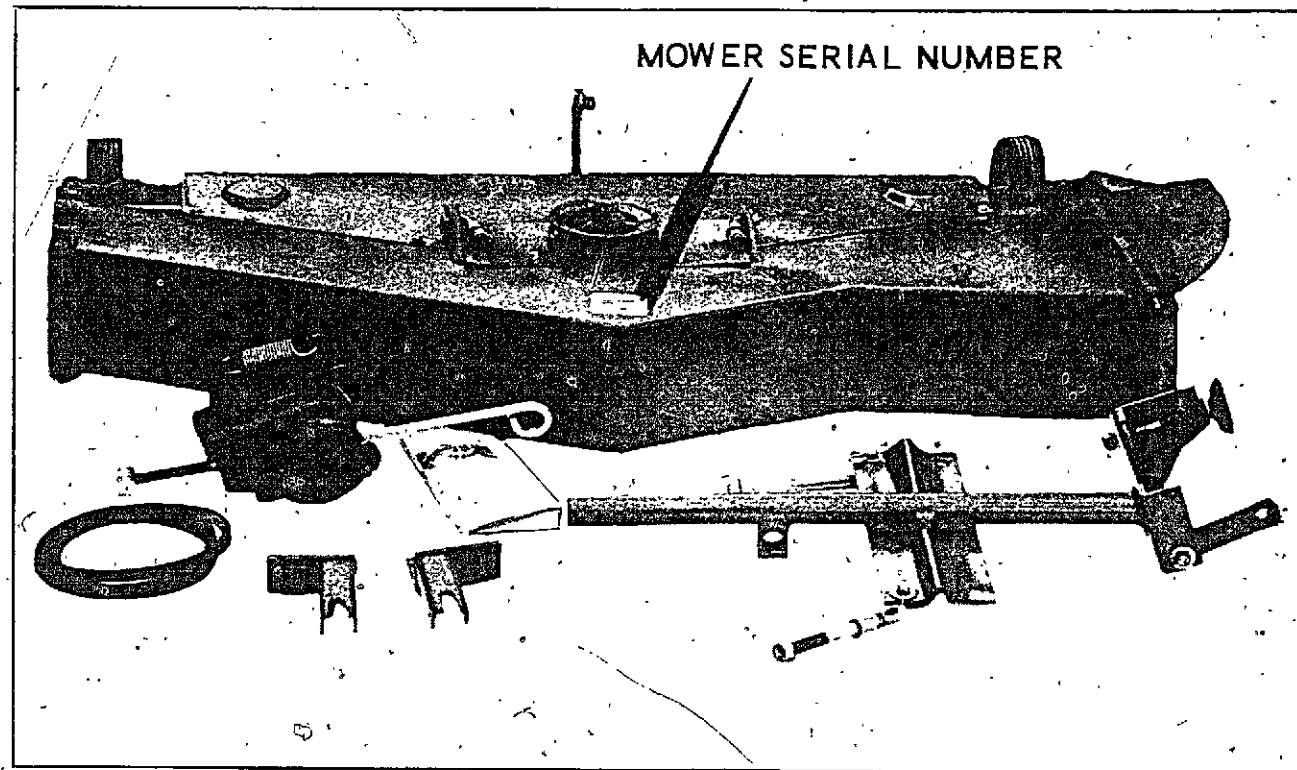
**F46 MOWER
FOR 442 AND 444
COMPACT TRACTORS**

Parts Catalog A1134

Print Shop 3000 8-76

Note: This catalog replaces the previous issue - 1134 - which is obsolete and should be discarded.

CASE MODEL F46 48" ROTARY MOWER



DESIGNATIONS	TRACTOR APPLICATION
MODEL F46 - 48" ROTARY MOWER	MODELS 442 AND 444

ALPHABETICAL INDEX

	PAGE	GRID
Axle	9	E8
Belts, Drive	5	E4
Belts, Driven	5	E4
Blades	7	E6
Deck	5	E4
Drive Assembly	9	E8
Guards	7	E6
Housing, Spindle	7	E6
Lift Assesmbly	9	E8
Pulleys	5	E4
Rear Wheels	9	E8
Rod, Lift Adjusting	9	E8
Spindles	7	E6

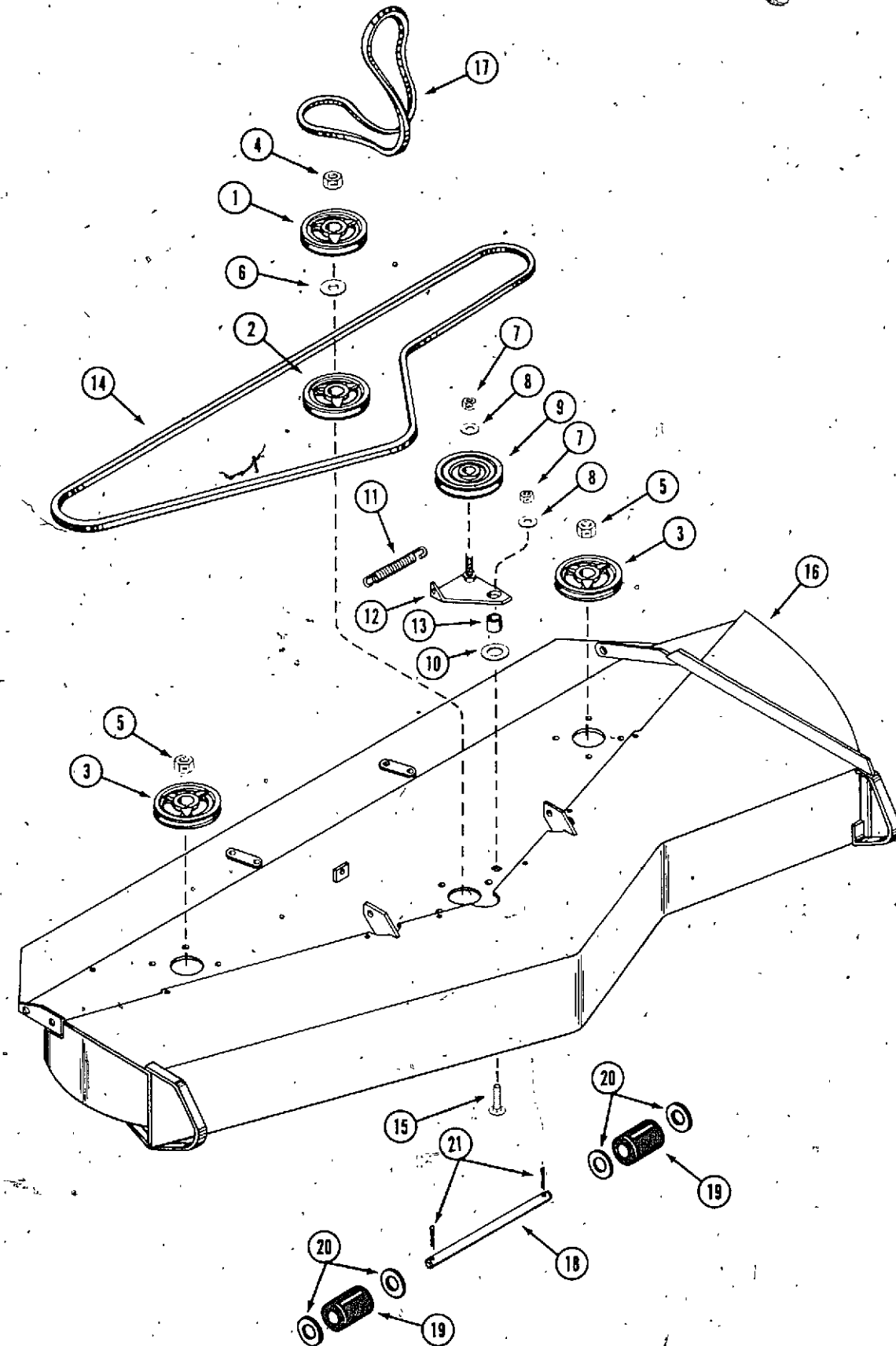
NOTE: See grid A2 for -
E80, E84, F80, F84 Snowcasters

NOTE: See grid C2 for -
F40, F42, F44 Rotary Mowers
F50, F54 Grader Blades
E60 Dump Cart

SERIAL NUMBERS

When using this catalog, please be advised that serial numbers of various components may be used interchangeably. By referring to the serial number of the part, the correct part will be ascertained.

CASE MODEL F46 48" ROTARY MOWER
DECK, PULLEYS AND BELTS
442 AND 444 COMPACT TRACTORS

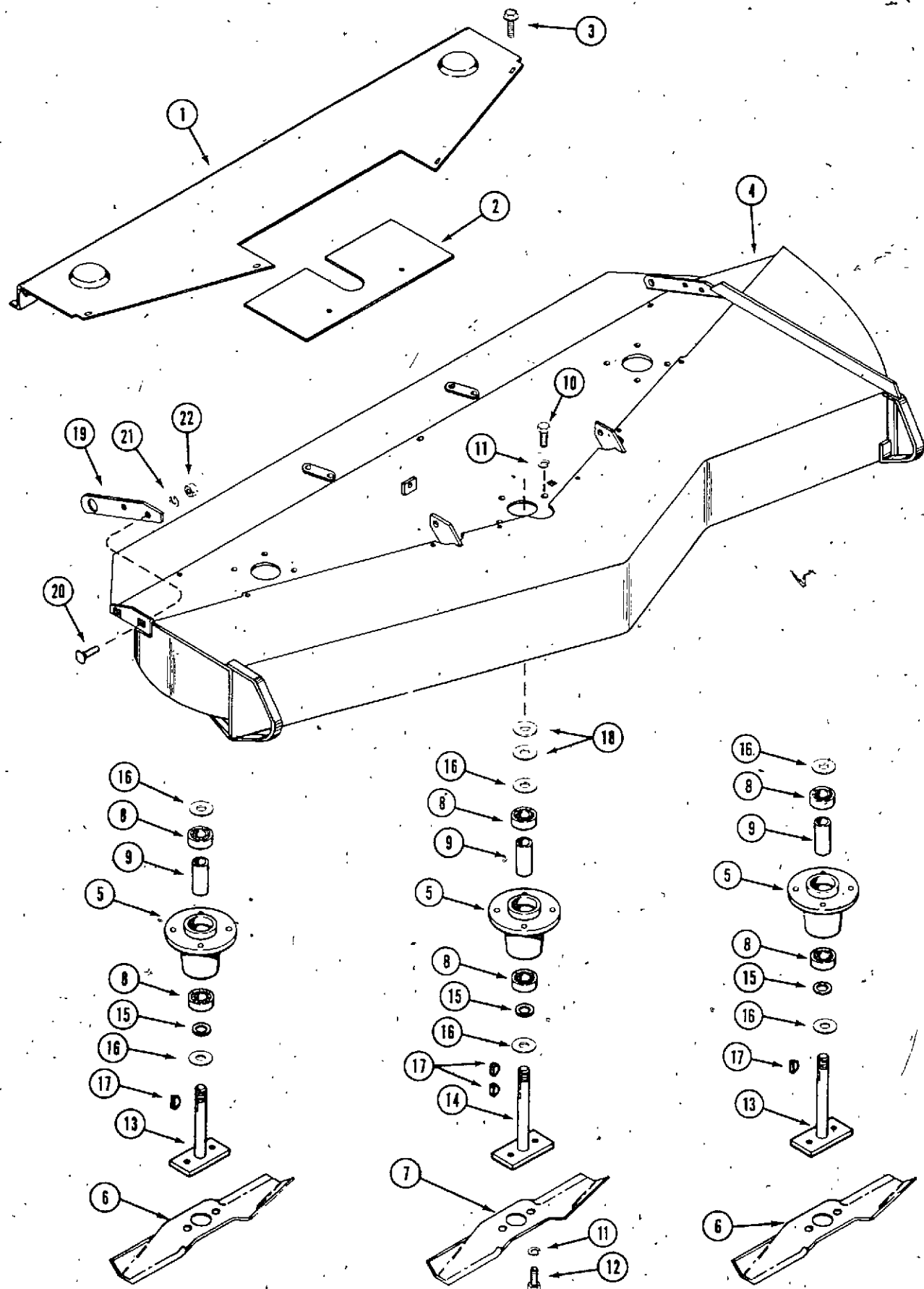


REF. PART NO.	DESCRIPTION	REQ'D
1 C 14960	PULLEY - deck drive.....	1
2 C 14962	PULLEY - spindle, center.....	1
3 C 14961	PULLEY - spindle, outboard.....	2
4 131- 172	NUT - lock 3/4" NF Z.P.	1
5 131- 152	NUT - lock 3/4" jam NF Z.P.	2
6 195- 545	WASHER - plain 3/4" Z.P.	1
7 131- 178	NUT - lock 3/8" NC hex Z.P.	2
8 195- 522	WASHER - plain 3/8" Z.P.	2
9 C 12251	PULLEY - deck idler.....	1
10 195- 530	WASHER - plain 1/2" Z.P.	1
11 C 14482	SPRING - deck idler.....	1
12 C 14731	BRACKET - deck idler.....	1
13 C 14768	SPACER - idler bracket.....	1
14 C 22708	BELT - mower deck.....	1
15 111- 317	BOLT - 3/8" x 1" NC rd. hd., square neck Z.P.	1
16 C 14888	DECK - mower 48".....	1
17 C 23810	BELT - drive.....	1
18 C 14892	SHAFT - rear roller.....	1
19 A 70514	ROLLER - 2-1/2" x 2-3/8" rubber.....	2
20 195- 108	WASHER - plain 5/8".....	4
21 132- 310	PIN - cotter 1/8" x 1" Z.P.	2
A 70404	DECAL - "Caution".....	2
C 12519	DECAL - "NO STEP".....	2
C 12664	DECAL - ASA safety.....	2
C 14969	DECAL - level indicator.....	1

7

CASE MODEL F46 48" ROTARY MOWER BLADES, SPINDLES AND DECK COVERS

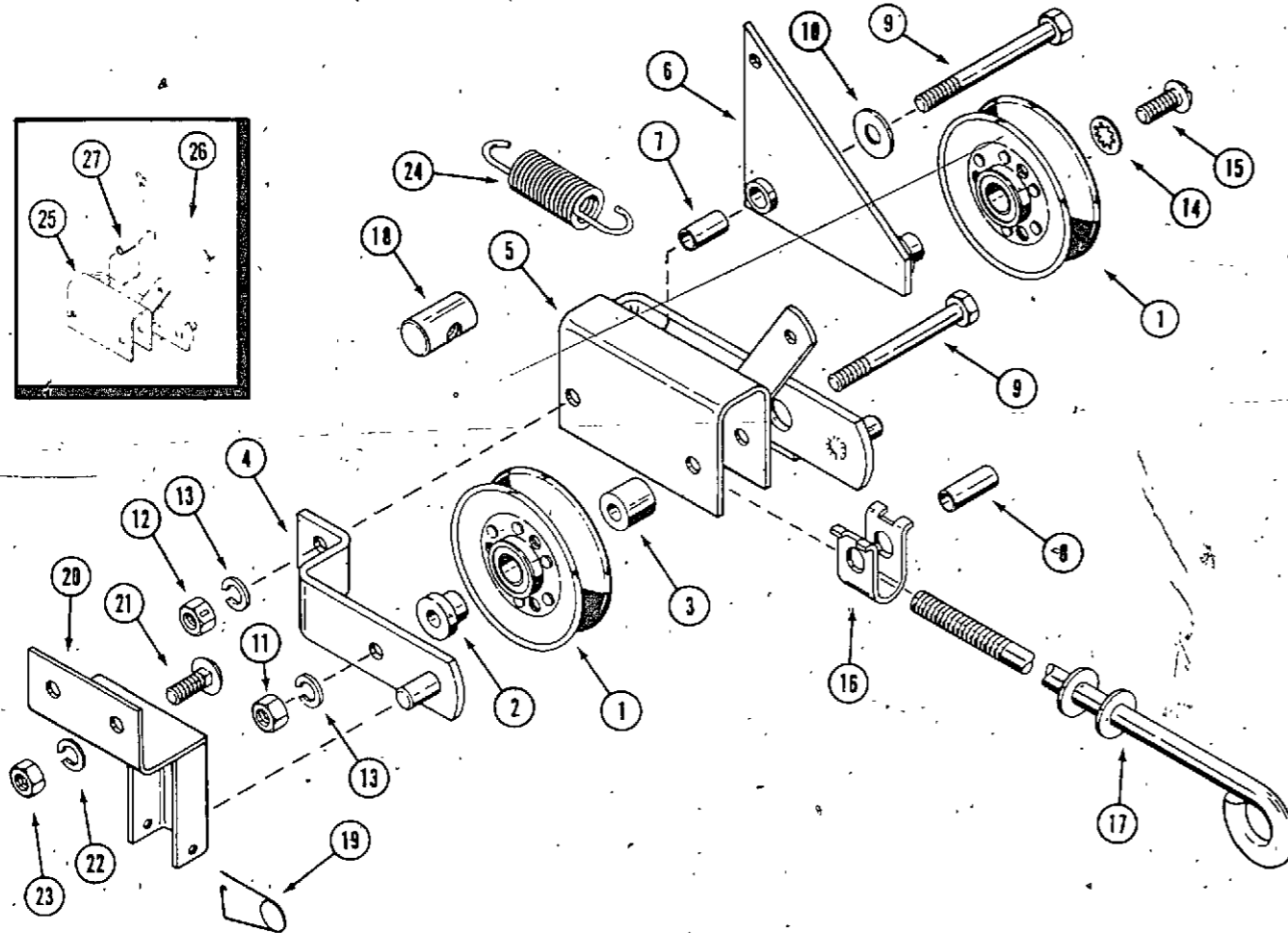
442 AND 444 COMPACT TRACTORS



REF. PART NO.	DESCRIPTION	REQ'D
1 C 14940	GUARD - deck belt, large	1
2 C 14939	GUARD - deck belt, small	1
3 187- 1036	SCREW - 1/4" x 1/2" NC hex self-tapping	9
4 C 14888	DECK - mower 48"	1
5 C 17666	HOUSING - mower spindle (also order (2) A63279)	3
6 C 14886	BLADE - mower, outboard 17"	2
7 C 14885	BLADE - mower, center 16"	1
8 A 70280	BEARING - spindle	6
9 C 10810	SPACER - bearing	3
10 15- 612	BOLT - 3/8" x 3/4" NC hex	12
11 92- 6	LOCKWASHER - 3/8"	18
12 115- 206	BOLT - 3/8" x 5/8" NC hex	6
13 C 10808	SPINDLE - outboard	2
14 C 14926	SPINDLE - center	1
15 C 10942	WASHER - bearing seal	3
16 C 10822	WASHER - mower spindle	6
17 126- 19	KEY - #11 Woodruff	4
18 195- 545	WASHER - spacer, center spindle	2
19 C 14775	BRACKET - axle R.H.	1
20 111- 317	BOLT - 3/8" x 1" NC rd. hd., square neck Z.P.	2
21 192- 21	LOCKWASHER - 3/8" Z.P.	2
22 129- 103	NUT - 3/8" NC hex Z.P.	2

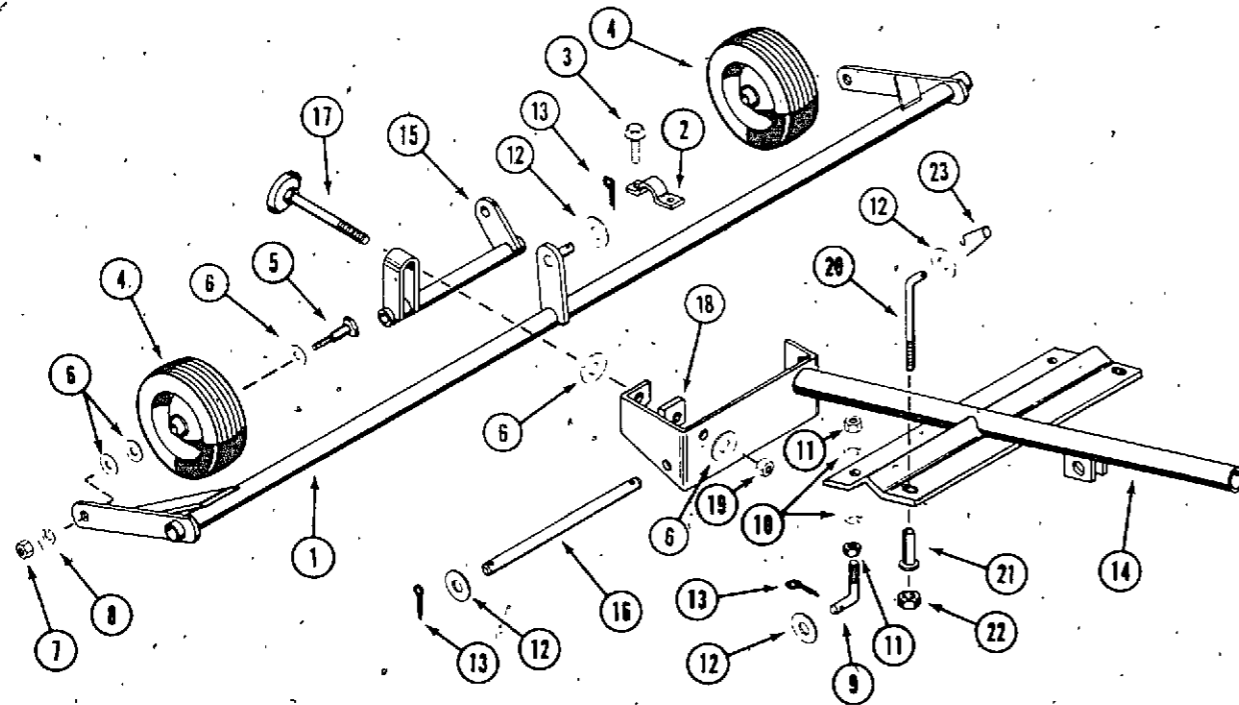
DRIVE ASSEMBLY

442 AND 444 COMPACT TRACTORS



REF. PART NO.	DESCRIPTION	REQ'D
1 C 10463	PULLEY - idler drive	2
2 C 12264	BUSHING - idler pulley	1
3 C 12249	SPACER - idler pulley	1
4 C 12256	BRACKET - pivot R.H.	1
5 C 14813	BRACKET ASSEMBLY (early production)	1
6 C 14811	BELLCRANK (early production)	1
7 C 14978	SPACER - bellcrank (early production)	1
8 C 12236	SPACER - idler bracket	2
9 113- 267	BOLT - 3/8" x 4" NC hex Z.P.	2
10 195- 522	WASHER - plain 3/8" Z.P.	1
11 129- 103	NUT - 3/8" NC hex Z.P.	1
12 131- 179	NUT - lock 3/8" NC hex	1
13 192- 21	LOCKWASHER - 3/8" Z.P.	2
14 193- 30	LOCKWASHER - 3/8" internal tooth	1
15 175- 420	SCREW - 3/8" x 3/4" NC truss head	1
16 C 14262	PIVOT - adjusting rod	1
17 C 14264	ROD - belt tension	1
18 C 14269	NUT - belt tension	1
19 C 10898	PIN - safety	2
20 C 14869	BRACKET - mower mounting R.H.	1
20 C 14868	BRACKET - mower mounting L.H.	1
21 111- 362	BOLT - 3/8" x 1" NC rd. hd., square neck	2
22 192- 21	LOCKWASHER - 3/8" Z.P.	2
23 129- 103	NUT - 3/8" NC hex Z.P.	2
24 C 14482	SPRING	1
25 C 15930	BRACKET ASSEMBLY (late production)	1
26 C 15962	BELLCRANK (late production)	1
27 C 15931	SPACER - bellcrank (late production)	1

REAR WHEELS, AXLE AND LIFT ASSEMBLY



1 C 14773	AXLE - rear wheels	1
2 C 14932	BRACKET - axle mounting	2
3 187- 1036	BOLT - 1/4" x 1/2" NC hex self-tapping	4
4 C 19556	WHEEL - rubber	2
5 C 14966	STUD - wheel	2
6 195- 533	WASHER - plain 1/2" Z.P.	8
7 129- 103	NUT - 3/8" NC hex Z.P.	2
8 192- 21	LOCKWASHER - 3/8" Z.P.	2
9 C 14933	"J" BOLT - short	2
10 192- 23	LOCKWASHER - 1/2" Z.P.	2
11 129- 105	NUT - 1/2" NC hex	4
12 195- 530	WASHER - plain 1/2" Z.P.	4
13 132- 310	PIN - cotter 1/8" x 1"	7
14 C 14642	FRAME - mower lift	1
15 C 14643	BRACKET - height adjust	1
16 C 14934	SHAFT - height adjust	1
17 C 14957	SCREW - height adjust	1
18 C 14959	NUT - height adjust	1
19 131- 168	NUT - lock 1/2" NF hex	1
20 C 14936	ROD - lift adjusting	2
21 C 12571	SLEEVE - lift	2
22 131- 165	NUT - lock 1/2" NC hex	2
23 C 10898	PIN - safety	2

INGERSOLL

Ingersoll Equipment Co., Inc.

INGERSOLL

Ingersoll Equipment Co., Inc.

INGERSOLL
Ingersoll Equipment Co., Inc.

INGERSOLL
Ingersoll Equipment Co., Inc.