

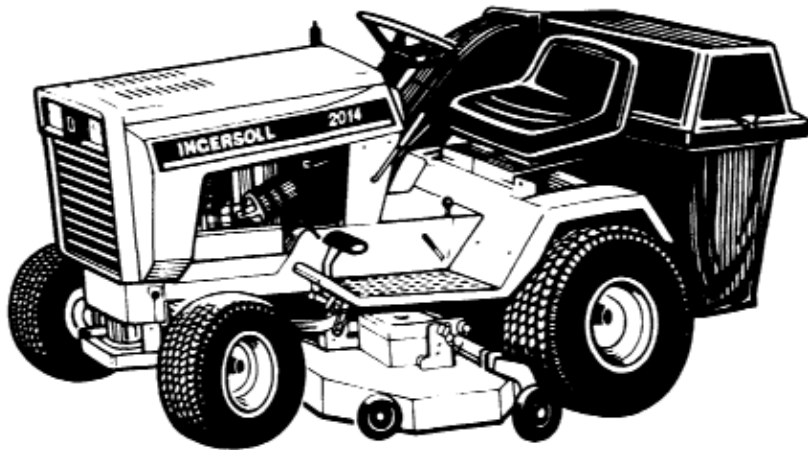


RM42Y2, RM44YR2 MOWERS
SB38Y2 SNOWCASTER
UB38Y2 UTILITY BLADE
BG42Y2 BAGGER
Parts Catalog 8-3280

INDEX

PAINT

GENERAL INFO



2014 Tractor with RM42Y2 Mower and BG42Y2 Bagger

ATTACHMENT APPLICATION CHART

TRACTOR MODEL
2012, 2014

ATTACHMENT MODEL
RM42Y2, RM44YR2
SB38Y2, UB38Y2
BG42Y2 *

*use with RM42Y2 mower

ALPHABETICAL INDEX

RM42Y2 ROTARY MOWER

Deck and Chute	5
Spindles, Belts and Pulleys.....	7
Mounting Brackets and Axle	9
Decals.....	23

RM44YR2 ROTARY MOWER

Deck, Belts and Backside Idler Pulley.....	11
Spindles and Blades	13
Axle and Mounting Brackets	13
Decals.....	23

SB38Y2 SNOWBLOWER

Auger and Chute Assembly	15
Mounting Components and Drive Assembly	17
Decals.....	23

UB38Y2 UTILITY BLADE

Entire Parts List.....	19
Decals.....	23

BG42Y2 BAGGER

Entire Parts List.....	21
Decals.....	23

INDEX

There is an index at the front and rear of this catalog. The front index is an alphabetical index of the major groups or assemblies.

The rear index is a numerical index of the part numbers and pages on which these numbers are shown.

ILLUSTRATION

Each illustration in this catalog shows a group of parts or components. These parts and components are aligned approximately as the parts and components on your machine. Each part and component in an illustration has a reference number. These reference numbers are in a list on the page opposite of the illustration. Next to the reference number is the part number, description and required quantity of the part shown in the illustration.

UAR - "Use as required" indicates that the part quantity is variable.

NSS - "Not sold separately" indicates that the part is only available as component of an assembly or the part must be purchased locally. If the part is an assembly component, the description will be indented under the assembly description in the parts list.

O/L - "Obtain locally"

- "Footnotes" are added to a part number when more information is needed for identification. They only relate to the part numbers indicated. All orders must include the following information:

PARTS ORDERS

1. Correct part number.
2. Complete description of part or component.
3. Total quantity of each part or component.
4. Product model number.
5. All necessary product identification numbers.
6. Method for sending the parts.
7. Complete and correct address.

CATALOG REVISIONS

As the product changes, new pages will be available for your catalog. A notice will be issued.

IMPORTANT: Put all revisions into the catalog as soon as possible.

RIGHT HAND AND LEFT HAND IDENTIFICATION

The words right hand (RH) and left hand (LH) as used in this catalog indicate the direction while you are in the operator's seat in the normal operating position.

INDENTED DESCRIPTIONS

An assembly can have many components. The components of an assembly are indicated by an indented description. The quantity for an indented part is the total needed for that complete assembly. See the example.

REF.	PART NO.	DESCRIPTION	REQ'D
	C 55159	CYLINDER ASSY - rear steering	1
28	C 56208	SOCKET ASSY - rear cylinder	1
29	C 55956	PLUG - adjusting, socket assy	1
30	C 55957	SEAT- socket, ball.....	2
31	C 56210	SPRING-socket	1
32	C 56209	SEAT - socket spring	1
33	G 45175	CLAMP ASSY - socket assy	1
	16- 836	BOLT-1/2"x2-1/4" N.F. hex.....	1
34	132- 104	PIN-cotter, 3/16"x3".....	1
35	C 55889	STUD - ball, socket & cylinder	2
36	13- 410	BOLT-1/4"x5/8"N.C.,hex	4
37	92- 4	LOCK WASHER - 1/4"SAE	4

INDEX

PAINT AND OIL

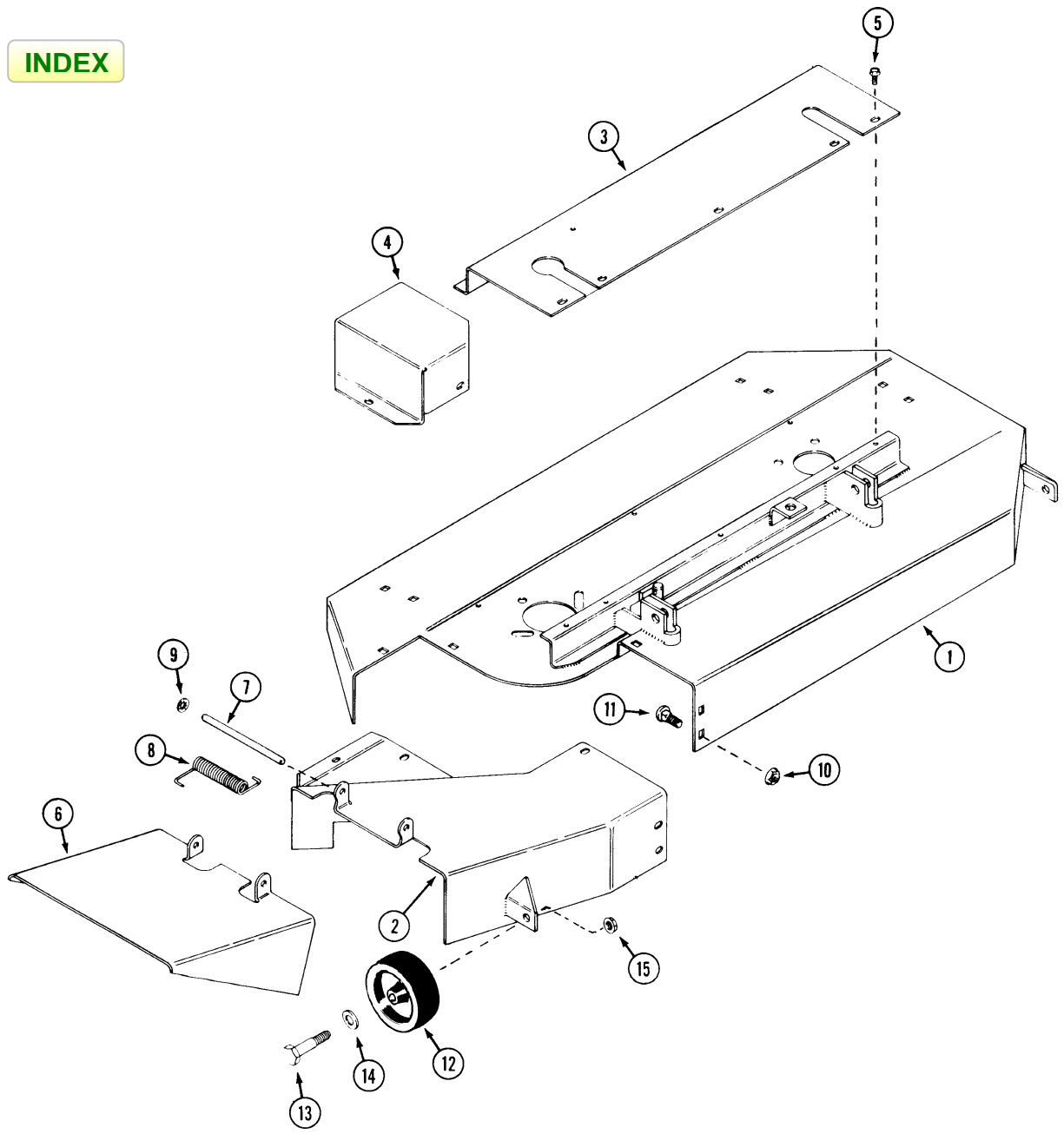
PAINT

REF.	PART NO.	DESCRIPTION	REQ'D
1	C 28849	BLACK - semi - gloss, 12 oz spray (2 per carton)	1
2	C 28850	BLACK - semi - gloss, quart (2 per carton)	1
3	C 28850	BLACK - semi - gloss, heat resistant, 12 oz spray (2 per carton)	1
4	C 28484	POWER RED - gloss, 12 oz spray (2 per carton)	1
5	C 28485	POWER RED - gloss, quart (2 per carton)	1
6	C 30870	SILVER - gloss, 12 oz. spray (2 per carton).....	1
7	C 31643	POWER RED - gloss, 1 oz touch up, (1 doz. per carton)	1

OIL

1	C 32776	OIL - SAE 30, SF, quart (12 per case)	1
2	C 32777	OIL - SAE 5W20, SF, quart (12 per case)	1
3	C 32778	OIL - SAE 20W40, SF, quart (12 per case)	1

INDEX



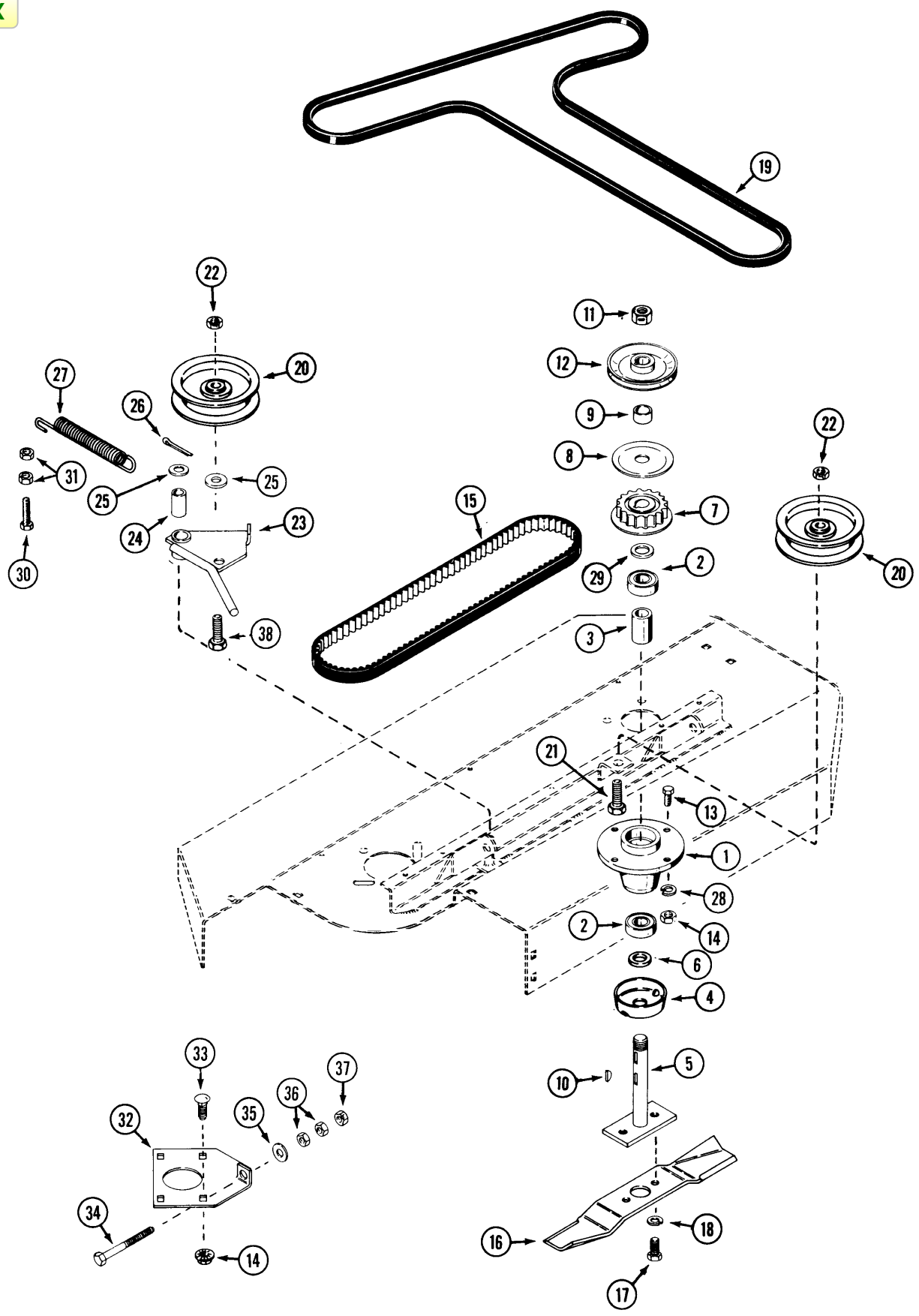
INDEX

RM42Y2 ROTARY MOWER

DECK AND CHUTE

REF.	PART NO.	DESCRIPTION	REQ'D
1	C36805	DECK - mower	1
2	C36802	CHUTE - mower	1
3	C30738	COVER - belt	1
4	C30741	COVER - end, belt R.H	1
4	C36856	COVER - end, belt L.H.....	1
5	187-1036	SCREW - 1/4" x 1/2" self-tap.....	12
6	C30744	DEFLECTOR - chute	1
7	C30766	PIN - hinge	1
8	C30767	SPRING - hinge	1
9	C30768	NUT - push	2
10	111-217	BOLT - 5/16" x 5/8" carriage	6
11	131-911	NUT - 5/16" flange lock	6
12	C33709	WHEEL - anti-scalp.....	2
13	C16745	BOLT - shoulder	2
14	195-533	WASHER - 1/2"	2
15	131-938	NUT - flange lock	2

INDEX

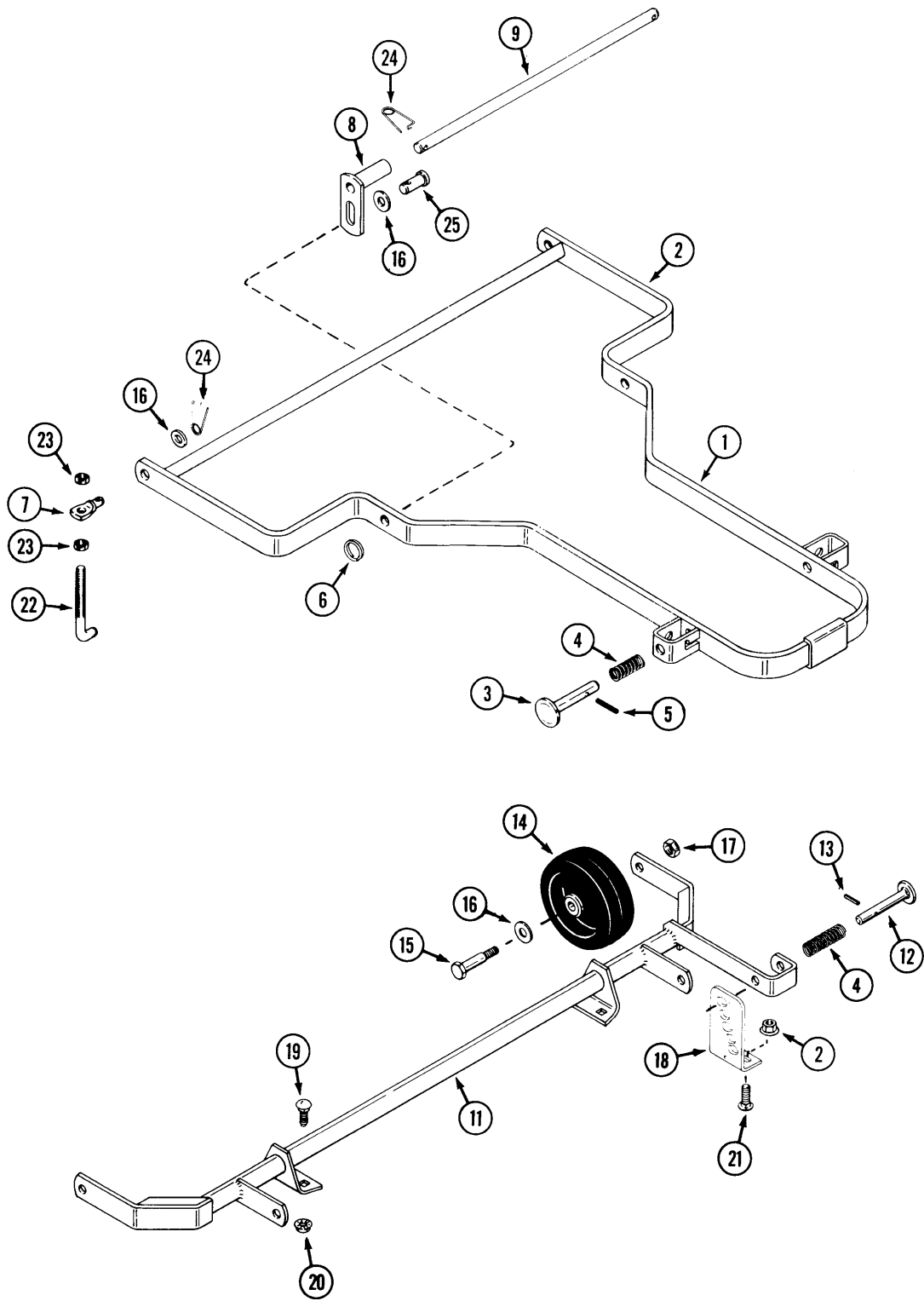


RM42Y2 ROTARY MOWER

SPINDLES, BELTS AND PULLEYS

REF.	PART NO.	DESCRIPTION	REQ'D
1	C30729	HOUSING - spindle.....	2
2	C28971	BEARING - spindle.....	4
3	C29453	SPACER - bearing.....	2
4	C25543	SHIELD - bearing.....	2
5	C32421	SPINDLE - mower.....	2
6	C25541	SPACER - shield.....	2
7	C37196	SPROCKET - timing.....	2
8	C30733	RETAINER - belt, timing.....	2
9	C30734	SPACER - pulley and sprocket.....	2
10	126-13	KEY - woodruff No. 11.....	4
11	131-1331	NUT - 3/4" (use 60 ft. lb of torque).....	2
12	C23452	PULLEY - drive.....	2
13	113-208	BOLT - 3/8" - 16 x 1-1/4".....	4
14	129-103	NUT - 3/8".....	8
15	C30736	BELT - timing.....	1
16	C33275	BLADE - 21 - 3/8".....	2
17	113-206	BOLT - 3/8" x 3/4".....	4
18	192-21	LOCKWASHER - 3/8".....	4
19	C31216	BELT - drive.....	1
20	C26090	PULLEY - backside idler.....	2
21	113-410	BOLT - 1/2" - 13 x 1-1/2".....	1
22	131-1182	NUT - 1/2" lock.....	2
23	C37121	ARM - idler (includes bushing).....	1
24	C16714	BUSHING.....	1
25	195-533	WASHER - 1/2".....	2
26	132-310	PIN - cotter 1/8" x 1".....	1
27	C36998	SPRING - tension.....	1
28	192-21	LOCKWASHER - 3/8".....	8
29	C28972	WASHER.....	2
30	113-207	BOLT - 3/8" - 16 x 1".....	1
31	131-1352	NUT - 3/8" - 16 flange lock.....	2
32	C30735	PLATE - belt adjusting.....	1
33	111-366	BOLT - 3/8" - 16 x 1-1/4" carriage.....	4
34	123-101	BOLT - 5/16" - 18 x 4".....	1
35	195-520	WASHER - .312 I.D. x .88 O.D.....	1
36	129-102	NUT - 5/16".....	2
37	131-911	NUT - 5/16" lock.....	1
38	113-421	BOLT - 1/2" - 13 x 2".....	1

INDEX

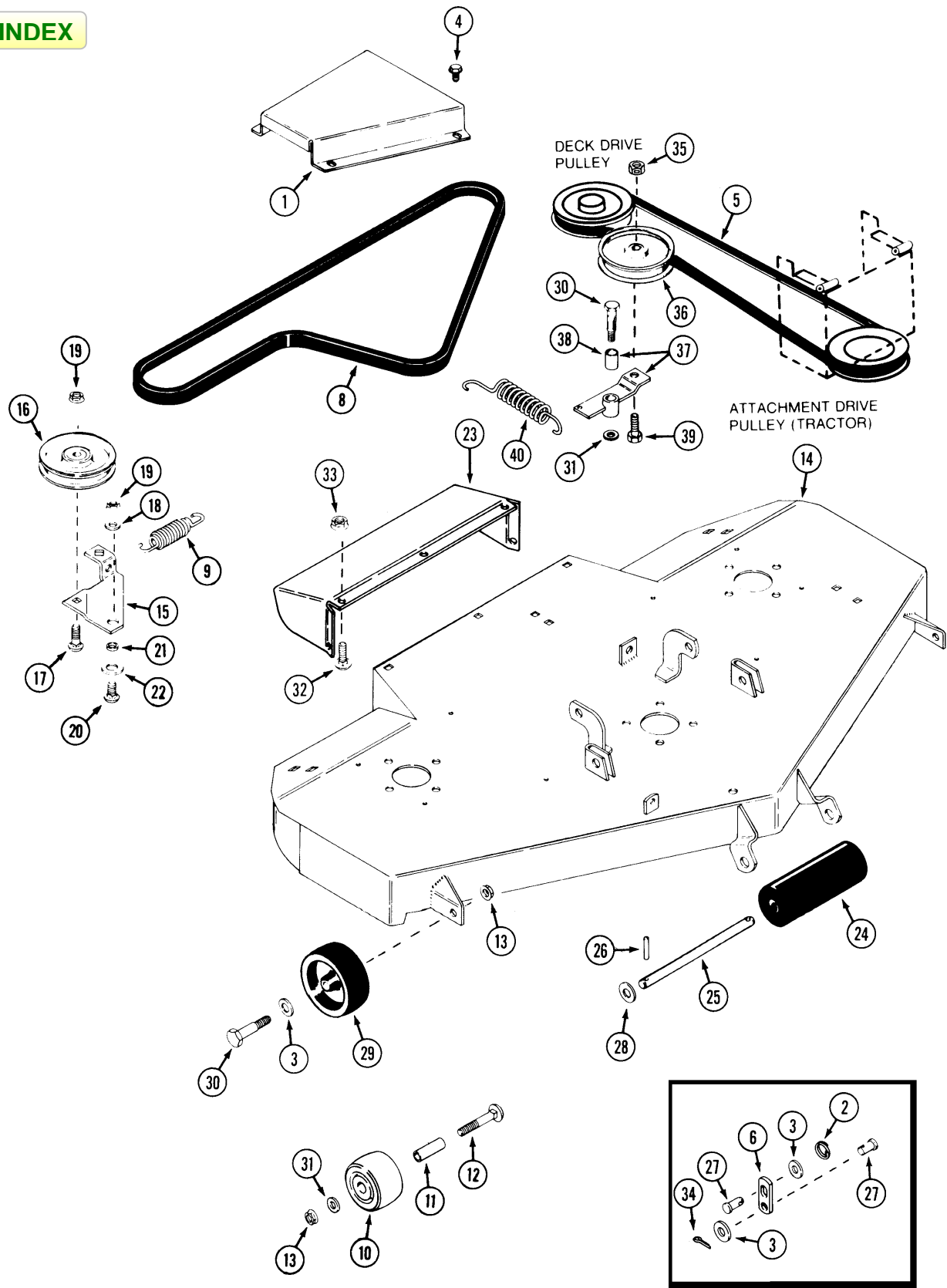


RM42Y2 ROTARY MOWER

MOUNTING BRACKETS AND AXLE

REF.	PART NO.	DESCRIPTION	REQ'D
1	C44796	BRACKET - tow	1
2	131-911	NUT - 5/16" - 18 flange lock	2
3	C15278	PIN - latch.....	2
4	C10482	SPRING - compression.....	3
5	138-2073	PIN - spiral 3/16" x 1-1/4"	2
6	C28105	RING - retaining	2
7	C26033	LINK - adjusting.....	2
8	C42342	LINK - lift L.H.....	1
8	C42339	LINK - lift R.H	1
9	C41082	ROD - lift.....	1
10	132-310	PIN - cotter 1/8" x 1".....	4
11	C36817	AXLE - rear	1
12	C20005	PIN - height adjust.....	1
13	138-96	PIN - roll 3/16" x 1".....	1
14	C26736	WHEEL - gauge	2
15	C16745	BOLT - shoulder	2
16	195-533	WASHER - 1/2"	8
17	131-938	NUT - 3/8" - flange lock	2
18	C36823	BRACKET - height adjust.....	2
19	111-340	BOLT - 3/8" - 16 x 3/4" carriage	4
20	131-938	NUT - 3/8" flange lock	4
21	111-132	BOLT - 5/16" - 18 x 3/4" carriage	2
22	C36838	BOLT - "J".....	2
23	131-930	NUT - 1/2" lock.....	4
24	C10898	PIN - safety	4
25	C41089	PIN - clevis	2

INDEX

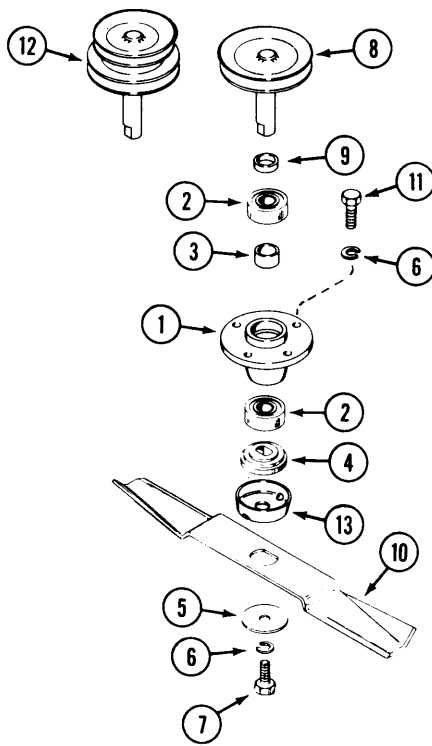


RM44YR2 ROTARY MOWER

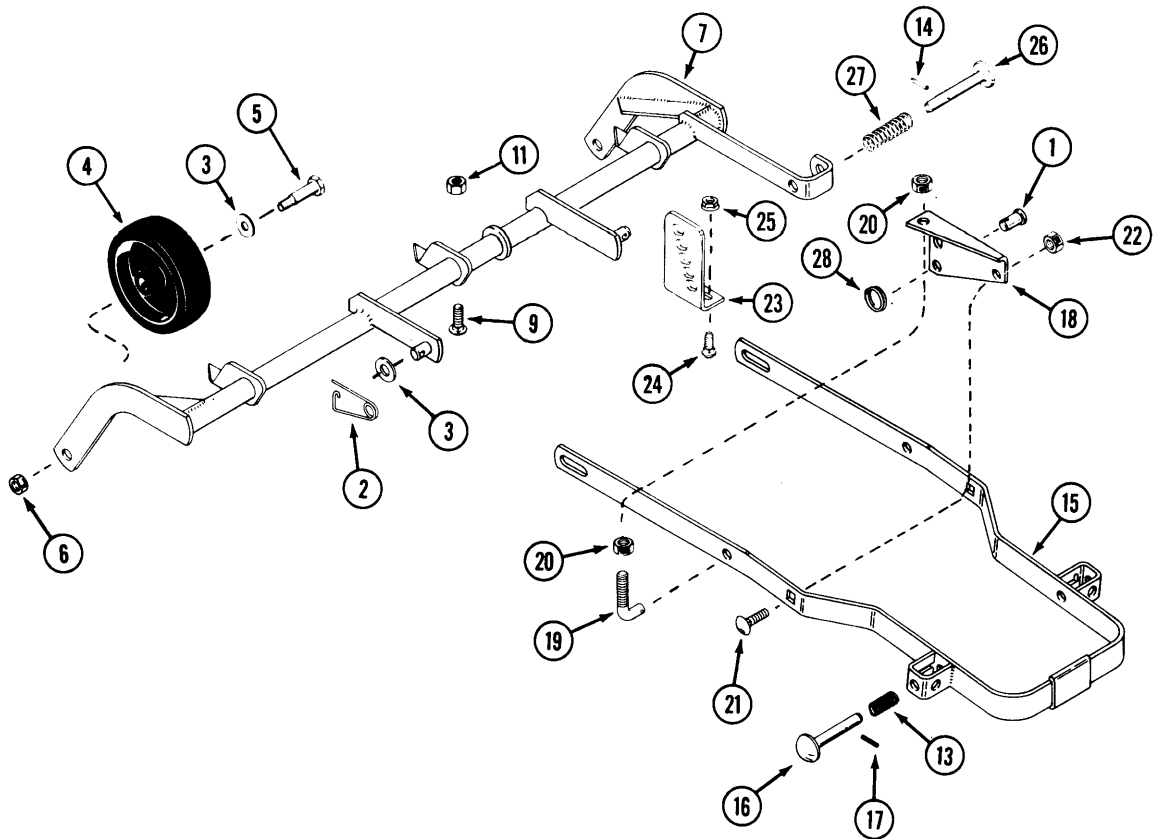
DECK, BELTS AND BACKSIDE IDLER PULLEY

REF.	PART NO.	DESCRIPTION	REQ'D
1	C34718	COVER - deck belt L.H	1
1	C34719	COVER - deck belt R.H. (shown).....	1
2	C28105	RING - retaining	4
3	195-533	WASHER - 1/2"	4
4	187-1036	SCREW - 1/4" x 1/2" self-tapping.....	8
5	C42410	BELT - drive 52"	1
6	C27096	LINK - lift (use on 100 series tractors)	2
6	C42408	LINK - lift (use on 2000 series tractors)	2
8	C23949	BELT - mower deck.....	1
9	C31606	SPRING - tension.....	1
10	C31500	ROLLER - anti-scalp, rear.....	2
11	C31501	SPACER - sleeve	2
12	111-375	BOLT - 3/8" - 16 x 3" carriage	1
13	131-938	NUT - 3/8" - 16 flange lock	3
14	C42394	DECK - mower	1
15	C31608	PLATE - idler.....	1
16	C12251	PULLEY - backside idler	1
17	111-366	BOLT - 3/8" - 16 x 1-1/4" carriage.....	1
18	195-525	WASHER - 3/8"	1
19	131-1352	NUT - 3/8" - 16 flange lock	3
20	111-371	BOLT - 3/8" 16 x 1" carriage	1
21	C14768	SPACER - sleeve	1
22	195-105	WASHER - 1/2"	1
23	C42409	DEFLECTOR - chute	1
24	C28977	ROLLER - 7", front	1
25	C26405	SHAFT - roller	1
26	138-106	PIN - roll 3/16" x 2-1/2"	1
27	C10821	PIN - clevis 1/2" x 1"	4
28	195-541	WASHER - 5/8"	1
29	C33709	WHEEL - anti-scalp, front.....	2
30	C16745	BOLT - shoulder	3
31	C30649	WASHER - spacer	2
32	111-101	BOLT - 1/4" - 20 x 5/8" carriage	5
33	131-934	NUT - 1/4" - 20 flange	5
34	132-310	PIN - cotter	2
35	131-1182	NUT - 1/2" lock	1
36	C26090	PULLEY - idler, drive belt.....	1
37	C27109	IDLER ARM ASSEMBLY	1
38	C16714	BUSHING - sleeve.....	1
39	113-410	BOLT - 1/2" - 13 x 1-1/2"	1
40	C36998	SPRING - idler, drive belt.....	1

INDEX



INDEX



RM44YR2 ROTARY MOWER

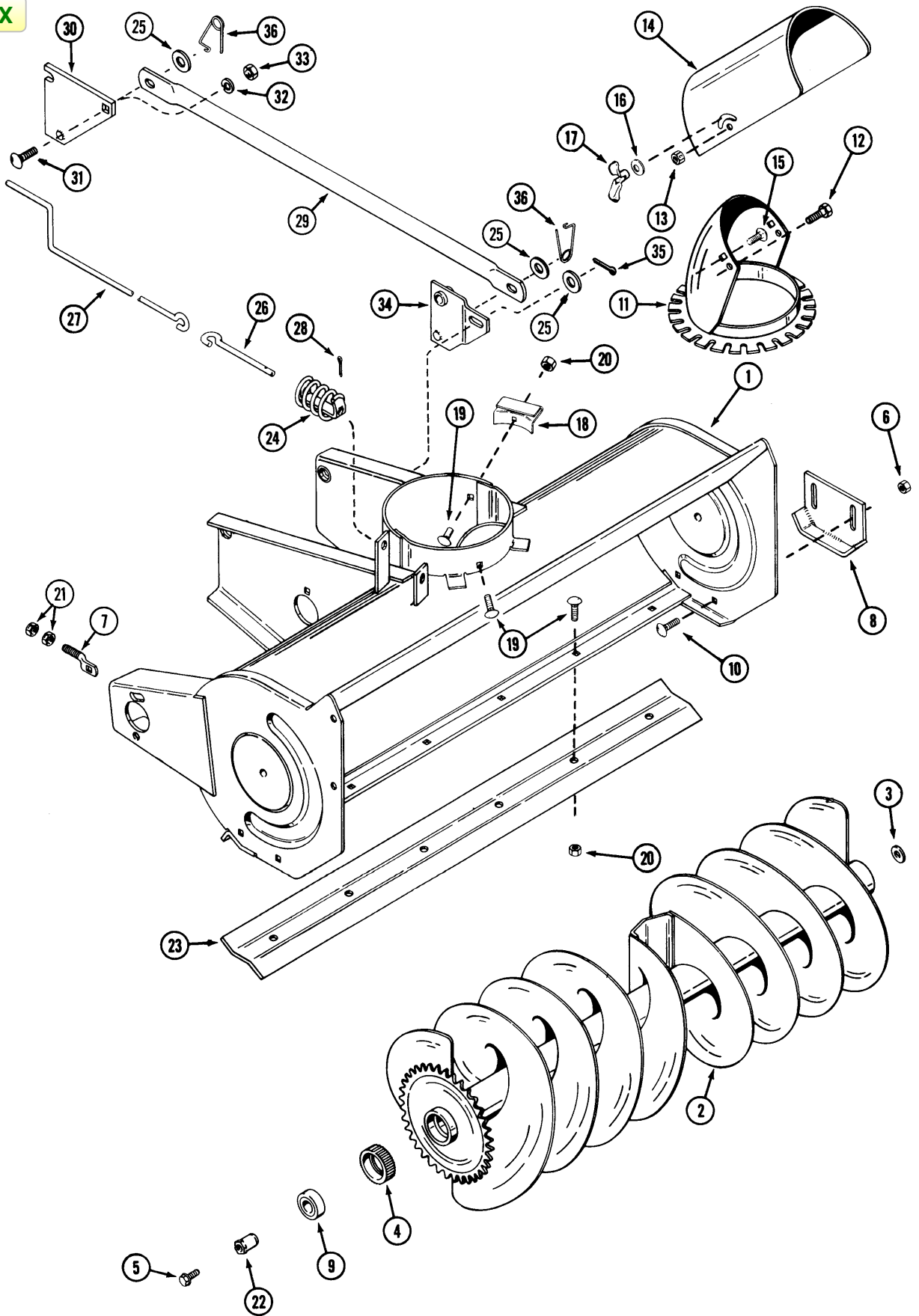
SPINDLES AND BLADES

REF.	PART NO.	DESCRIPTION	REQ'D
1	NSS	HOUSING - spindle (use C17666 and (2) C16516).....	3
2	C28971	BEARING - spindle	6
3	C10810	SPACER - bearing	3
4	C25542	ADAPTER - blade	3
5	C31452	WASHER - 3/8" x 2"	3
6	192-21	LOCK WASHER - 3/8"	15
7	113-209	BOLT - 3/8" - 16 x 1-1/2" (use 35 ft lb. or torque)	3
8	C31566	SPINDLE - outboard	2
9	C29431	SPACER - spindle	3
10	C31571	BLADE - 15 - 1/2"	3
11	113-206	BOLT - 3/8" - 16 x 3/4" (use 15 ft lb. of torque).....	12
12	C36868	SPINDLE - center.....	1
13	C25544	SHIELD - bearing.....	3

AXLE AND MOUNTING BRACKETS

REF.	PART NO.	DESCRIPTION	REQ'D
1	C10821	PIN - clevis	2
2	C10898	PIN - safety	4
3	195-533	WASHER - 1/2"	4
4	C31498	WHEEL - gauge	2
5	C31499	BOLT - shoulder.....	2
6	131-930	NUT - 3/8" - flange lock.....	2
7	C42402	AXLE - rear	1
8	C14932	BRACKET - axle mounting.....	1
9	111-340	BOLT - 3/8" - 16 x 3/4" carriage (shown)	4
9	121-228	BOLT - 3/8" - 16 x 3/4" flange lock (center support)	2
10	192-19	LOCK WASHER - 1/4"	2
11	131-938	NUT - 3/8" - 16 flange lock.....	6
12	C20005	PIN - retaining	1
13	C10482	SPRING.....	2
14	138-96	PIN - roll 3/16" x 1".....	1
15	C42404	FRAME - mounting.....	1
16	C15278	PIN - retaining	2
17	138-99	PIN - roll 3/16" x 1".....	2
18	C27118	BRACKET - suspension adjust R.H. (shown).....	1
18	C27119	BRACKET - suspension adjust L.H	1
19	C19088	BOLT - "J" suspension adjust.....	2
20	131-1182	NUT - 1/2" - 13 lock.....	4
21	111-517	BOLT - 1/2" - 13 x 1" carriage	2
22	131-1308	NUT - 1/2" - 13 lock.....	2
23	C34734	BRACKET - height adjust.....	1
24	111-132	BOLT - 5/16" - 18 x 3/4"	2
25	131-911	NUT - 5/16" - 18 flange	2
26	C20005	PIN - locking.....	1
27	C10482	SPRING - compression.....	1
28	C28105	RING - retaining	2

INDEX

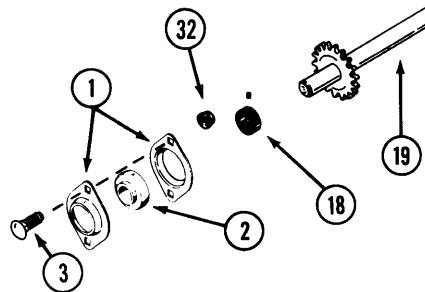
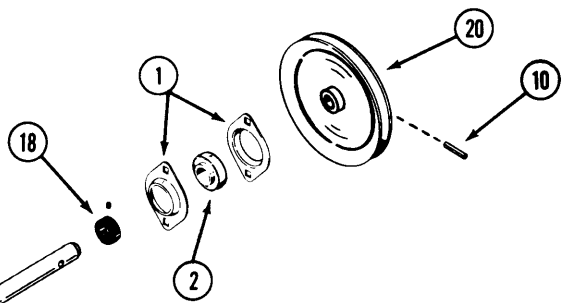
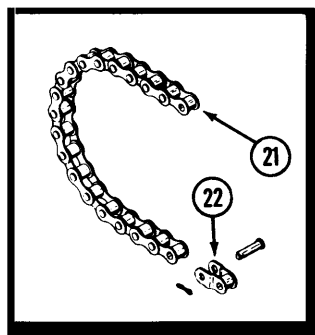
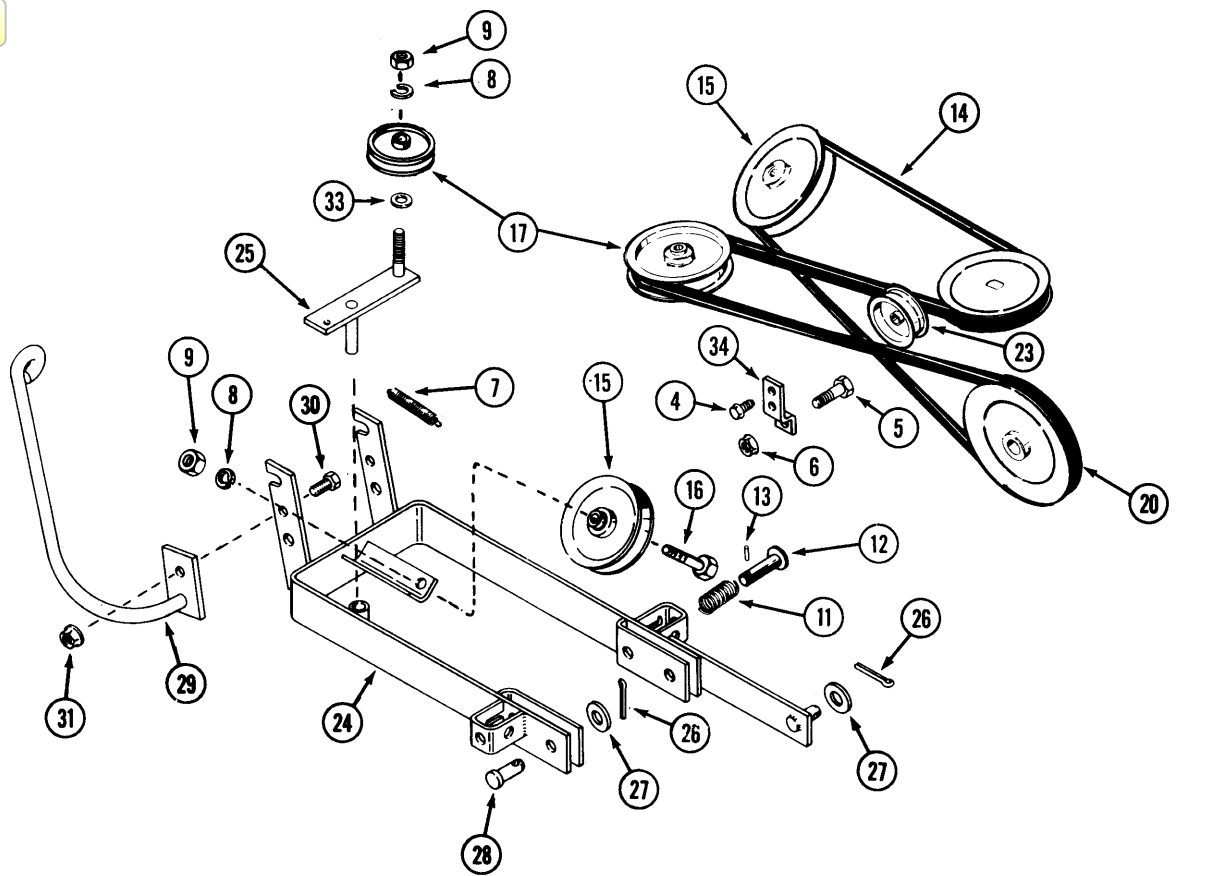


MODEL SB38Y2 SNOWBLOWER

AUGER AND CHUTE ASSEMBLY

REF.	PART NO.	DESCRIPTION	REQ'D
1	C29875	HOUSING - auger 38" (965 mm)	1
2	C25206	AUGER - includes items 4, 9 and 22	1
3	195-522	WASHER - spacer	UAR
4	C25840	SLEEVE - bearing	2
5	121-226	BOLT - 3/8" x 1" flange lock NC (use lock tite for installation)	2
6	131-938	NUT - 3/8" NC hex	4
7	C29877	SCREW - chain adjust	1
8	C17775	SKID - shoe	2
9	C28971	BEARING - auger	1
10	111-340	BOLT - 3/8" NC x 3/4" carriage	4
11	C15248	CHUTE - discharge	1
12	113-1	BOLT - 1/4" NC x 1/2" hex	2
13	131-1102	NUT - 1/4" NC hex lock	2
14	C16940	DEFLECTOR	1
15	111-340	BOLT - 3/8" NC x 3/4" carriage	2
16	C28263	WASHER - dished 25/64" x 1"	2
17	C22774	WING NUT - deflector lock	2
18	C15334	BRACKET - chute hold down	3
19	111-132	BOLT - 15/16" NC x 3/4" carriage	9
20	131-911	NUT - 5/16" NC hex flange lock	9
21	129-163	NUT - 3/8" - 24 lock	2
22	C25841	SHAFT - stub	2
23	C17878	BLADE - scraper	1
24	C24640	COIL - chute control	1
25	195-533	WASHER - 1/2"	4
26	C24643	ROD - chute control	1
27	C24644	CRANK - chute control	1
28	132-300	PIN - cotter 1/8" x 7/8"	1
29	C29684	ROD - lift	1
30	C29663	PLATE - lift adapter	1
31	111-524	BOLT - 1/2" - 13 x 1-1/2" carriage	1
32	192-23	LOCK WASHER - 1/2"	1
33	129-105	NUT - 1/2" - 13 hex	1
34	C29685	BELLCRANK - lift	1
35	132-310	PIN - cotter 1/8" x 1"	1
36	C10898	PIN - safety	2

INDEX

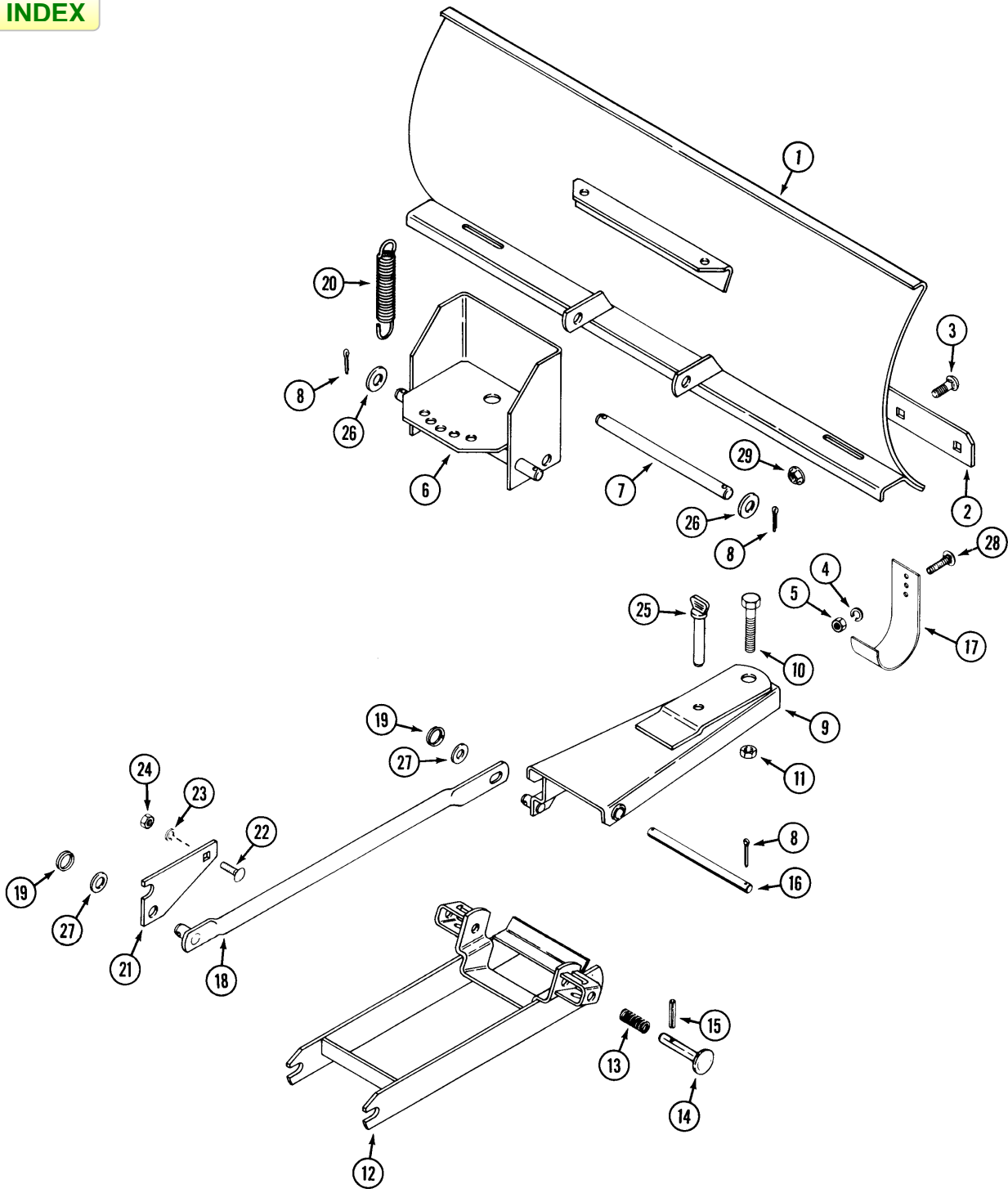


MODEL SB38Y2 SNOWBLOWER

MOUNTING COMPONENTS AND DRIVE ASSEMBLY

REF.	PART NO.	DESCRIPTION	REQ'D
1	C28277	FLANGETTE	4
2	C28817	BEARING - 3/4" (includes locking collar)	2
3	111-132	BOLT - 5/16" - 18 x 3/4" carriage	UAR
4	187-1036	SCREW - 1/4" - 20 x 1/2	2
5	113-209	BOLT - 3/8" - 16 x 1-1/2"	1
6	131-1352	NUT - 3/8" - 16 flange lock	1
7	C19553	SPRING - extension	1
8	192-21	LOCK WASHER - 3/8"	3
9	129-103	NUT-3/8"-16	3
10	138-2040	PIN - spiral 1/4" x 1-1/2"	1
11	C10482	SPRING - compression	2
12	C15278	PIN - latch	2
13	138-2073	PIN - spiral 3/16" x 1-1/4"	2
14	C27023	BELT - drive	1
15	C15329	PULLEY - "V" idler	1
16	113-233	BOLT - 3/8" - 16 x 1-3/4"	3
17	C42426	PULLEY - idler 4 -1/2"	1
18	C29024	COLLAR - locking (included with bearing)	2
19	C19733	SHAFT - drive	1
20	C19731	PULLEY - drive shaft	1
21	C18183	CHAIN - auger drive #40	1
22	C28983	LINK - offset #40	1
	C28982	LINK - connecting #40	1
23	C15672	PULLEY - idler 2-1/2" (64 mm)	1
24	C29681	BRACKET - mounting	1
25	C42425	ARM - idler	1
26	132-310	PIN - cotter 1/8" x 1"	3
27	195-533	WASHER - 1/2"	3
28	C29693	PIN - clevis 1/2" x 1-3/4"	2
29	C29687	SUPPORT - chute crank	1
30	113-207	BOLT - 3/8" - 16 x 1"	1
31	131-938	NUT - 3/8" - 16 flange lock	1
32	131-911	NUT - 5/16" -18 flange lock	1
33	195-525	WASHER - spacer	1
34	C42432	BRACKET - idler mount	1

INDEX

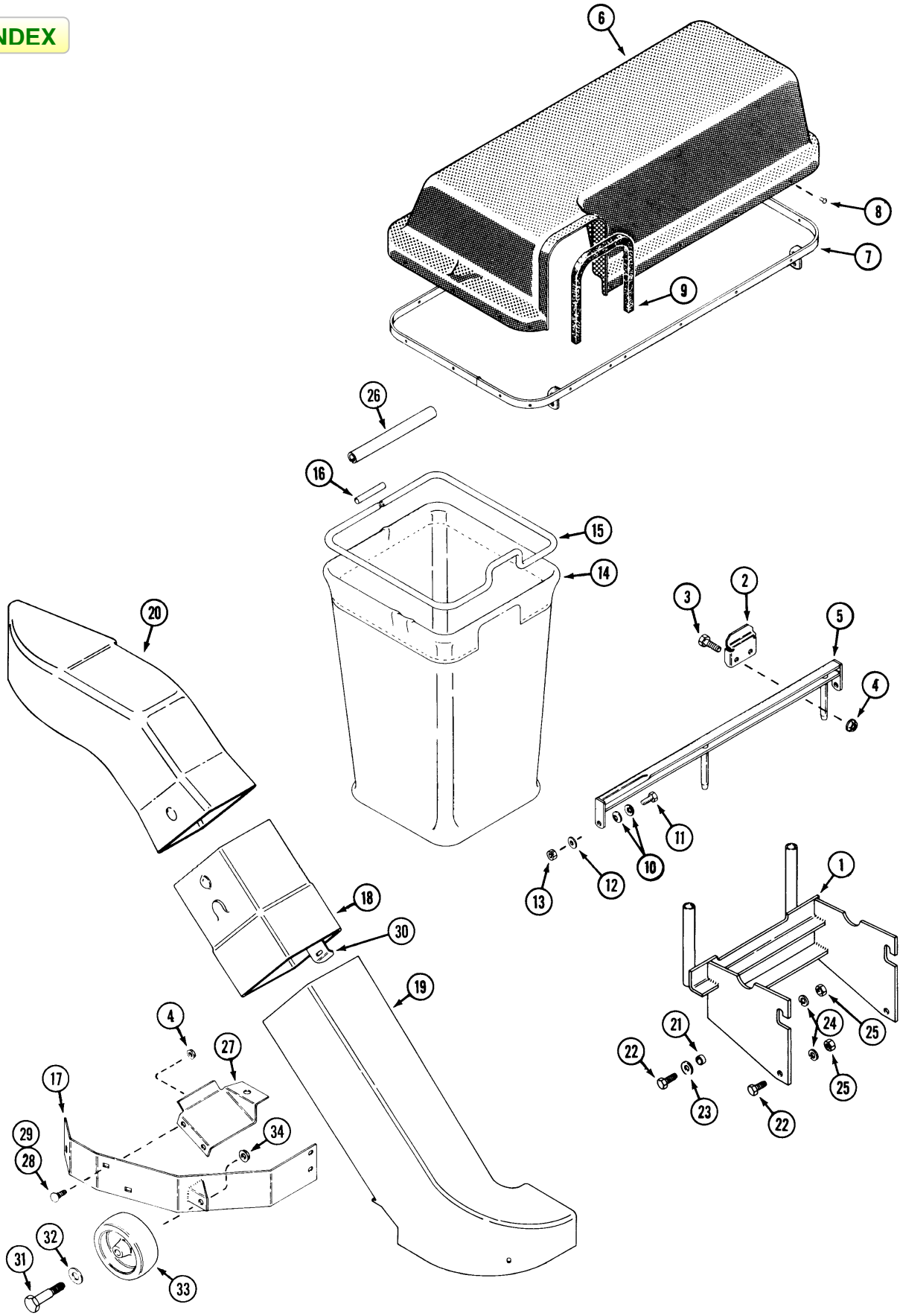


MODEL UB38Y2 UTILITY BLADE

UTILITY BLADE

REF.	PART NO.	DESCRIPTION	REQ'D
1	C42505	BLADE ASSEMBLY - 38" (965 mm)	1
2	C15462	EDGE - cutting	1
3	111-132	BOLT - 5/16" - 18 x 3/4" carriage	8
4	192-20	LOCK WASHER - 5/16"	2
5	129-102	NUT - 5/16" NC hex	2
6	C42508	PIVOT - blade	1
7	C42512	PIN - blade pivot	1
8	132-310	PIN - cotter 1/8" x 1"	4
9	C42514	BRACKET - push	1
10	113-713	BOLT - 3/4" - 10 x 1-3/4"	1
11	131-1112	NUT - 3/4" - 10 lock	1
12	C42518	BRACKET - mounting	1
13	C10482	SPRING - compression	2
14	C15278	PIN - latch	2
15	138-99	PIN - roll 3/16" x 1-3/8"	2
16	C29912	PIN - bracket pivot	1
17	C15469	SHOE - skid	2
18	C42522	ROD - lift	1
19	C28105	RING - retainer	2
20	C16805	SPRING - blade extension	1
21	C42525	PLATE - adapter (for 100 series tractors)	1
22	111-524	BOLT - 1/2" - 13 x 1-1/2" carriage	1
23	192-23	LOCK WASHER - 1/2"	1
24	129-105	NUT - 1/2" - 13	1
25	C10888	PIN - locking	1
26	195-541	WASHER - 5/8"	4
27	195-533	WASHER - 1/2"	2
28	111-203	BOLT - 5/16" - 18 x 1" carriage	2
29	131-911	NUT - 5/16" - 18 flange lock	2

INDEX

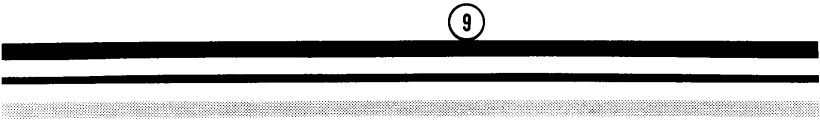


BG42Y2 BAGGER

BAGGER ASSEMBLY

REF.	PART NO.	DESCRIPTION	REQ'D
1	C40739	BRACKET - mounting	1
2	C28436	BRACKET - retaining, hopper	1
3	113-102	BOLT - 5/16" x 3/4"	12
4	131-911	NUT - 5/16" flange lock	5
5	C28434	FRAME - support	1
6	C32101	COVER - bagger	1
7	C29871	HINGE - cover	1
8	151-88	RIVET - 3/16" x 5/16"	17
9	C24610	SEAL-chute	1
10	C25114	SPRING WASHER - Belleville	4
11	113-103	BOLT - 5/16" - 18 x 1"	2
12	195-521	WASHER - 5/16"	3
13	131-176	NUT - 5/16" - 18 lock	2
14	C28438	BAG - grass	2
15	C28439	ROD - bag, support	2
16	C28440	TUBE - retaining	2
17	C40944	GUARD - chute	1
18	C42197	CHUTE - middle	1
19	C40940	CHUTE - lower	1
20	C34781	CHUTE - upper	1
21	C14768	SPACER	2
22	113-207	BOLT - 3/8" x 1"	4
23	195-525	WASHER - 3/8"	2
24	192-21	LOCK WASHER - 3/8"	4
25	129-103	NUT - 3/8"	4
26	C32400	GUARD - bag	2
27	C40948	DEFLECTOR	1
28	111-222	BOLT - 5/16" - 18 x 1/2" carriage	2
29	111-132	BOLT - 5/16" - 18 x 3/4" carriage	4
30	C42149	LATCH - plate	1
31	C16745	BOLT - shoulder	1
32	195-533	WASHER - 1/2"	1
33	C33709	WHEEL	1
34	131-938	NUT - 3/8" flange lock	1

INGERSOLL



①

! WARNING

FLYING DEBRIS
 OPERATE MOWER ONLY
 WITH DISCHARGE CHUTE
 GUARD/COVER OR COMPLETE
 GRASS CATCHER IN PLACE.
 DEBRIS MAY CAUSE INJURY

⑪

! CAUTION

**KEEP HANDS AND FEET
 CLEAR OF THIS AREA**
**BLADE TILTS WITH
 SPRING TRIP ACTION**
**PINCH POINTS
 COULD CAUSE
 PERSONAL INJURY**

②

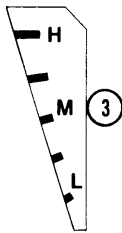
! DANGER

SPINNING BLADE
 SEE OPERATOR'S MANUAL BEFORE
 ATTEMPTING TO CLEAR PLUGGED
 DISCHARGE CHUTE.
 CONTACT WITH BLADE CAN RESULT IN
 SERIOUS INJURY.

! WARNING

ROTATING AUGER ⑥

TO AVOID SEVERE INJURY,
 KEEP HANDS OUT OF AUGER AND DISCHARGE
 CHUTE WHILE ENGINE IS RUNNING



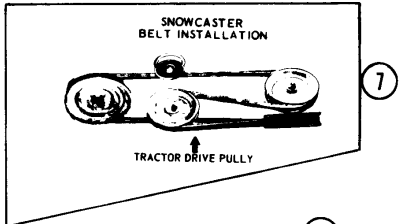
! DANGER

④ **SPINNING BLADE**

KEEP CLEAR
 CONTACT CAN INJURE

⑤

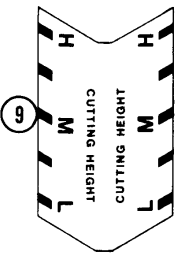
NO STEP



! CAUTION

FLYING DEBRIS ⑬

- DO NOT RAISE COVER WHILE OPERATING.
- PROPERLY INSTALL BAGGER AND CHUTE BEFORE STARTING MOWER. SEE OPERATOR'S MANUAL FOR FURTHER INSTRUCTIONS.



⑧

DECK DRIVE PULLEY
 FLAT IDLER PULLEY
 ATTACHMENT DRIVE PULLEY (TRACTOR)

- SHUT OFF ENGINE. REMOVE KEY AND WAIT FOR ALL MOTION TO STOP BEFORE INSTALLING BELT
- PLACE ATTACHMENT DRIVE IN DISENGAGEMENT POSITION
- POSITION MOWER CUTTING HEIGHT TO LOW
- INSTALL BELT TO DECK PULLEY AND IDLER PULLEY AS SHOWN. ROTATE IDLER PIVOT ARM AND SECURE BELT TO ATTACHMENT DRIVE PULLEY
- DOUBLE CHECK THAT THE BELT IS PROPERLY SEATED IN EACH PULLEY. NO TWIST IN BELT

MOWER, SNOWBLOWER, UTILITY BLADE AND BAGGER

DECALS

REF.	PART NO.	DESCRIPTION	REQ'D
1	C31086	DECAL - "Flying Debris" (RM42Y2, BG42Y2, RM44YR2).....	2
2	C31089	DECAL - "Spinning Blade" (BG42Y2)	1
3	C31090	DECAL - cutting height (RM42Y2)	1
4	C31087	DECAL - "Spinning Blade" (RM42Y2, RM44YR2)	1
5	C12519	DECAL - "No Step" (RM42Y2, RM44YR2)	2
6	321-4199	DECAL - "auger warning" (SB38Y2)	1
7	C16102	DECAL - drive belt (SB38Y2).....	1
8	C27090	DECAL - drive belt (RM44YR2)	1
9	321-6210	DECAL - cutting height (RM44YR2)	1
10	C31989	DECAL - "INGERSOLL" (SB38Y2, UB38Y2).....	1
11	321-4686	DECAL - "Pinch Point" (UB38Y2)	1
12	C31088	DECAL - "CAUTION"	1