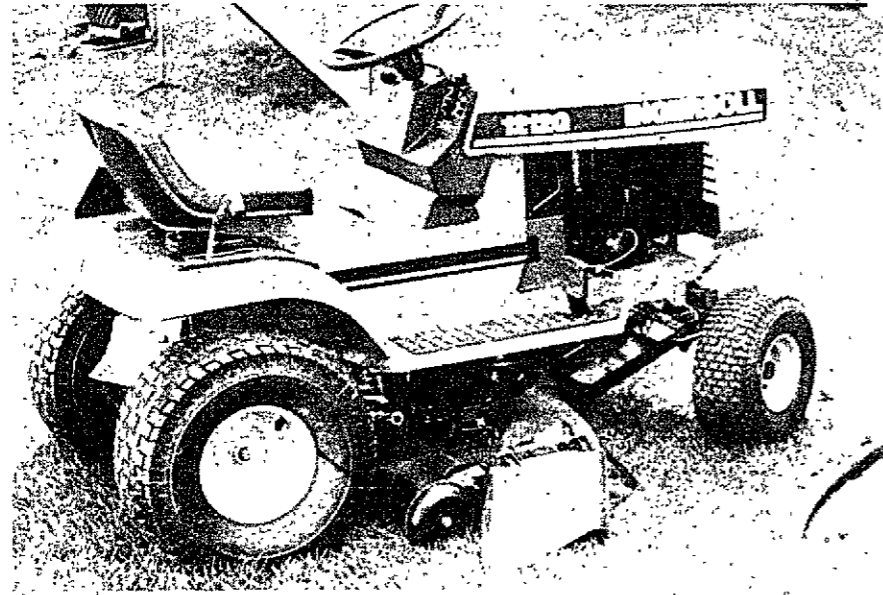


COMPACT TRACTORS  
1212G, 1212H  
Parts Catalog 8-3260

7-92-RP-500-217



PAINT AND OIL

REF.	PART NO.	DESCRIPTION	PAINT	REQ'D
1	C 28849	BLACK - semi - gloss, 12 oz spray (2 per carton)		1
2	C 28850	BLACK - semi - gloss, quart (2 per carton)		1
3	C 28851	BLACK - semi - gloss, heat resistant, 12 oz spray (2 per carton)		1
4	C 28484	POWER RED - gloss, 12 oz spray (2 per carton)		1
5	C 28485	POWER RED - gloss, quart (2 per carton)		1
6	C 30870	SILVER - gloss, 12 oz. spray (2 per carton)		1
7	C 31643	POWER RED - gloss, 1 oz touch up, (1 doz. per carton)		1

REF.	PART NO.	DESCRIPTION	OIL	REQ'D
1	C 32776	OIL - SAE 30, SF, quart (12 per case)		1
2	C 32777	OIL - SAE 5W20, SF, quart (12 per case)		1
3	C 32778	OIL - SAE 20W40, SF, quart (12 per case)		1

## GENERAL INFORMATION

## INDEX

There is an index at the front and rear of this catalog.

The front index is an alphabetical index of the major groups or assemblies.

The rear index is a numerical index of the part numbers and pages on which these numbers are shown.

## ILLUSTRATION

Each illustration in this catalog shows a group of parts or components. These parts and components are aligned approximately as the parts and components on your machine. Each part and component in an illustration has a reference number. These reference numbers are in a list on the page opposite of the illustration. Next to the reference number is the part number, description and required quantity of the part shown in the illustration.

UAR - "Use as required" indicates that the part quantity is variable.

NSS - "Not sold separately" indicates that the part is only available as a component of an assembly or the part must be purchased locally. If the part is an assembly component, the description will be indented under the assembly description in the parts list.

O/L - "Obtain locally"

\*\* - "Footnotes" are added to a part number when more information is needed for identification. They only relate to the part numbers indicated.

## PARTS ORDERS

All orders must include the following information:

1. Correct part number.
2. Complete description of part or component.
3. Total quantity of each part or component.
4. Product model number.
5. All necessary product identification numbers.
6. Method for sending the parts.
7. Complete and correct address.

## CATALOG REVISIONS

As the product changes, new pages will be available for your catalog. A notice will be issued.

**IMPORTANT:** Put all revisions into the catalog as soon as possible.

## RIGHT HAND AND LEFT HAND IDENTIFICATION

The words right hand (RH) and left hand (LH) as used in this catalog indicate the direction while you are in the operator's seat in the normal operating position.

## INDENTED DESCRIPTIONS

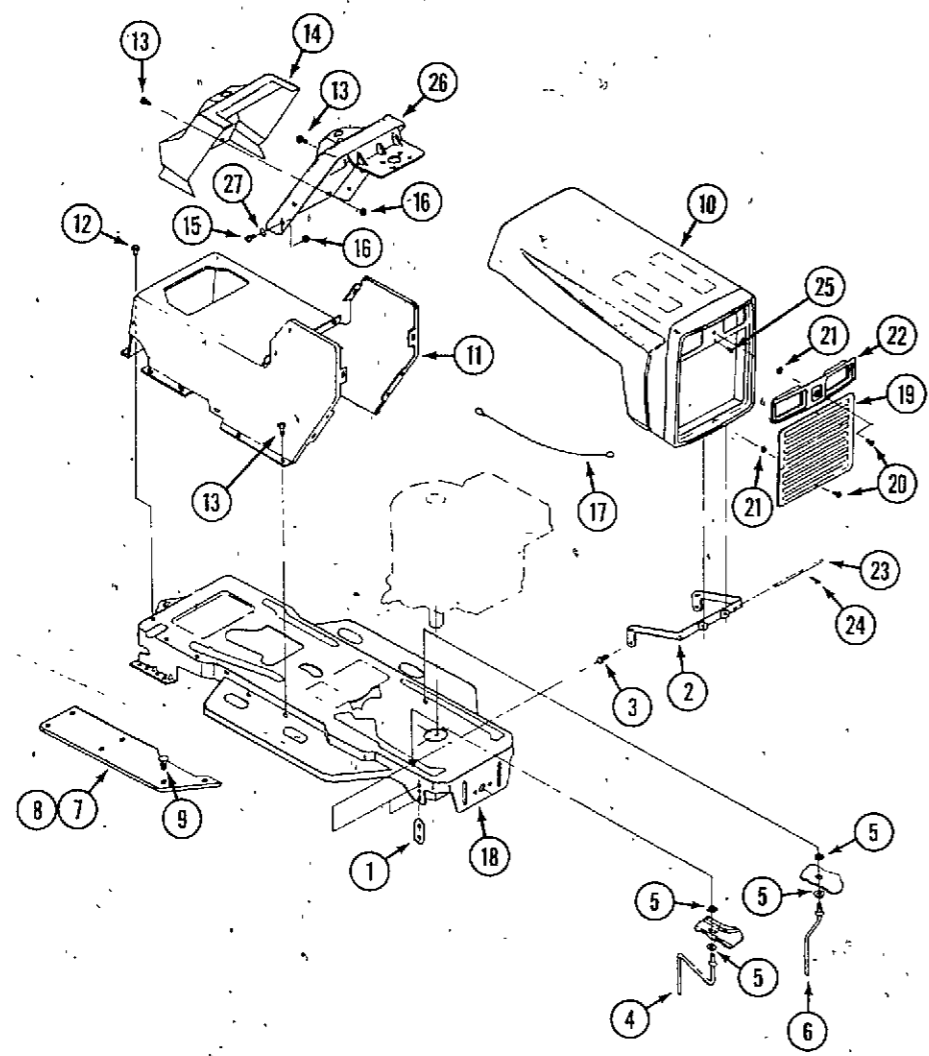
An assembly can have many components. The components of an assembly are indicated by an indented description. The quantity for an indented part is the total needed for that complete assembly. See the example.

REF.	PART NO.	DESCRIPTION	REQ'D
	C 55159	CYLINDER ASSY - rear steering .....	1
28	C 56208	SOCKET ASSY - rear cylinder .....	1
29	C 55956	PLUG - adjusting, socket assy .....	1
30	C 55957	SEAT - socket ball .....	2
31	C 56210	SPRING - socket .....	1
32	C 56209	SEAT - socket spring .....	1
33	G 45175	CLAMP ASSY - socket assy .....	1
	16- 836	BOLT - 1/2" x 2-1/4" N.F. hex .....	1
34	132- 104	PIN - cotter, 3/16" x 3" .....	1
35	C 55889	STUD - ball, socket & cylinder .....	2
36	13- 410	BOLT - 1/4" x 5/8" N.C., hex .....	4
37	92- 4	LOCK WASHER - 1/4" SAE .....	4

## TABLE OF CONTENTS

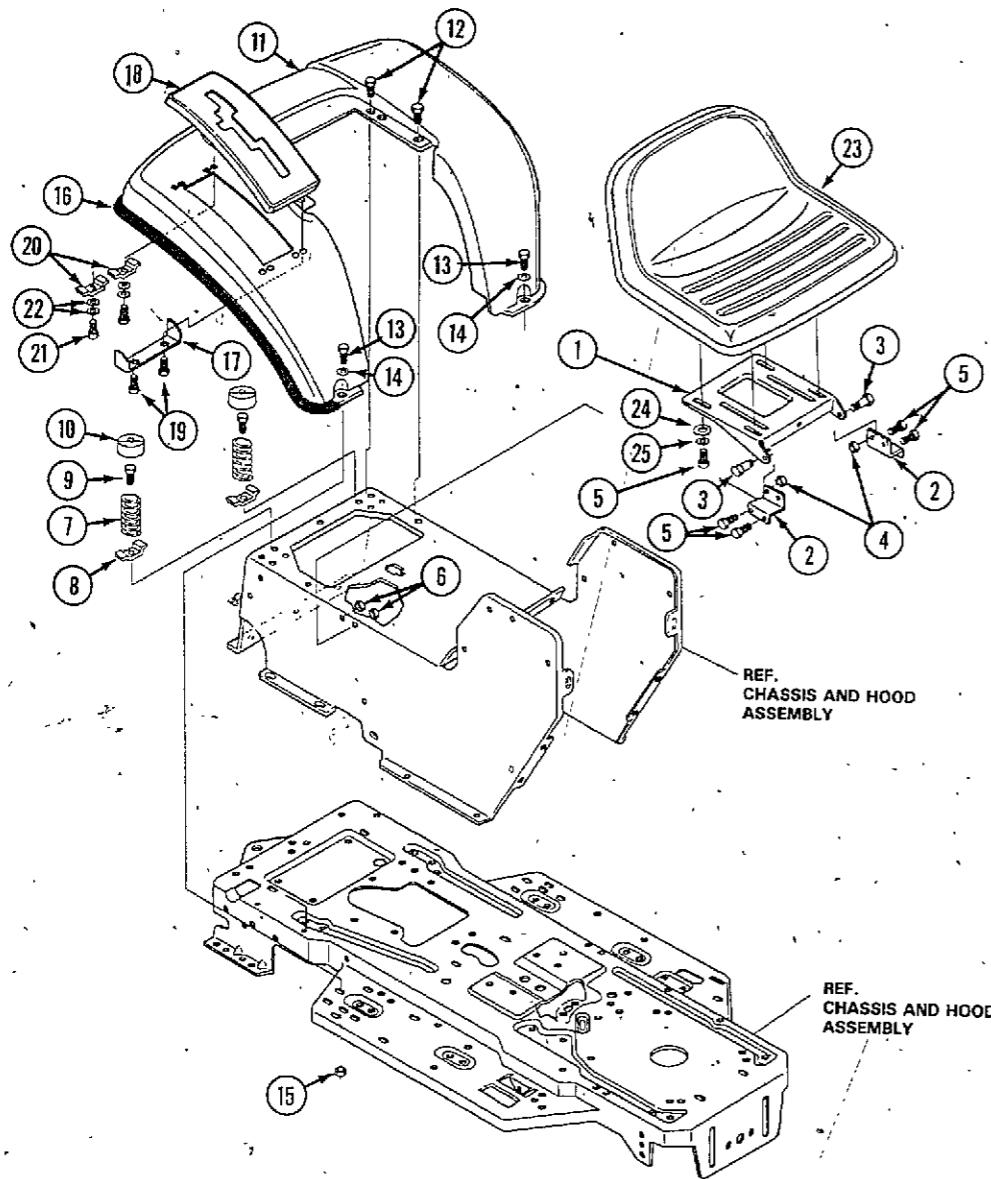
	Page	Grid
Chasis and Hood .....	5	A6
Fender and Seat Plate .....	7	A8
Mower Suspension Assembly .....	9	A10
Transaxle and Gear Shift Lever (1212G) .....	11	A12
Motion Drive Assembly (1212H) .....	13	A14
Clutch, Brake and Rear Wheels .....	15	B2
Steering and Front Axle .....	17	B4
Engine and Control Assembly .....	19	B6
Pre-painted Deck Assembly .....	21	B8
Final Deck Assembly .....	23	B10
Electrical Assembly .....	25	B12
Decals .....	27	B14
Transaxle (1212H) .....	29	C2
Hydrostatic Pump (1212H) .....	31	C4
Transaxle (1212G) .....	33	C6
Engine Block .....	35	C8
Flywheel and Stator .....	37	C10
Counter Weight .....	37	C10
Air Cleaner .....	39	C12
Carburetor .....	39	C12
Governor .....	41	C14
Oil Filler .....	41	C14
Starter .....	43	D2

CHASIS AND HOOD



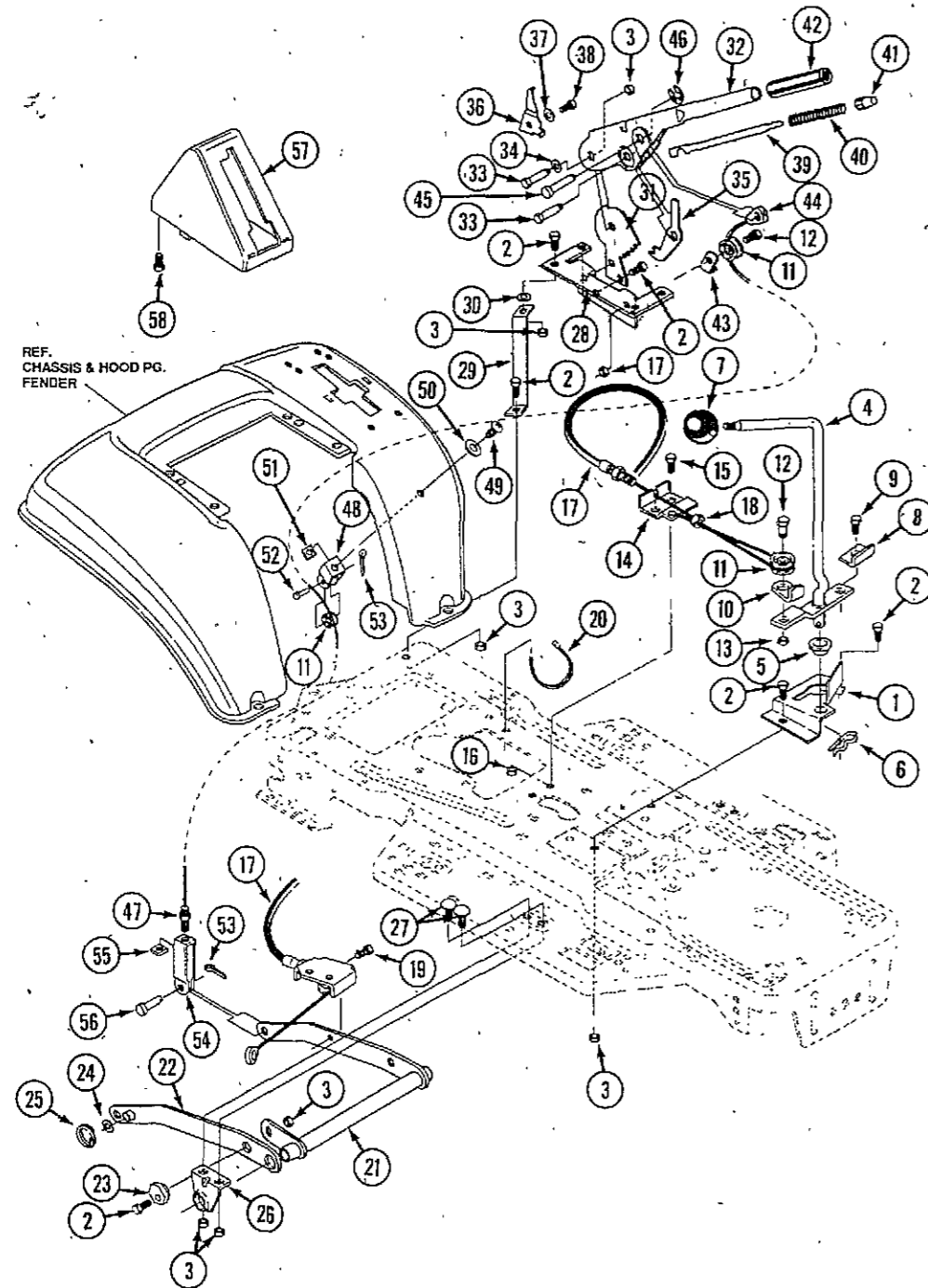
REF.	PART NO.	DESCRIPTION	REQ'D
1	C 40714	PLATE - backing	2
2	C 40715	BRACKET - hood pin	1
3	113- 102	BOLT - 5/16" - 18 x 3/4"	4
4	C 35073	GUIDE - belt	1
5	131- 911	NUT - 5/16" - 18 flange lock	4
6	C 35077	GUIDE - belt	1
7	C 35065	PAD - foot L.H.	1
8	C 35066	PAD - foot R.H.	1
9	C 35067	FASTENER - ratchet	12
10	C 39521	HOOD	1
11	C 40660	CONSOLE	1
12	C 34848	SCREW - 5/16" - 18 x 1/2" tapping	1
13	187- 1036	SCREW - 1/4" - 20 x 1/2" tapping	12
14	C 35377	DASH	1
15	C 34834	SCREW - 1/4" - 20 x 5/8"	4
16	131- 934	NUT - 1/4" - 20 flange lock	6
17	C 37147	LANYARD	1
18	C 39506	FRAME - main	1
19	C 31365	GRILLE	1
20	C 31597	SCREW - 1/4" - 20 x 1/2"	2
21	131- 934	NUT - 1/4" - 20 flange lock	2
22	C 31366	SHROUD - headlight	1
23	C 16362	ROD - hinge	1
24	132- 334	PIN - cotter	1
25	187- 1328	SCREW - #8 - 18 x 3/8"	1
26	C 35082	TOWER	1
27	195- 520	WASHER - 1/4"	2

FENDER AND SEAT PLATE



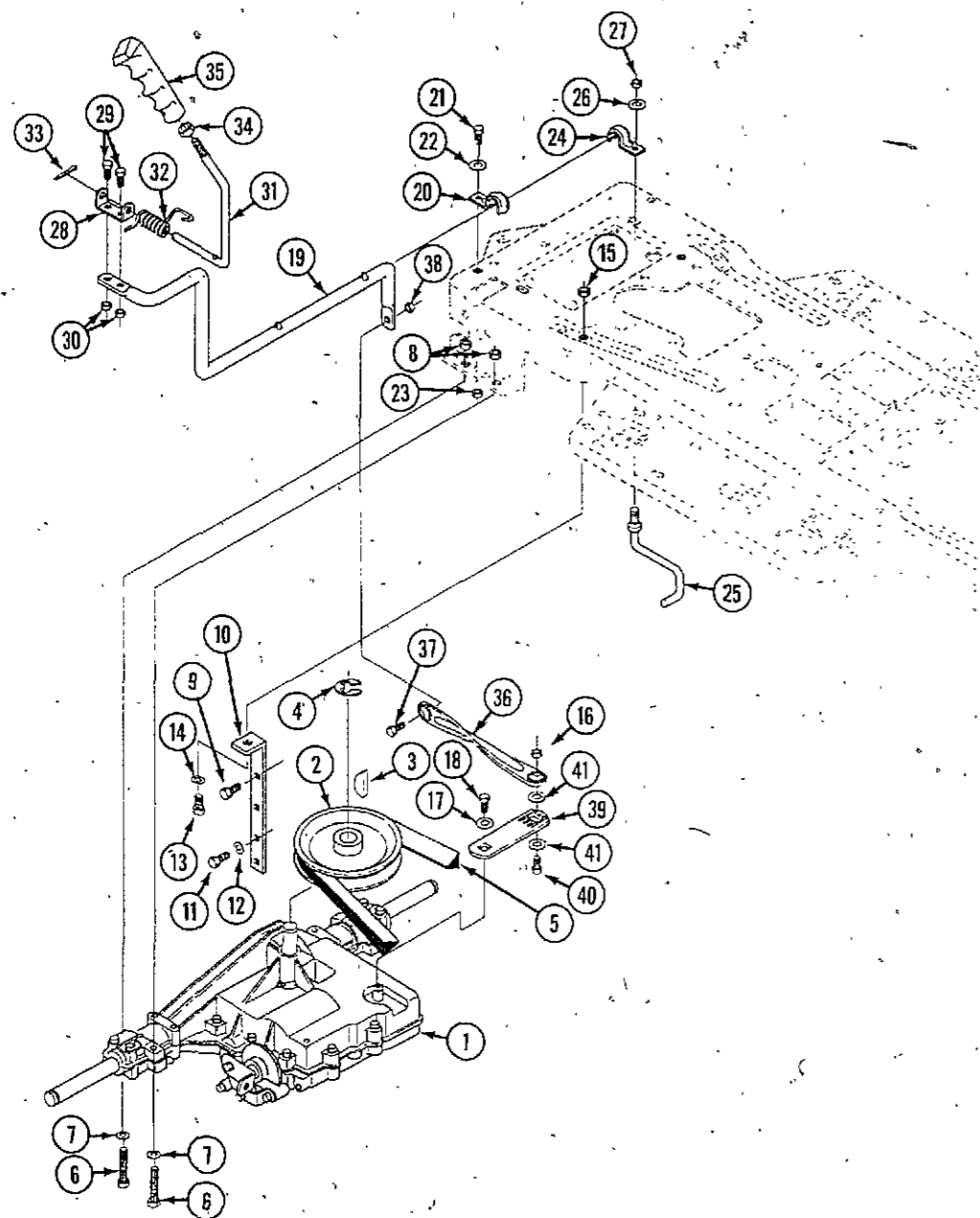
REF.	PART NO.	DESCRIPTION	REQ'D
1	C 40661	PLATE - seat	1
2	C 35667	BRACKET - seat support	2
3	C 34816	BOLT - .437" x .156", 5/16"-18	2
4	131- 176	NUT - 5/16"-18 lock	2
5	113- 102	SCREW - 5/16"-18 x 3/4"	8
6	131- 911	NUT - 5/16"-18 lock	4
7	C 35112	SPRING - seat 2.63" LG, 1.49" OD	2
8	C 35113	CLAMP - spring	2
9	C 34808	SCREW - 1/4"-20 x .75" TAP	2
10	C 35114	COVER - seat spring	2
11	C 35385	FENDER	1
12	187- 1036	SCREW - 1/4"-20 x .50" TAP	4
13	113- 103	SCREW - 5/16"-18 x 1.00"	2
14	195- 102	WASHER - flat 3/8"	4
15	131- 911	NUT - 5/16"-18 lock	2
16	C 35117	TRIM - strip, black 77.5"	1
17	C 35118	BRACKET - cover, fender shift	1
18	C 35119	COVER - plastic (1212H)	1
18	C 35386	COVER - plastic (1212G)	1
19	C 35120	SCREW - 1/4" - 15 x 1/2"	2
20	C 35113	CLAMP - spring 1.17" ID	2
21	C 35120	SCREW - 1/4-15 x .44"/.53"	2
22	195- 518	WASHER - FLAT 1/4"	4
23	C 35667	SEAT	1
24	195- 521	WASHER - 5/16"	4
25	192- 20	LOCK WASHER - 5/16"	4

MOWER SUSPENSION ASSEMBLY



REF.	PART NO.	DESCRIPTION	REQ'D
1	C 35123	BRACKET - clutch, engage lever	1
2	113- 103	SCREW - 5/16" - 18 x 1.00	9
3	131- 911	NUT - 5/16" - 18 flange	16
4	C 35125	LEVER - clutch, attachment	1
5	C 35126	BEARING - .503" ID x .628" OD flange	1
6	C 16450	PIN - hair .091" DIA. x 1.66" LG	1
7	C 35053	KNOB - shift	1
8	C 35127	BRACKET - switch engage	1
9	C 29620	SCREW - 5/16" - 18 x .75 tap	1
10	C 35128	BRACKET - cable retainer	1
11	C 35129	PULLEY - .906" x .305" nylon	3
12	C 35130	BOLT - .375" x .375", 1/4" - 20	2
13	131- 934	NUT - 1/4" - 20 flange lock	1
14	C 35131	BRACKET - frame cable	1
15	113- 3	SCREW - 1/4" - 20 x .75"	2
16	131- 934	NUT - 1/4" - 20 lock	3
17	C 35133	CABLE - blade engage	1
18	C 35134	NUT - 1/4" - 28 Jam	1
19	C 29620	SCREW - 5/16" - 18 x .75" tap	1
20	C 35334	TIE - cable, black nylon	1
21	C 35388	BRACKET - rear lift	1
22	C 35137	LINK - right side	1
23	C 35139	NUT - adjusting	1
24	195- 533	WASHER - flat .53" x 1.06" x .095"	2
25	C 28105	RING - retaining	2
26	C 35140	BRACKET - suspension, rear	2
27	111- 202	BOLT - 5/16" - 18 x .63" carriage	4
28	C 35141	BRACKET - height adjust support	1
29	C 35142	BRACE - fender	1
30	195- 521	WASHER - flat .333" x .87" x .119"	1
31	C 35143	QUADRANT - height adjust	1
32	C 35144	HANDLE - lift	1
33	C 35145	BOLT - 5/16" - 18	2
34	C 28806	WASHER - flat .506" x .75" x .024"	1
35	C 35147	PAWL - height adjust	1
36	C 35148	POINTER	1
37	193- 6	WASHER - .195" x .41" x .03" lock	1
38	C 34968	SCREW - #8 - 32 x .38"	1
39	C 35150	ROD - actuator, short	1
40	C 35151	SPRING - height adjust	1
41	C 35152	KNOB - height adjust push button	1
42	C 35153	GRIP - .750" OD w/hole	1
43	C 35154	BRACKET - cable retaining	1
44	C 34823	CABLE - lift 21.70"	1
45	C 35156	PIN - clevis .310" dia. x .475" LG	1
46	C 35157	RING - retaining	1
47	129- 101	NUT - 1/4" - 20	1
48	C 35159	CLEVIS	1
49	C 35160	SCREW - 5/16" - 18 x .56"	1
50	C 35161	WASHER - .344" ID x 1.5" OD	1
51	C 35162	NUT - 5/16" - 18 sq.	1
52	C 35163	PIN - clevis .38" dia. x 1.00" lg	1
53	132- 329	PIN - cotter	1
54	C 34825	CLEVIS - lift cable	1
55	C 34824	NUT - 1/4" - 20 square	1
56	C 34826	PIN clevis .312" x .812"	1
57	C 35165	LIFT COVER	1
58	C 35166	SCREW - #10 x .75"	3

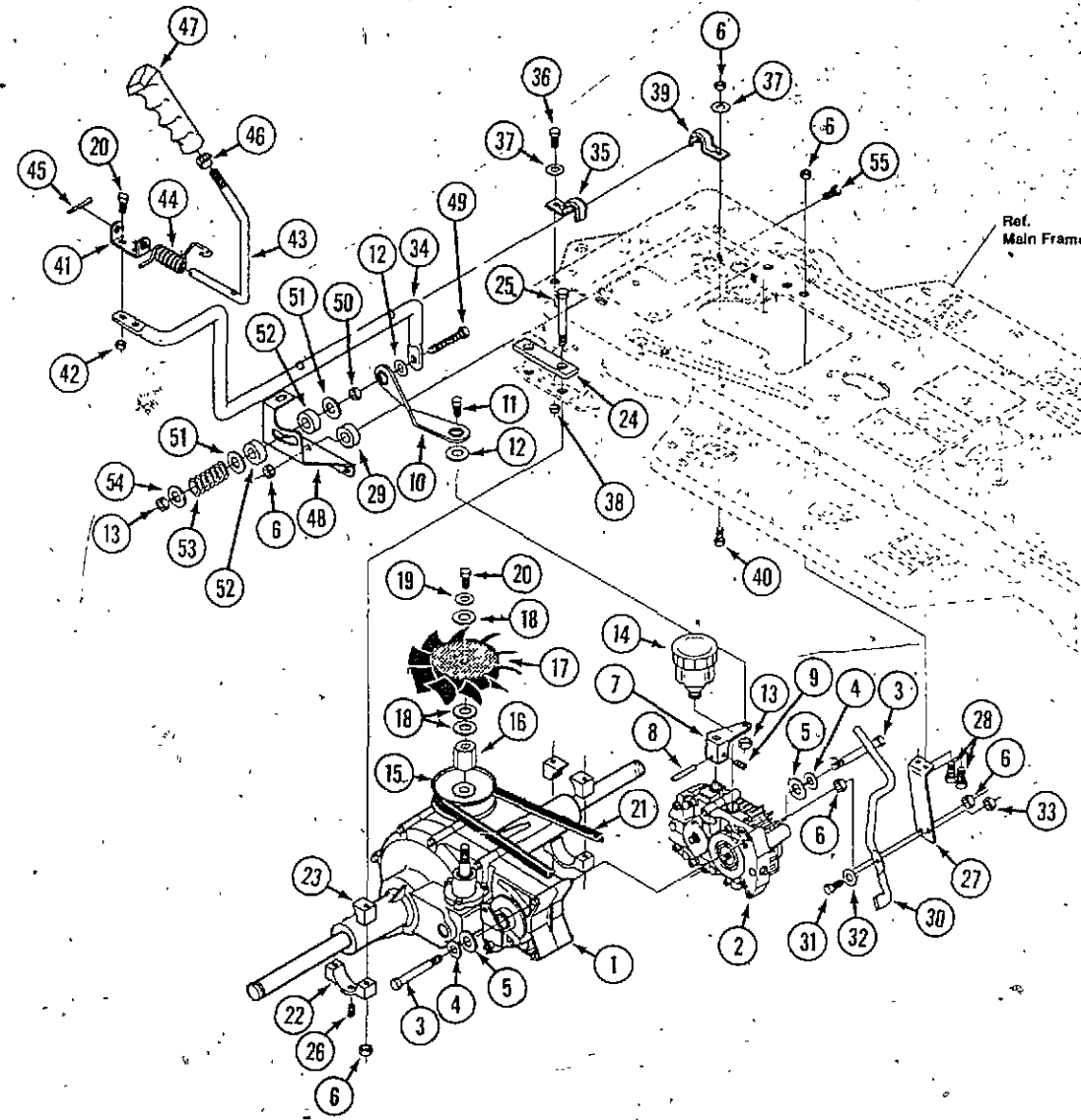
TRANSAXLE AND GEAR SHIFT LEVER



REF.	PART NO.	DESCRIPTION	REQ'D
1	C 40733*	TRANSAXLE	1
2	C 35552	PULLEY	1
3	C 34909	KEY - WDRF 606 .750" x .187" x .312"	1
4	C 34874	RING - retaining	1
5	C 35233	BELT - drive	1
6	113- 110	SCREW - 5/16" - 18 x 2.25"	4
7	195- 521	WASHER - flat 5/16"	4
8	131- 911	NUT - 5/16" - 18 lock	4
9	C 35264	SCREW - 3/8" - 16 x 1.25" tap	1
10	C 35235	BRACKET - stabilizer	1
11	C 34800	SCREW - 5/16" 18 x .75" tap	2
12	192- 20	LOCKWASHER - 5/16"	2
13	113- 103	SCREW - 5/16" - 18 x 1.00"	1
14	195- 521	WASHER - flat .344" x .69" x .065"	1
15	131- 911	NUT - 5/16" - 18 lock	1
16	131- 1216	NUT - 3/8" - 16 lock	1
17	C 34886	WASHER - .750" x .250"	1
18	C 34887	SCREW - 1/4" - 28 x .75"	1
19	C 35238	LEVER - shift, lower	1
20	C 35239	CLIP - shift lever	1
21	113- 103	SCREW - 5/16" - 18 x 1"	1
22	195- 104	WASHER - flat .391" x 1.00" x .125"	1
23	131- 911	NUT - 5/16" - 18 lock	1
24	C 35239	CLIP - shift lever	1
25	C 35241	GUIDE - belt 5/16" - 18 THD	1
26	195- 104	WASHER - flat .391" x 1.00" x .125"	1
27	131- 911	NUT - 5/16" - 18 lock	1
28	C 35242	BRACKET - pivot	1
29	113- 2	SCREW - 1/4" - 20 x .62"	2
30	131- 934	NUT - 1/4" 20 lock	2
31	C 35244	LEVER - shift upper	1
32	C 35426	SPRING - .56" x .95 x .095 torsion	1
33	132- 310	PIN - cotter .125" dia. x 1.00" lg	1
34	129- 105	NUT - 1/2" - 13 hex jam	1
35	C 35247	HANDLE - 1/2" - 13 molded	1
36	C 35248	LINK - tie rod shifter	1
37	113- 208	SCREW - 3/8" - 16 x 1.25"	1
38	131- 1216	NUT - 3/8" - 16 lock	1
39	C 35250	BRACKET - shift	1
40	113- 208	SCREW - 3/8" - 16 x 1.25"	1
41	195- 103	WASHER - flat .406" x .81" x .065"	2

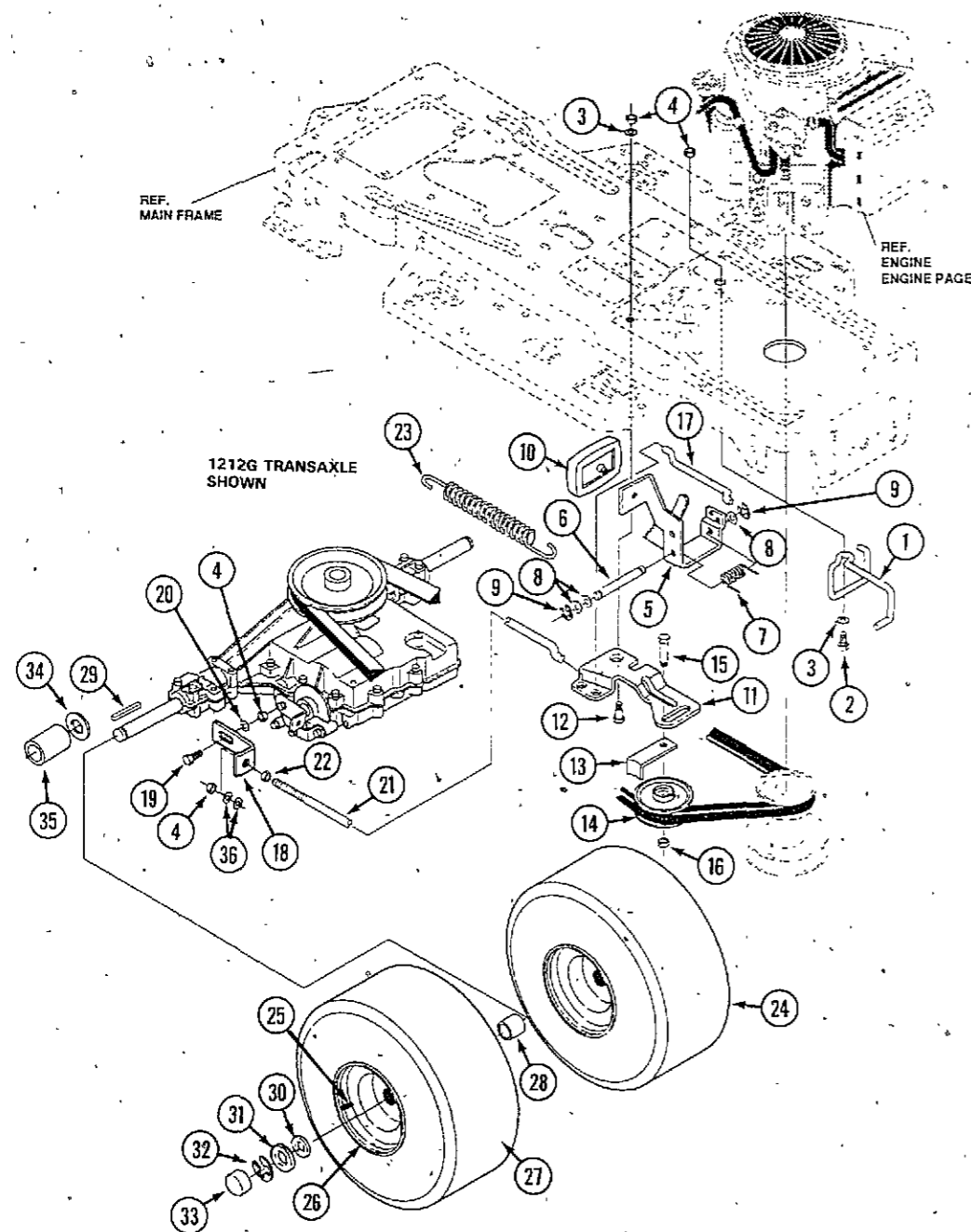
\*See Transaxle Section for Service Parts

MOTION DRIVE ASSEMBLY



REF.	PART NO.	DESCRIPTION	REQ'D
1	C 40675	TRANSAXLE - see page 29 for repairs	1
2	C 35405*	HYDROSTATIC PUMP - see page 31 for repairs	1
3	C 35406	SCREW - 5/16" - 18 x 4.50"	4
4	192- 20	WASHER - 5/16" lock	4
5	195- 521	WASHER - flat 5/16"	4
6	131- 176	NUT - 5/16" - 18 lock	3
7	C 35407	ARM - speed control	1
8	138- 2071	PIN - spring, .187" dia. x .88" lg.	1
9	178- 860	SCREW - 1/4" - 20 x .38" set	1
10	C 35248	LINK - shift, hydro	1
11	113- 207	SCREW - 3/8" - 16 x 1.25"	1
12	192- 21	WASHER - .393" x .68" x .10" lock	1
13	131- 1352	NUT - 3/8" - 16 lock	1
14	C 35411	RESERVOIR - hydro	1
15	C 40894	DIAPHRAGM - reservoir (not shown)	1
16	C 35412	PULLEY - hydro	1
17	C 35413	NUT - pulley 1/2" - 20 and 1/4" - 20	1
18	C 35414	FAN - hydro 7.00" dia. - 10 blades	1
19	129- 2175	WASHER - .28" x 1.38" x .07"	3
20	192- 19	WASHER - .263" x .49" x .07" lock	1
21	113- 2	SCREW - 1/4" - 20 x .62"	1
22	C 35416	BELT - "V" 4L 80.16"	1
23	C 35417	BLOCK - mounting, lower	2
24	C 35418	BLOCK - mounting, upper	4
25	C 35419	PLATE - guide	2
26	C 35420	SCREW - 5/16" - 18 x 2.75"	4
27	C 35421	SCREW - #10 - 32 x .25"	2
28	C 35422	BRACKET - stabilizer	1
29	113- 103	SCREW - 5/16" - 18 x 1.00"	2
30	C 35432	SPACER - .344" x 1.00" x .500"	2
31	C 35423	ROD - dump valve	1
32	C 35424	BOLT - .250" x .312", 5/16" - 18	1
33	C 34997	WASHER - .39" ID x 1.25" OD x .07" spring	1
34	131- 1102	NUT - 1/4" - 20 lock	1
35	C 40676	LEVER - shift	1
36	C 35239	CLIP - shift lever	1
37	113- 103	SCREW - 5/16" - 18 x .75"	1
38	195- 104	WASHER - .391" x 1.00" x .125"	1
39	131- 911	NUT - 5/16" - 18 lock	1
40	C 35239	CLIP - shift lever	1
41	113- 103	SCREW - 5/16" - 18 lock	1
42	C 35242	BRACKET - pivot	1
43	131- 934	NUT - 1/4" - 20 lock	2
44	C 40677	LEVER - shift, upper	1
45	C 40678	SPRING - .56" x .95" x .095" torsion	1
46	132- 310	PIN - cotter .125" dia. x 1.00" lg.	1
47	129- 105	NUT - 1/2" - 13 jam	1
48	C 35247	HANDLE - molded, black	1
49	C 35427	QUADRANT - speed control	1
50	C 35428	SCREW - 3/8" - 16 x 3.00"	1
51	131- 938	NUT - 3/8" flange	1
52	C 34939	WASHER - .390" x 1.25" x .119"	4
53	C 35429	WASHER	2
54	C 35430	SPRING	1
55	C 34904	WASHER - .406" x .73" x .063"	1
	113- 104	SCREW - 5/16" - 18 x 1.25"	2

CLUTCH BRAKE AND REAR WHEELS

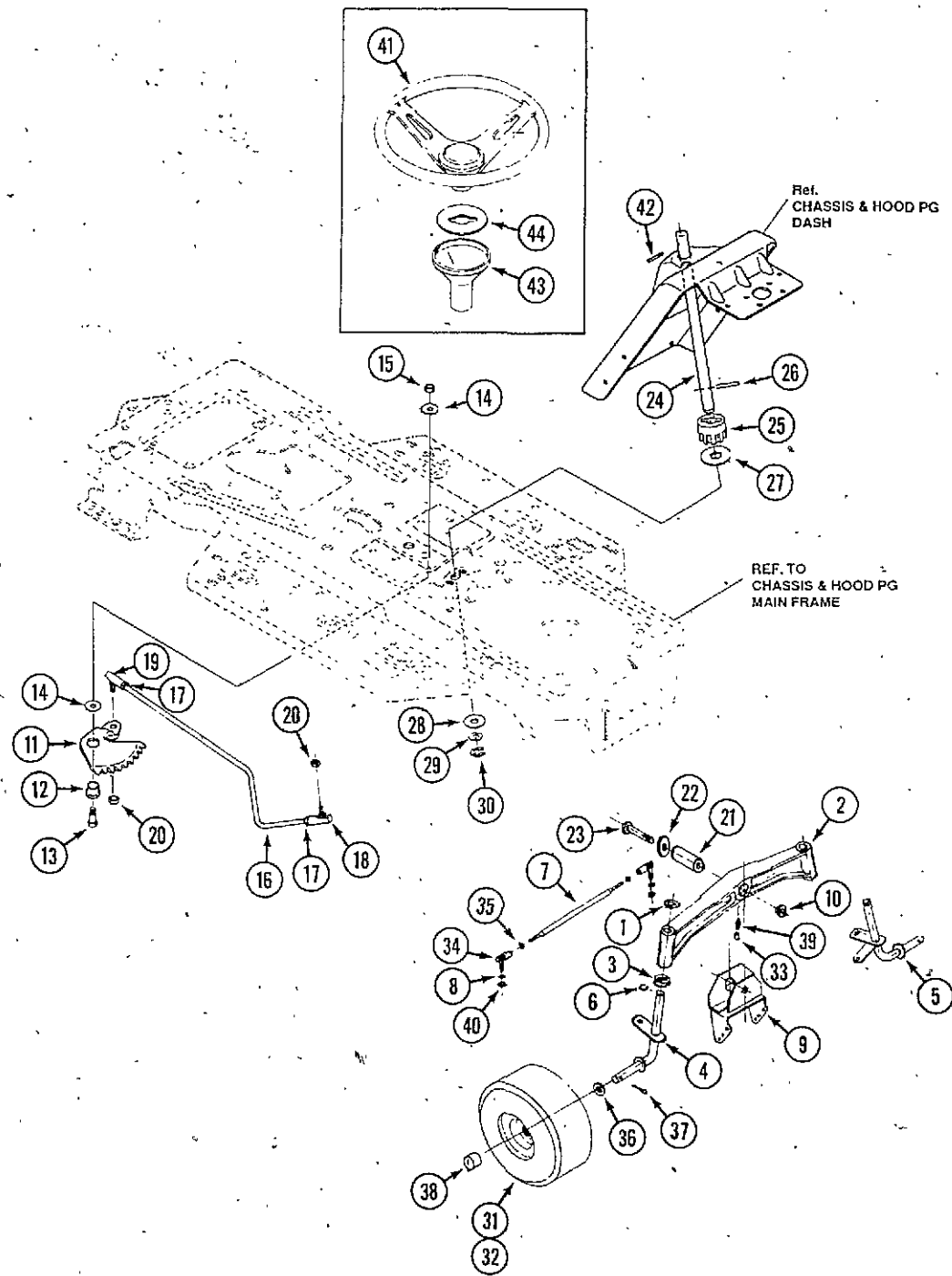


REF.	PART NO.	DESCRIPTION	REQ'D
1	C 35433	GUIDE - belt and drag link	1
2	113- 103	SCREW - 5/16" - 18 x 1.00"	1
3	195- 521	WASHER - flat 5/16"	2
4	131- 176	NUT - 5/16" - 18 lock	4
5	C 35254	PEDAL - brake, clutch	1
6	C 34980	ROD - pivot .50 OD	1
7	C 35255	SPRING - brake pedal	1
8	195- 533	WASHER - flat .504" x .75" x .059"	3
9	C 34979	RING - retaining	2
10	C 35256	PAD - clutch brake	1
11	C 35257	ARM - idler, traction drive	1
12	C 35258	BOLT - .625" x .135", 5/16" - 18	1
13	C 34903	RETAINER - belt	1
14	C 34902	PULLEY - idler "V" 4L 3.06" x .62"	1
15	111- 330	BOLT - 3/8" - 16 x 1-3/4" carriage	1
16	131- 1216	NUT - 3/8" - 16 lock	1
17	C 35259	ROD - clutch	1
18	C 34993	BRACKET - brake rod	1
19	C 34816	BOLT - 5/16" - 18	1
20	C 30649	WASHER - flat .333" x .87" x .119"	1
21	C 35555	ROD - brake	1
22	131- 911	NUT - 5/16" - 18 (1212G)	1
23	C 35435	SPRING - clutch	1
24	*	TIRE & RIM - 20 x 10-8	2
25	C 34920	VALVE - air	1
26	C 35438	RIM - wheel	2
27	**	TIRE	2
28	C 35437	SPACER	2
29	C 40664	KEY	2
30	C 28226	WASHER - flat .755" x 1.31" x .075"	2
31	C 28972	WASHER - flat .755" x 1.53" x .07"	2
32	C 27739	RING - retaining	2
33	C 34918	CAP - hub	2
34	C 34916	WASHER - 3/4" x 1-1/2" (1212H)	2
35	C 35436	SPACER - sleeve 3/4" x 1-1/4" (1212H)	2
36	C 34876	WASHER - spacer (1212H)	2

\* Order Individual Parts.  
 \*\* Order Tires From Your Local Tire Dealer



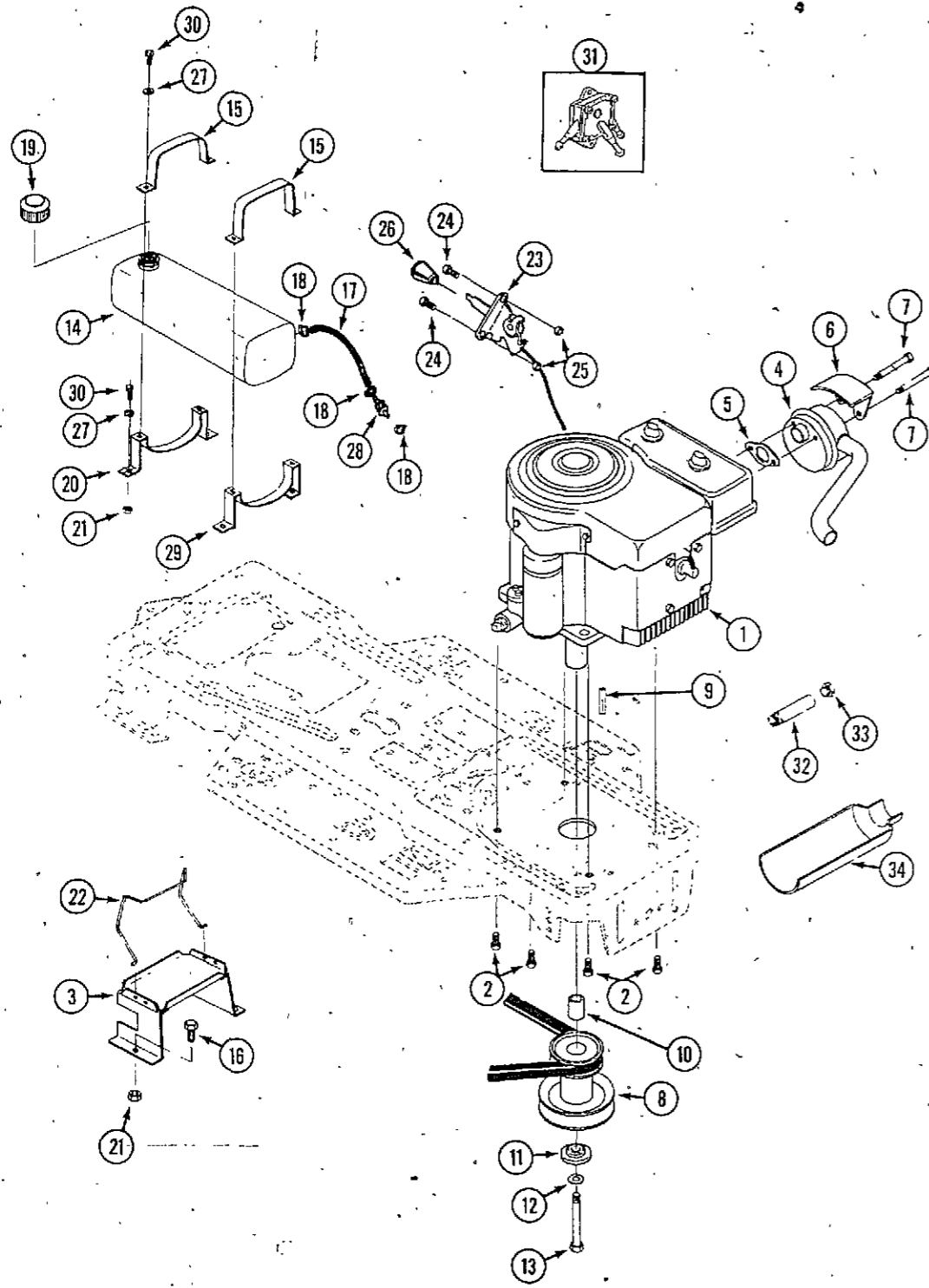
STEERING AND FRONT AXLE



REF.	PART NO.	DESCRIPTION	REQ'D
1	195- 545	WASHER	2
2	C 18812	AXLE - front	1
3	C 11906	WASHER - thrust	4
4	C 39496	SPINDLE - R.H.	1
5	C 40702	SPINDLE L.H.	1
6	C 28232	RING - retaining	2
7	C 40658	TIE ROD	1
8	192- 23	WASHER - 1/2" lock	2
9	C 39502	BRACKET - pivot	1
10	C 39497	NUT - axle pivot	1
11	C 35393	GEAR - sector, steering	1
12	C 35394	BEARING - flange	1
13	113- 412	SCREW - 1/2" 13 x 1-3/4"	1
14	C 35396	WASHER - flat .515" x 1.38" x .119"	2
15	131- 1182	NUT - 1/2" - 13 lock	1
16	C 40705	LINK - steering	1
17	129- 163	NUT - 3/8" - 24	2
18	C 35183	BALL JOINT - short stud 3/8"	1
19	C 35398	BALL JOINT - long stud 3/8"	1
20	131- 938	NUT - 3/8" - 24 lock	1
21	C 39498	PIN - axle pivot	1
22	C 39499	WASHER - axle pivot	1
23	113- 447	BOLT - 1/2" - 13 x 3-1/2"	1
24	C 35399	SHAFT - steering	1
25	C 35400	PINION - steering	1
26	C 35401	PIN - dowel .2500" OD x 1.75"	1
27	C 35402	BEARING - flanged	1
28	C 35403	WASHER - formed 1.135" x 1.53" x .12"	1
29	C 35207	WASHER - flat .765" x 1.25" x .042"	1
30	C 27739	RING - retaining	1
31	*	TIRE & RIM - 15 x 6.0 x 6 silver	2
32	**	TIRE	1
	C 34920	VALVE STEM	1
	C 35193	WHEEL - includes bearings	1
	C 35404	BEARING - flanged 1.38" OD x .753" ID	2
33	C 13106	COVER - lubrication fitting	3
34	C 12102	BALLJOINT - R.H. thread	1
34	C 13605	BALLJOINT - L.H. thread	1
35	129- 165	NUT - 1/2" N.F R.H. thread	1
35	129- 365	NUT - 1/2" N.F. L.H. thread	1
36	C 28226	WASHER - flat	UAR
37	132- 311	PIN - cotter	2
38	C 26526	CAP - 1.500" ID x 7/8" LG HUB	2
39	219- 17	FITTING - lubrication	3
40	129- 165	NUT - 1/2" N.F. R.H. thread	2
41	C 40666	WHEEL - steering	1
42	138- 143	PIN - roll 1/4" x 2"	1
43	C 40654	BOOT - steering shaft	1
44	C 40655	INSERT - boot	1

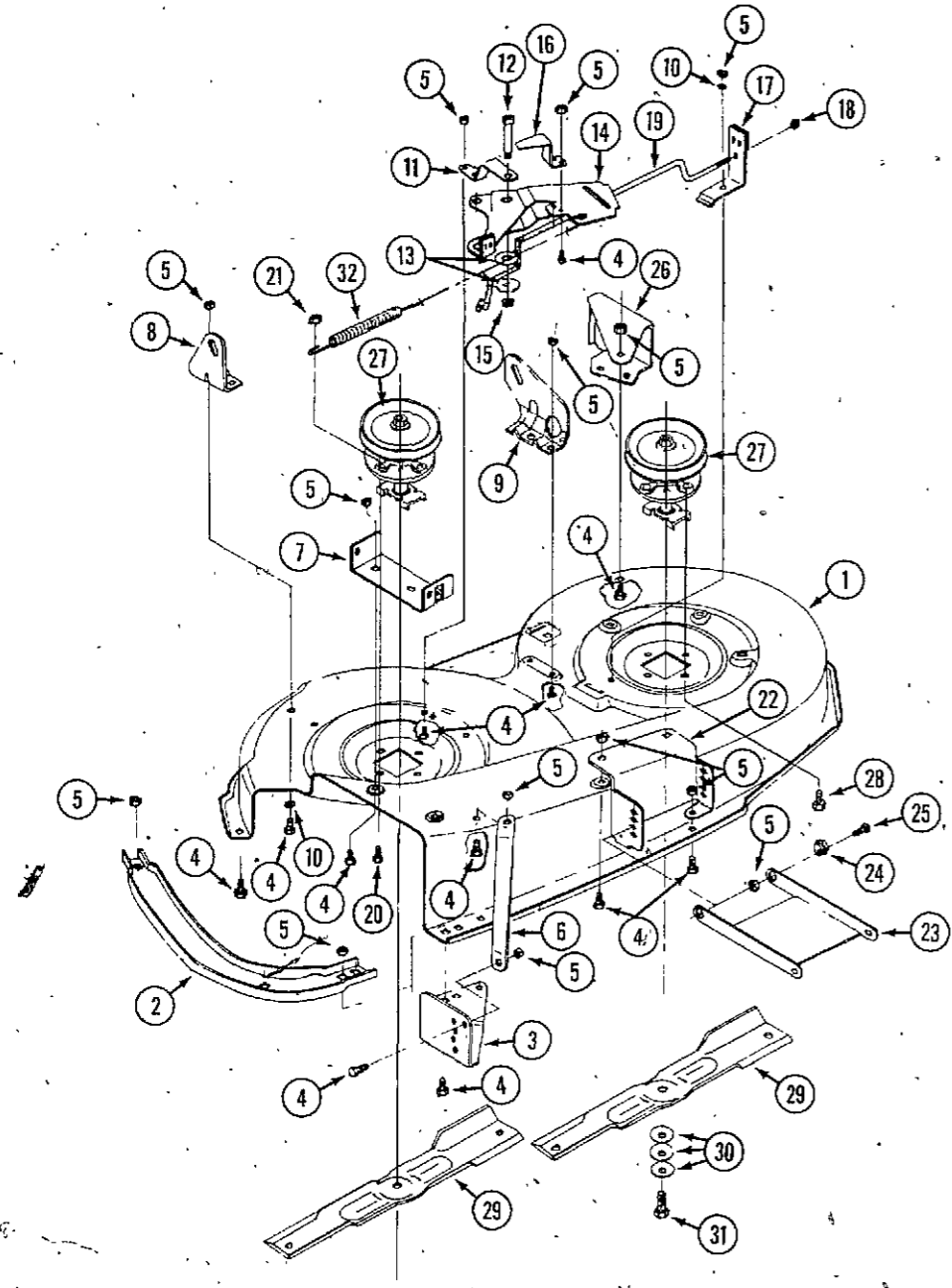
\*Order individual parts.  
 \*\*Order tires at your local tire dealer.

ENGINE AND CONTROL ASSEMBLY



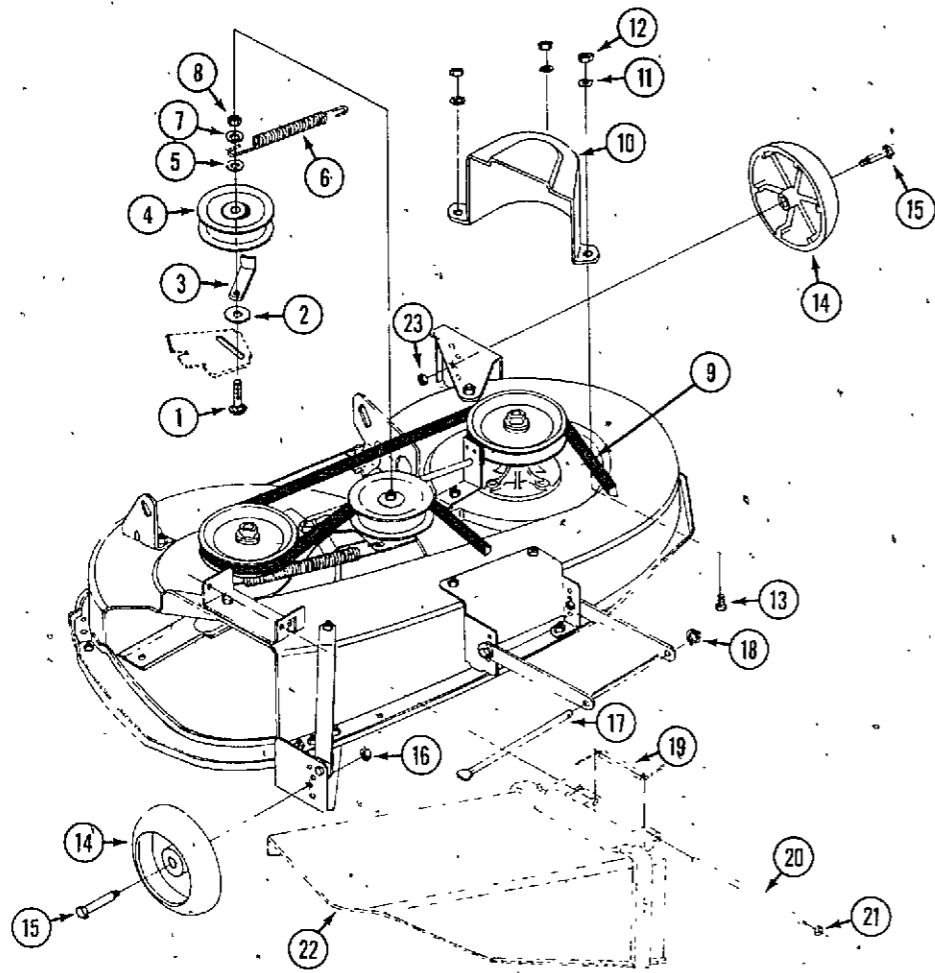
REF.	PART NO.	DESCRIPTION	REQ'D
1	C 37477	ENGINE - 12 HP B&S I/C 283707 type 0126	1
2	C 33644	SCREW - 3/8" - 16 x 1.25" TAP	4
3	C 39514	BRACKET - battery	1
4	C 35439	MUFFLER - w/tube	1
5	C 35440	GASKET - muffler	1
6	C 35441	SHIELD - heat	1
7	C 35442	SCREW - 5/16" - 18 x 3.50"	2
8	C 35443	PULLEY	1
9	C 35278	KEY - square .250" sq. x 5.00" LG	1
10	C 35279	SPACER - 1.01" x 1.484" engine pulley	1
11	C 34925	WASHER - .980" ID x 1.38" OD x .437" pilot	1
12	193- 31	WASHER - 7/16" lock	1
13	C 35280	SCREW - 7/16" - 20 x 5.00"	1
14	C 37472	TANK - fuel	1
15	C 37481	STRAP - fuel tank	1
16	113- 102	BOLT - 5/16" - 18 x 3/4"	2
17	NSS	FUEL LINE (use C28937 cut to length)	1
18	C 32376	CLAMP - fuel line	4
19	C 37094	CAP - fuel tank	1
20	C 37482	BRACKET - fuel tank, rear	1
21	131- 911	NUT - 5/16" - 18 flange lock	6
22	C 42363	RETAINER - battery	1
23	C 35447	CONTROL - throttle	1
24	C 35289	SCREW - #10-24 x .63"	2
25	C 35290	NUT - #10 - 24 hex keps	2
26	C 35291	KNOB - round throttle	1
27	195- 521	WASHER - 5/16"	8
28	C 31978	FILTER - fuel	1
29	C 40737	BRACKET - fuel tank, front	1
30	113- 103	BOLT - 5/16" - 18 x 1"	8
31	C 34300	PUMP - fuel	1
32	C 37148	NIPPLE - pipe	1
33	218- 5154	PLUG - oil drain	1
34	C 35369	TROUGH - oil drain	1

PRE-PAINTED DECK ASSEMBLY



REF.	PART NO.	DESCRIPTION	REQ'D
1	C 42123	DECK - mower 40"	1
2	C 35294	GUARD - toe	1
3	C 35313	BRACKET - gage wheel R.H.	1
4	113- 118	BOLT - 5/16" - 18 x 5/8"	27
5	131- 911	NUT - 5/16" - 18 flange lock	29
6	C 35314	BRACKET - stabilizer	1
7	C 35296	BRACKET - chute mount	1
8	C 35297	BRACKET - lift R.H. rear	1
9	C 42124	BRACKET - lift L.H. rear	1
10	195- 521	WASHER - 5/16"	10
11	C 42125	BRACE - idler	1
12	C 35318	BOLT - shoulder 1/2" x 2.15"	1
13	C 35319	WASHER - .391"	2
14	C 42126	ARM - idler	1
15	131- 938	NUT - 3/8" - 16 flange lock	1
16	C 42127	BRACKET - extension, idler	1
17	C 42128	BRAKE - blade	1
18	131- 1102	NUT - 1/4" - 20 lock	1
19	C 42129	ROD - brake	1
20	C 35307	SCREW - 5/16" - 18 x 1-3/8"	1
21	131- 176	NUT - 5/16" - 18 lock	1
22	C 42130	BRACKET - front deck	1
23	C 35309	BRACKET - link	1
24	C 35139	NUT - adjusting	2
25	113- 103	BOLT - 5/16" - 18 x 1"	2
26	C 35312	BRACKET - gage wheel L.H.	1
27	C 35300	SPINDLE ASSEMBLY - see page 23 for service	2
28	C 34992	SCREW - 5/16" - 18 x 7/8" tapping	7
29	C 42132	BLADE	2
30	C 34997	WASHER - bellville	6
31	C 34998	BOLT - 3/8" - 24 x 1"	2
32	C 34901	SPRING - tension	1

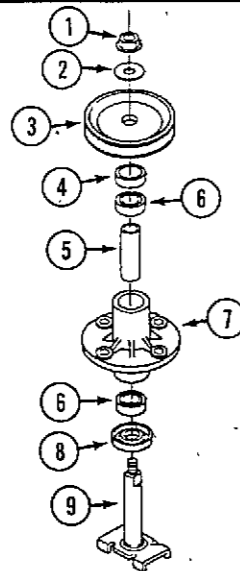
**FINAL DECK ASSEMBLY**



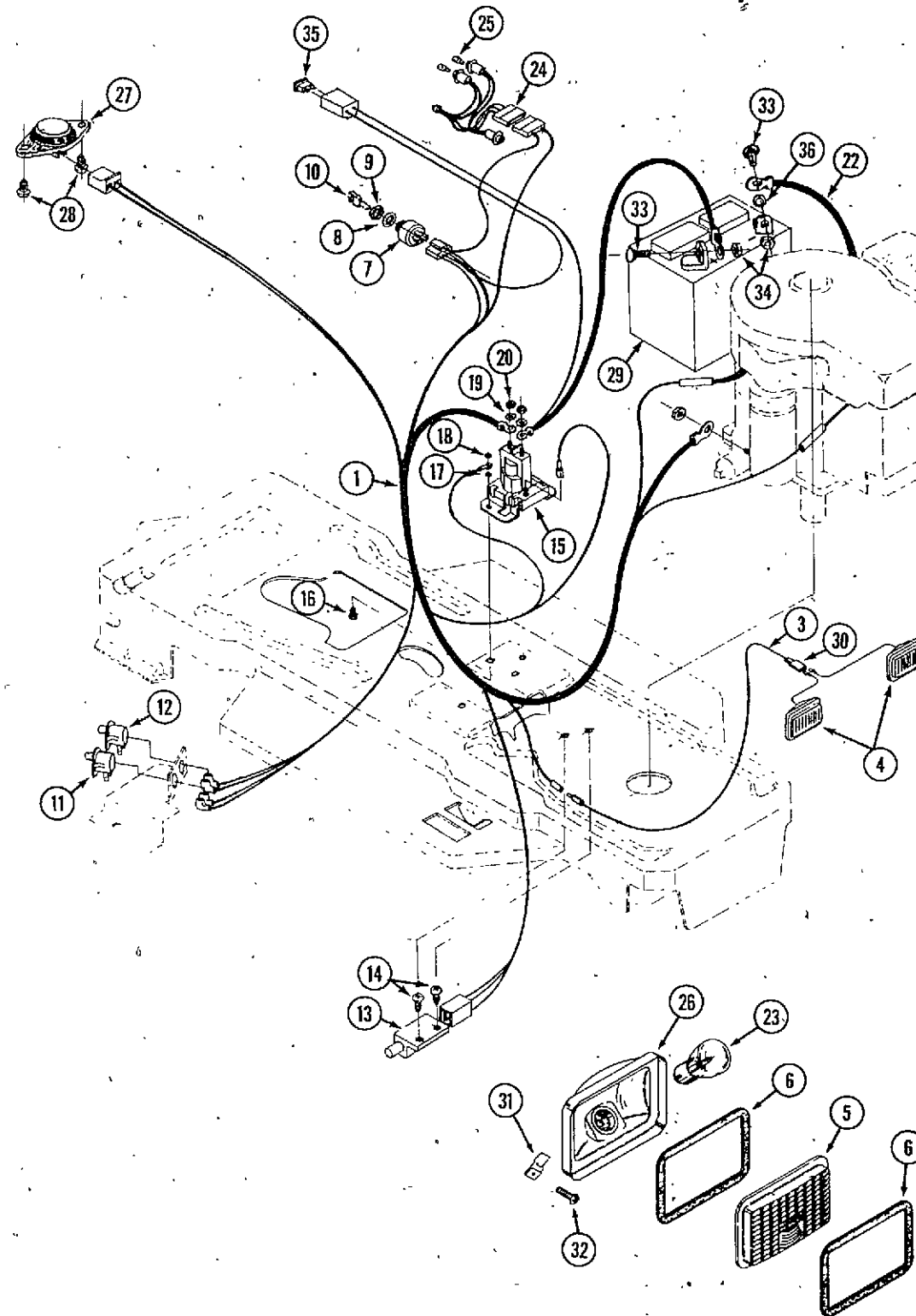
REF.	PART NO.	DESCRIPTION	REQ'D
1	111- 323	BOLT - 3/8" - 16 x 2-1/4" carriage	1
2	195- 2029	WASHER - .438" x 1.25"	1
3	C 35457	RETAINER - belt	1
4	C 35458	PULLEY - idler	1
5	C 35319	WASHER - .391" x 1" x .209"	1
6	C 35324	SPRING - tension	1
7	195- 104	WASHER - .438" x 1"	1
8	131- 1216	NUT - 3/8" - 16 lock	1
9	C 42133	BELT - 81"	1
10	C 35466	GUARD - belt	1
11	195- 521	WASHER - 5/16"	3
12	131- 176	NUT - 5/16" - 18 lock	3
13	113- 118	BOLT - 5/16" - 18 x .62"	3
14	C 35373	WHEEL - deck	2
15	C 34828	BOLT - shoulder	2
16	131- 938	NUT - 3/8" - 16 flange lock	2
17	C 35316	ROD - deck hitch	1
18	C 28105	RING - retaining	1
19	C 34839	SPRING - torsion	1
20	C 35370	ROD - pivot	1
21	C 35371	NUT - push	2
22	C 35372	CHUTE - deflector	1
23	131- 938	NUT - 3/8" flange	2

**SPINDLE ASSEMBLY**

1	C 34991	NUT - 7/16" - 20 flange lock	1
2	C 34990	WASHER - special	1
3	C 34989	PULLEY - spindle	1
4	C 35304	SPACER - pulley	1
5	C 35303	SPACER - bearing	1
6	C 34983	BEARING - spindle	2
7	C 35302	HOUSING - spindle	1
8	C 34985	SHIELD - dust	1
9	C 35301	SHAFT - spindle	1

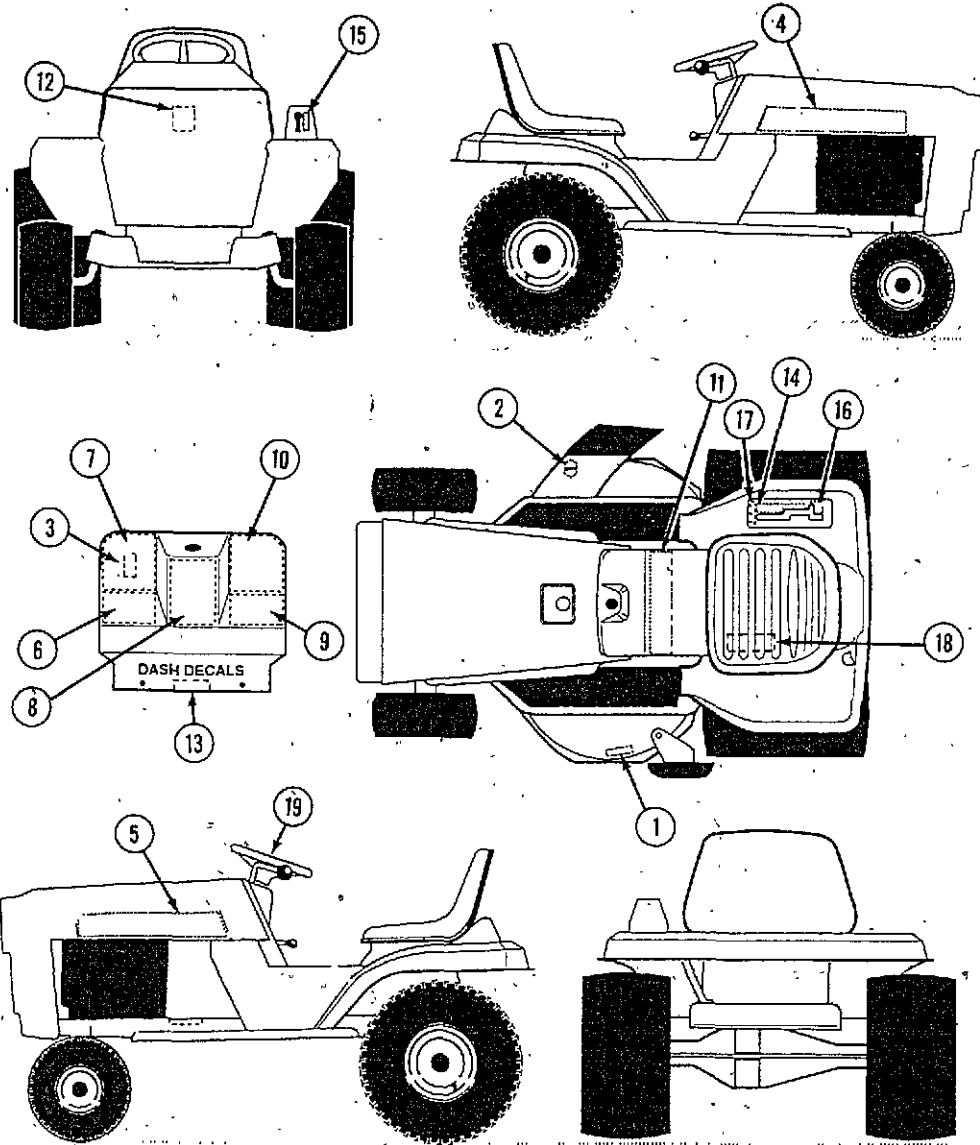


ELECTRICAL ASSEMBLY



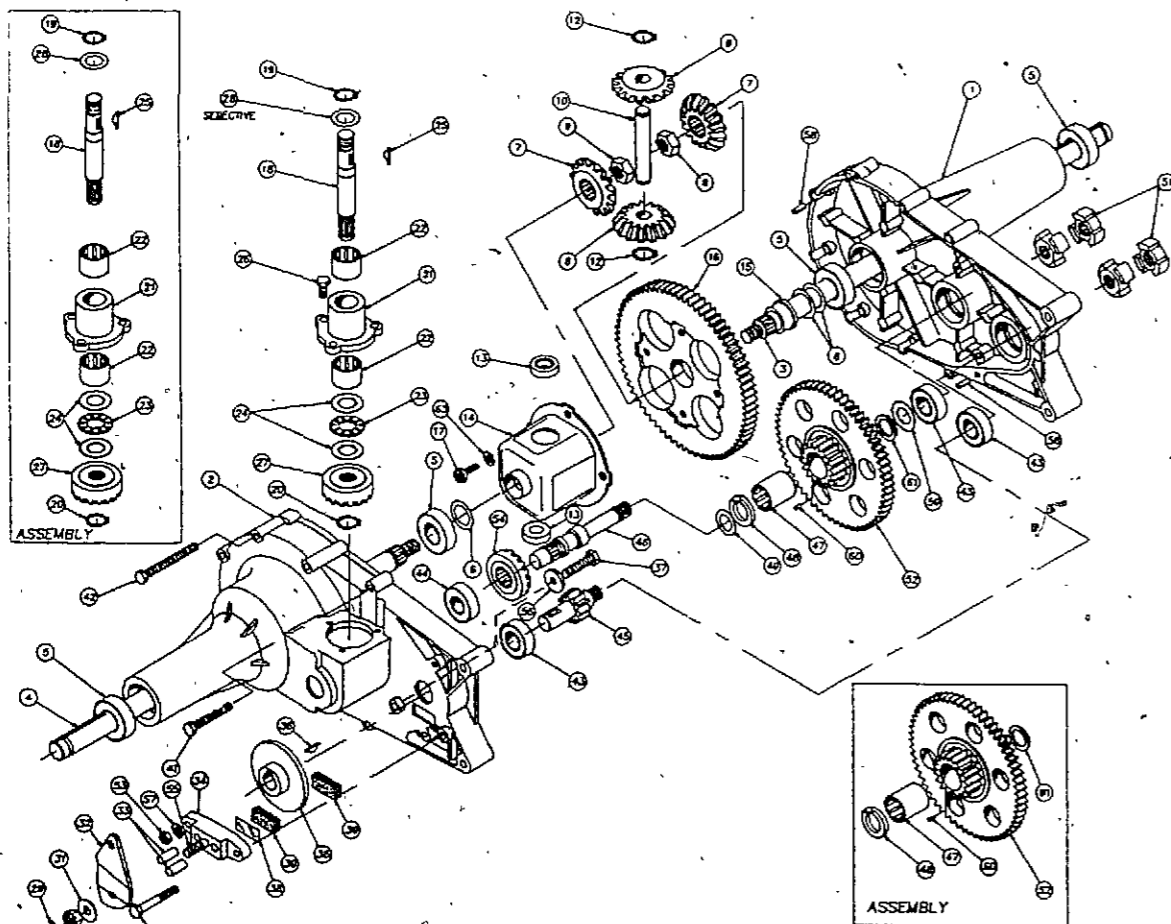
REF.	PART NO.	DESCRIPTION	REQ'D
1	C 42364	HARNES - wire	1
2	C 35030	CLIP - 1.380" LG, .255" ID press, wire	2
3	C 42490	WIRE - light	1
4	C 32178	HEADLIGHT	2
5	C 22573	LENS - headlight	2
6	C 14304	GASKET - headlight	4
7	C 35018	SWITCH - ignition and lights	1
8	193- 63	WASHER - .640" x 1.1" x .05" lock	1
9	C 32396	NUT - 5/8" - 32	1
9	C 32397	CAP - nut	1
10	C 32407	KEY - ignition switch	1
11	C 37298	SWITCH - N.O.	1
12	C 33744	SWITCH - N.C.	1
13	C 35015	SWITCH - N.C.	1
14	C 35016	SCREW - #12 x .50" tap	2
15	C 35022	SOLENOID	1
16	113- 3	SCREW - 1/4" - 20 x .75"	2
17	131- 1102	NUT - 1/4" - 20 lock	3
18	129- 101	NUT - 1/4" - 20	1
19	192- 20	WASHER - 5/16" lock	2
20	129- 102	NUT - 5/16" - 24	2
21	C 35334	TIE - cable, nylon	1
22	C 35033	WIRE - ground, 12.5"	1
23	C 28932	BULB - headlight	2
24	C 35468	HARNES - light	1
25	C 35343	BULB - indicator	2
26	NSS	RECEPTACLE - headlight (use C32178)	2
27	C 30938	SWITCH - seat	1
28	C 35346	SCREW - 1/4" - 20 x .38"	2
29	C 41010	BATTERY - 12 volt	1
30	C 14537	CONNECTOR - wire	1
31	131- 629	NUT - speed	4
32	187- 1334	SCREW - #8 x 1/2"	4
33	113- 3	BOLT - 1/4" - 20 x 3/4"	2
34	131- 934	NUT - 1/4" - 20 flange lock	2
35	C 35036	FUSE - 15 AMP spade type	1
36	195- 518	WASHER - 1/4"	4

DECALS



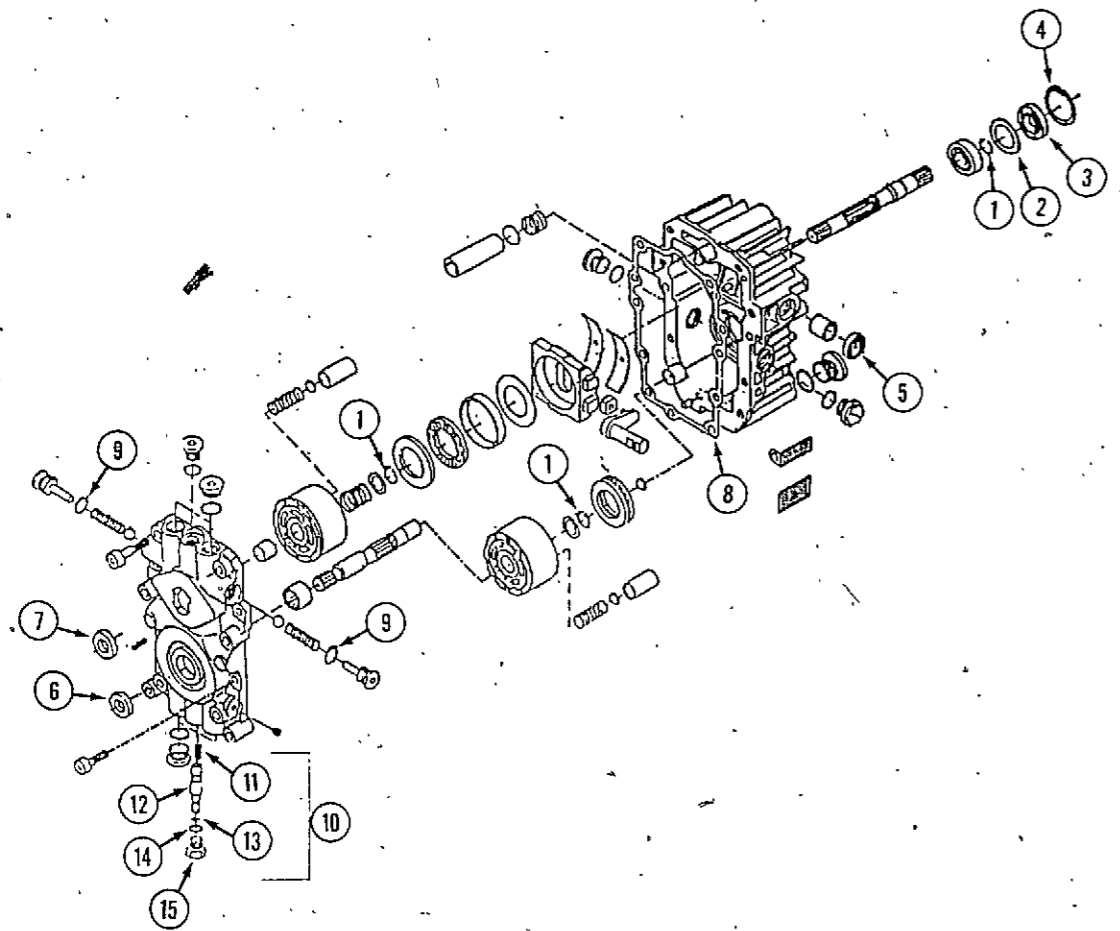
REF.	PART NO.	DESCRIPTION	REQ'D
1	C 35050	DECAL - no step	1
2	C 31087	DECAL - cut hand warning label	1
3	C 42451	DECAL - PTO	1
4	C 37074	DECAL - hood R.H. (1212H)	1
4	C 37076	DECAL - hood side R.H. (1212G)	1
5	C 37073	DECAL - hood L.H. (1212H)	1
5	C 37075	DECAL - hood side L.H. (1212G)	1
6	C 35354	DECAL - dash L.H.	1
7	C 35472	DECAL - dash L.H. throttle	1
8	C 35357	DECAL - center	1
9	C 35474	DECAL - dash R.H. charge O.K.	1
10	C 35473	DECAL - dash R.H. ignition w/lights (1212H)	1
10	C 35562	DECAL - dash R.H. ignition w/lights (1212G)	1
11	C 42473	DECAL - caution console top	1
12	C 30539	MEDALLION	3
13	C 34184	DECAL - flag	1
14	C 35365	DECAL - shifter position (1212G)	1
14	C 35475	DECAL - shift hydro forward (1212H)	1
15	C 35362	DECAL - lift deck blade height	1
16	C 35363	DECAL - shift rev/neutral (1212G)	1
16	C 35476	DECAL - shift hydro reverse (1212H)	1
17	C 35477	DECAL - clutch/brake (1212H)	1
18	C 35478	DECAL - relief valve operation (1212H)	1
19	C 37197	DECAL - steering wheel	1

LAWN TRACTOR MODEL 1212H  
TRANSAXLE



REF.	PART NO.	DESCRIPTION	REQ'D
	C 40675	TRANSAXLE ASSEMBLY	1
1	C 34422	HOUSING - half L.H.	1
2	C 34423	HOUSING - half R.H.	1
3	C 34424	AXLE - 3/4" L.H.	1
4	C 34425	AXLE - 3/4" R.H.	1
5	C 34426	BEARING - ball	4
6	C 34427	WASHER - flat 3/4" x 1-18" x .030"	3
7	C 34428	GEAR - miter	2
8	C 34429	GEAR - miter	2
9	C 34430	NUT - 1/2" - 20	2
10	C 34431	SHAFT - cross	1
12	C 34432	RING - snap	2
13	C 34433	BEARING - thrust	2
14	C 34434	HOUSING - differential	1
15	C 34435	BEARING - flange	1
16	C 34436	GEAR - differential 72T	1
17	C 34437	BOLT - torx 1/4" - 28 x 5/8"	4
18	NSS	SHAFT - input (use C35497 assembly)	1
19	C 34439	RING - snap	1
20	C 34440	RING - retaining 7/16" ext. dia.	1
21	NSS	HOUSING - input (use C35497 assembly)	1
22	C 34441	BEARING - needle	2
23	C 34442	BEARING - thrust	1
24	C 34443	WASHER - flat 5/8" x 1-1/8" x .030"	2
25	C 34444	KEY - 1/8" x 5/8"	1
26	C 34445	SCREW - 1/4" - 20 x 3/4"	3
27	C 34446	GEAR - input pinion 17T	1
28	C 34447	WASHER - flat .62" ID x 1" OD x .050"	1
28	C 34448	WASHER - flat .62" ID x 1.125" OD x .060"	UAR
28	C 34449	WASHER - flat .62 ID x 1" OD x .040"	UAR
29	C 34450	PIN - cotter	1
30	C 34451	NUT - castle 5/16" - 24	1
31	C 34452	WASHER - flat .343" ID x .88" OD x .062"	1
32	C 34453	ARM - brake actuator	1
33	C 34454	PIN - brake actuating	2
34	C 34455	YOKE - brake	1
35	C 34456	DISC - brake	1
36	C 34457	KEY - 3/16" x 5/8"	1
37	C 34458	SCREW - 1/4" - 20 x 1.5"	1
38	C 34459	PLATE - brake pad	1
39	C 34460	PAD - brake	2
40	C 34461	SCREW - 1/4" - 20 x 1"	1
41	C 34462	SCREW - self tap 1/4" - 20 x 2"	4
42	C 34463	SCREW - self tap 1/4" - 20 x 3"	6
43	C 34464	BEARING - ball	3
44	C 34465	BEARING - ball	1
45	C 34466	SHAFT - pinion	1
46	C 34467	SHAFT - drive	1
47	C 34468	BEARING - needle	1
48	C 34469	BEARING - thrust 5/8" ID x 1-1/4" OD x 7/64"	1
49	C 34447	WASHER - flat .62 ID x 1" OD x .050"	1
49	C 34449	WASHER - flat .62" ID x 1" OD x .040"	UAR
51	C 34470	COUPLING	4
52	NSS	GEAR - reduction (use C34482 assembly)	1
53	C 34471	NUT - 1/4" - 20	1
54	C 34472	GEAR - drive pinion 17T	1
55	C 34473	BOLT - square head	1
56	C 34474	WASHER - .265" ID x 15/16" OD x .125"	1
57	C 34475	LOCKWASHER - 1/4"	1
58	C 34476	PIN - roll 3/16" x 1/2"	2
59	C 34477	WASHER - flat .62" ID x 1" OD x .030"	1
60	C 34478	PIN - dowl 3/32" x 1/4"	1
61	C 34479	SEAL - grease, bronze	1
63	C 34480	LOCKWASHER - 1/4"	4

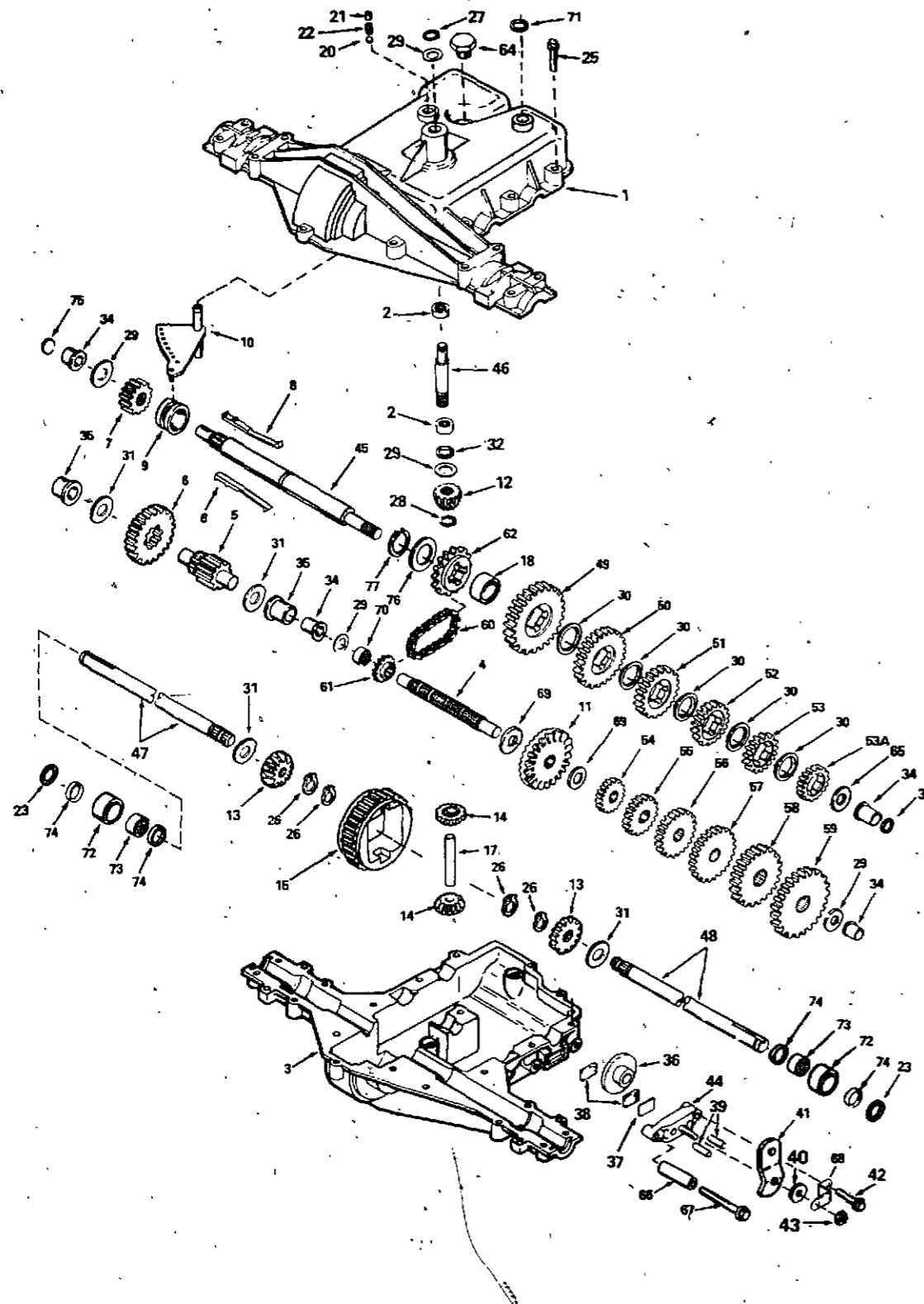
HYDROSTATIC PUMP



REF.	PART NO.	DESCRIPTION	REQ'D
	C 35405	PUMP - hydrostatic	1
	C 35546	KIT - seal (also includes ref. 13 and 14)	1
1	NSS	RING - retaining	3
2	NSS	SPACER	1
3	NSS	SEAL - lip	1
4	NSS	RING - retaining	1
5	NSS	SEAL - lip	1
6	NSS	SEAL - lip	1
7	NSS	SEAL - lip	1
8	NSS	GASKET - housing	1
9	NSS	"O" RING	2
10	C 35547	KIT - by-pass valve	1
11	NSS	SPRING	1
12	NSS	SPOOL - by-pass	1
13	NSS	"O" RING	1
14	NSS	"O" RING	1
15	NSS	PLUG - by-pass	1
	C 35411	RESERVOIR - (not shown)	1
	C 40895	DIAPHRAGM - reservoir (not shown)	1

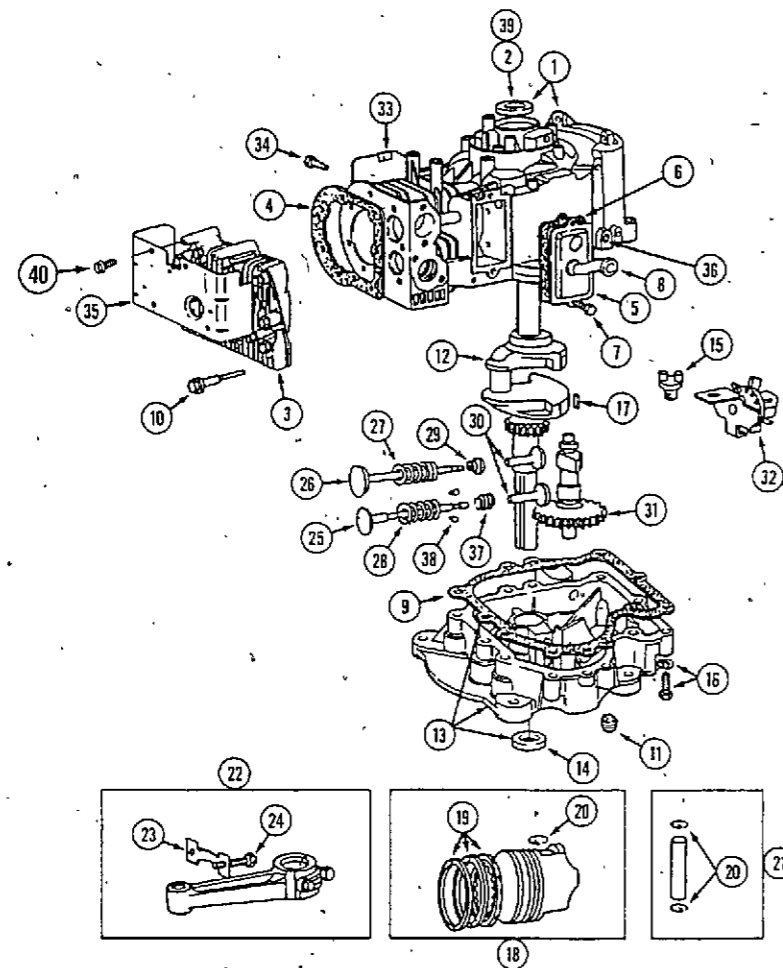


LAWN TRACTOR MODEL 1212G  
TRANSAXLE ASSEMBLY



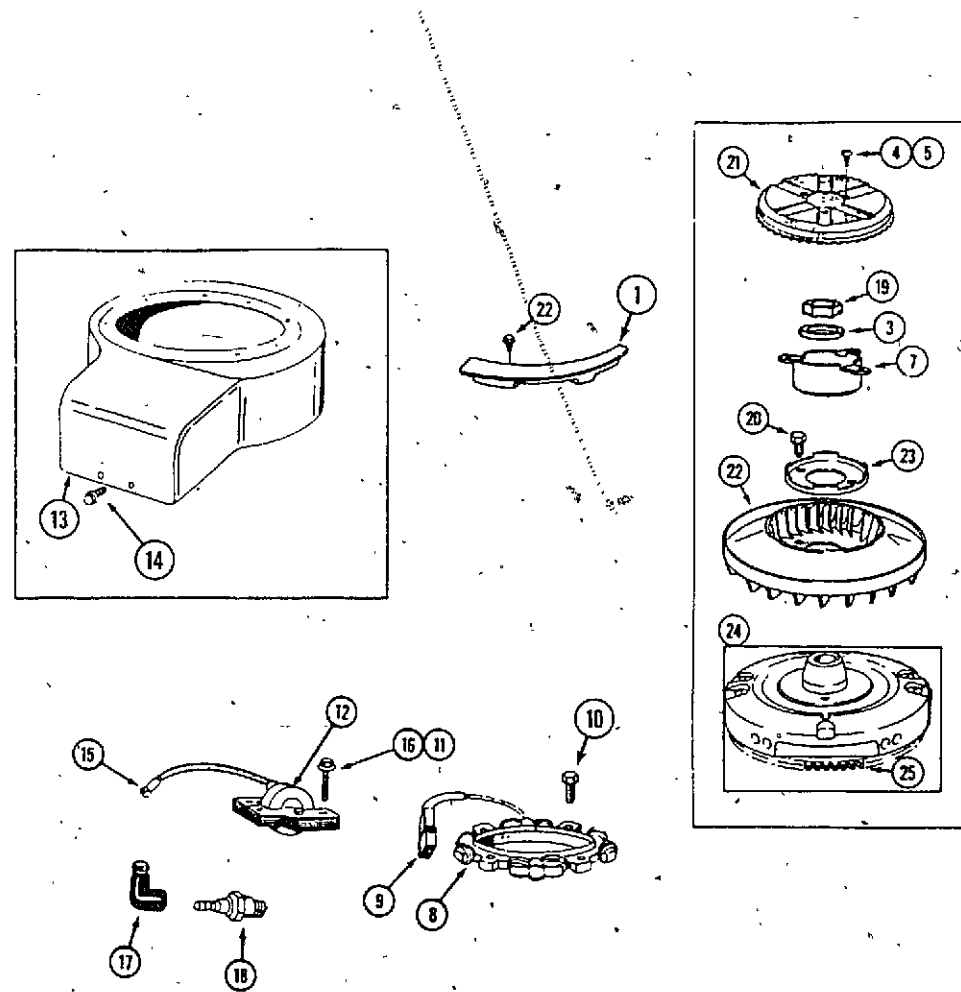
REF.	PART NO.	DESCRIPTION	REQ'D
1	C 34518	COVER - transaxle	1
2	C 28649	BEARING - needle	2
3	C 34519	CASE - transaxle	1
4	C 34488	SHAFT - counter	1
5	C 34489	SHAFT & PINION ASSY. - output	1
6	C 27562	GEAR - output	1
7	C 27553	GEAR - spur 15T	1
8	C 34490	KEY - shifter	1
9	C 34491	COLLAR - shifter	4
10	C 34492	ROD & FORK ASSY. - shift	1
11	C 34493	GEAR - bevel 42T	1
12	C 28652	GEAR - bevel pinion, input	1
13	C 34520	GEAR - bevel	2
14	C 34521	GEAR - bevel pinion	2
15	C 34494	GEAR - ring	1
17	C 34495	PIN - drive	1
18	C 24496	SPACER	1
20	C 28667	BALL - steel 5/16" dia.	1
21	C 34148	SCREW - set 3/8" - 16 x 3/8"	1
22	C 28654	SPRING	1
23	C 34497	RING - seal	2
25	C 34147	SCREW - 1/4" - 20 x 1-1/4" flanged, tapping	17
26	C 34156	RING - retainer (pkg. of 2)	4
27	C 19347	RING - retainer	1
28	C 19352	RING - retainer	1
29	C 19345	WASHER - thrust	5
30	C 28664	WASHER - thrust	5
31	C 11205	WASHER	4
32	C 28648	"O" RING	1
33	C 27570	SEAL - square cut	1
34	C 28653	BUSHING - flanged	4
35	C 27565	BUSHING - flanged	2
36	C 27563	DISK - brake	1
37	C 19354	PLATE - brake pad	1
38	C 19353	PAD - brake	2
39	C 28650	PIN - dowel	2
40	C 19357	WASHER - flat	1
41	C 34498	LEVER - brake	1
42	C 34147	SCREW - 1/4" - 20 x 1-1/4" flanged, tapping	1
43	C 19358	NUT - lock 5/16" - 24	1
44	C 34144	HOLDER - brake pad	1
45	C 34499	SHAFT - brake	1
46	C 28651	SHAFT - input	1
47	C 34522	AXLE - 11 - 5/16" long	1
48	C 34523	AXLE - 15 - 7/8" long	1
49	C 34502	GEAR - spur 37T	1
50	C 28658	GEAR - spur 30T	1
51	C 34503	GEAR - spur 27T	1
52	C 28657	GEAR - spur 25T	1
53	C 27555	GEAR - spur 22T	1
53A	C 28656	GEAR - spur 20T	1
54	C 34504	GEAR - spur 12T	1
55	C 28660	GEAR - spur 20T	1
56	C 34505	GEAR - spur 23T	1
57	C 28661	GEAR - spur 25T	1
58	C 27556	GEAR - spur 28T	1
59	C 28662	GEAR - spur 30T	1
60	C 34506	CHAIN - roller no. 41, 22 links	1
61	C 34507	SPROCKET - 10T	1
62	C 34508	SPROCKET - 14T	1
64	C 27588	PLUG - hex. 9/16" - 18	1
65	C 28663	WASHER - thrust	1
66	C 34514	SPACER	1
67	C 34515	SCREW - 1/4" - 20 x 2-1/4" flanged, tapping	1
68	C 28821	BRACKET - brake lever	1
69	C 34511	WASHER - thrust	2
70	C 34512	SPACER	1
71	C 34149	SEAL - square cut	1
72	C 34524	SPACER	1
73	C 34525	BEARING - needle	2
74	C 27581	RING - square cut	4
75	C 34513	DISK	1
76	C 34509	WASHER - thrust	1
77	C 34510	RING - retaining	1

ENGINE BLOCK



REF.	PART NO.	DESCRIPTION	REQ'D
1	C 40879	GASKET SET - includes ref. 4, 6, 9 and carb. mtg. gasket	1
1	C 30843	CYLINDER BLOCK ASSEMBLY - short	1
2	C 25709	SEAL - oil	1
3	C 40880	HEAD - cylinder	1
4	C 30410	GASKET - cylinder head	1
5	C 40881	BREATHER ASSEMBLY	1
6	C 27350	GASKET - valve cover	1
7	187-1508	SCREW - sems no. 10-24 x1/2"	2
8	C 25712	TUBE - breather	1
9	C 30411	GASKET - crankcase cover 1/64" thick	1
9	C 30412	GASKET - crankcase cover .005" thick	1
9	C 30413	GASKET - crankcase cover .009" thick	1
10	BR 93723	SCREW - cylinder head 3" long	6
11	221-843	PLUG - oil drain	1
12	C 30414	CRANKSHAFT	1
13	C 40882	SUMP - oil (also includes ref. no. 9)	1
14	C 25718	SEAL - oil	1
15	BR 66768	PLUG - oil filler	1
16	NSS	SCREW - sump mounting (use 113-120 and 192-20)	6
17	C 27236	KEY - flywheel	1
18	C 29826	PISTON ASSEMBLY - standard	1
18	C 29827	PISTON ASSEMBLY - .010" oversize	1
18	C 29828	PISTON ASSEMBLY - .020" oversize	1
18	C 29829	PISTON ASSEMBLY - .030" oversize	1
19	C 25725	RING SET - piston .010" oversize	1
19	C 25726	RING SET - piston .020" oversize	1
19	C 25727	RING SET - piston .030" oversize	1
19	C 29830	RING SET - piston, standard	1
20	C 25728	LOCK - piston pin	2
21	C 25729	PIN ASSEMBLY - piston, standard	1
21	C 25730	PIN ASSEMBLY - piston .005" oversize	1
22	C 30416	ROD ASSEMBLY - connecting, standard	1
22	C 33373	ROD ASSEMBLY - connecting (.020" undersize)	1
23	C 25732	LOCK - connecting rod screw	1
24	C 25733	SCREW - connecting rod	2
25	C 30417	VALVE - exhaust	1
26	C 30418	VALVE - intake	1
27	BR 65906	SPRING - intake valve	1
28	BR 26828	SPRING - exhaust valve	1
29	BR221596	RETAINER - intake valve	2
30	C 30419	TAPPET - valve	2
31	C 29833	CAMSHAFT	1
32	C 25746	OIL SLINGER - governor gear and bracket	1
33	C 40883	SHIELD - cylinder	1
34	NSS	SCREW - shield mounting (use 163-18 and 192-18)	1
35	C 33377	COVER - cylinder head	1
36	C 33379	BUSHING - governor crank (1/4" I.D.)	1
37	BR292260	ROTATOR - exhaust valve	1
38	BR 93630	RETAINER - exhaust valve	2
39	C 29778	BEARING - crankshaft	1
40	C 34539	BOLT - cover	UAR

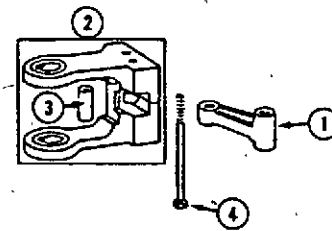
FLYWHEEL AND STATOR



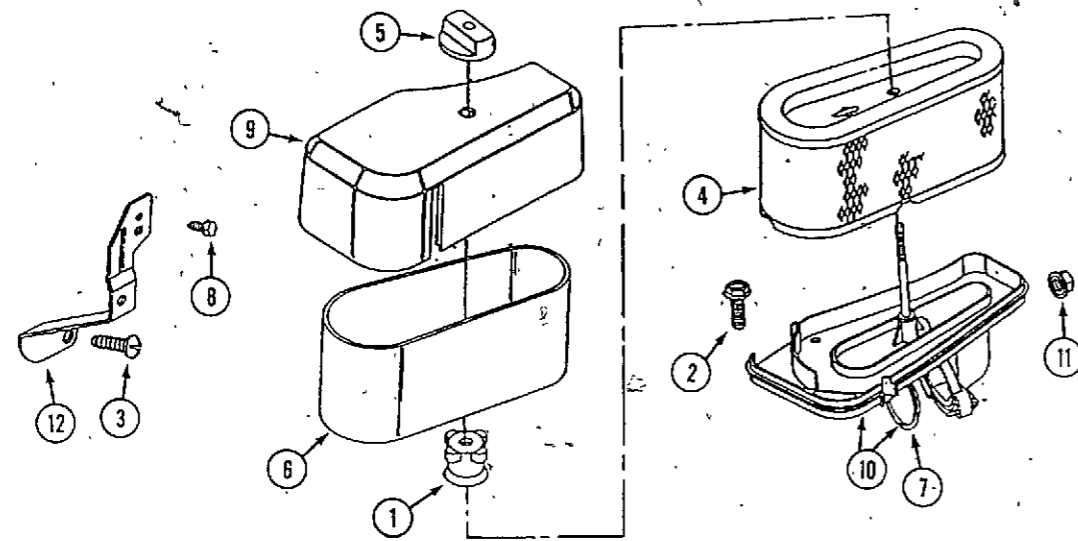
REF.	PART NO.	DESCRIPTION	REQ'D
1	C 30446	GUARD - flywheel	1
3	C 33317	WASHER - spring	1
4	182- 84	SCREW - No. 8-32 x 3/8"	4
5	193- 25	LOCKWASHER - No. 8	4
7	BR222561	CUP - screen mounting	1
8	C 29867	STATOR - alternator	1
9	C 29865	DIODE and connector assembly	1
10	182- 90	SCREW - No. 8-32 x 1"	4
11	193- 25	WASHER - No. 8	4
12	C 34289	ARMATURE ASSEMBLY	1
13	C 40884	HOUSING - blower	1
14	C 34539	SCREW - mounting	4
15	BR221798	TERMINAL - ignition cable	1
16	182- 549	SCREW - No. 8-32 x 3/4"	2
17	BR 66538	BOOT - spark plug	1
18	C 24329	SPARK PLUG - resistor	1
19	BR 92284	NUT - flywheel	1
20	NSS	SCREW - 3/4" long (use 113-102 and 92-5)	2
21	BR222562	SCREEN - flywheel	1
22	C 30447	FAN - flywheel	1
23	C 30448	RETAINER - fan	1
24	C 33372	FLYWHEEL AND RING GEAR	1
25	BR392134	RING GEAR	1

COUNTERWEIGHT

1	C 29816	LINK - counterweight	1
2	C 30423	COUNTERWEIGHT ASSEMBLY	1
3	C 29818	PIN - counterweight	1
4	C 29835	SCREW - counterweight	1

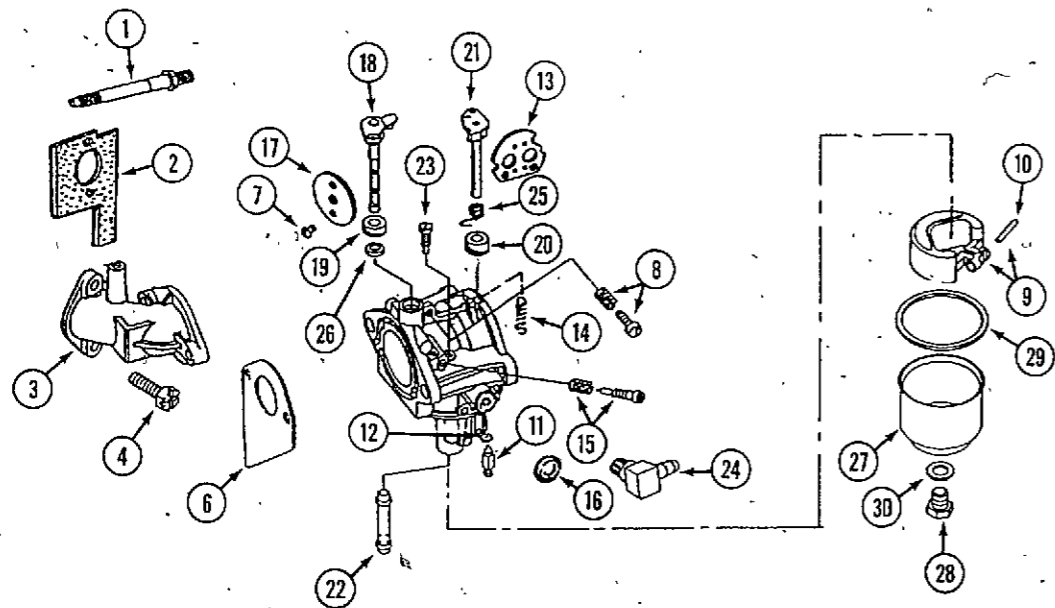


**AIR CLEANER**



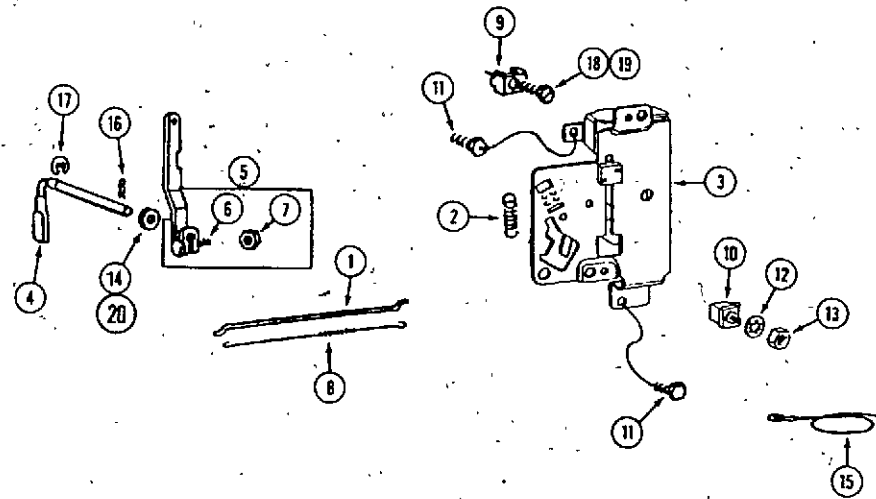
REF.	PART NO.	DESCRIPTION	REQ'D
1	C 33344	NUT - air cleaner mounting	1
2	O/L	SCREW - mounting	1
3	O/L	SCREW - mounting	1
4	C 40859	CARTRIDGE - air cleaner	1
5	C 40860	KNOB - air cleaner	1
6	C 40861	PRECLEANER	1
7	C 40862	"O" RING - air cleaner	1
8	O/L	SCREW - mounting	1
9	C 40864	COVER - air cleaner	1
10	C 40865	BODY - air cleaner	1
11	O/L	LOCKNUT - mounting	1
12	C 40863	BRACE - air cleaner	1

**C40872 CARBURETOR**



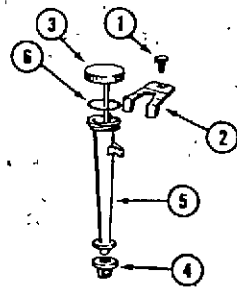
1	C 40866	STUD - mounting	UAR
2	C 25738	GASEKT - elbow	1
3	C 40874	ELBOW - carburetor	1
4	C 40871	SCREW - mounting	UAR
5	C 40872	CARBURETOR ASSEMBLY (not shown)	1
6	NSS	GASKET - carburetor (see kits below)	1
7	NSS	SCREW - throttle and choke plate (see kits below)	2
8	C 40867	SCREW - idle speed	1
9	C 40873	FLOAT - carburetor	1
10	NSS	PIN - float (also see kits below)	1
11	NSS	VALVE - inlet (see kits below)	1
12	NSS	SEAT - inlet valve (see kits below)	1
13	NSS	VALVE - choke (order complete carburetor)	1
14	C 40868	SPRING - choke	1
15	C 40869	VALVE - needle	1
16	NSS	PLUG - welch (see kits below)	1
17	NSS	VALVE - throttle (order complete carburetor)	1
18	NSS	SHAFT - throttle (order complete carburetor)	1
19	NSS	SEAL - throttle shaft (see kits below)	1
20	NSS	SEAL - choke shaft (see kits below)	1
21	NSS	SHAFT - choke (order complete carburetor)	1
22	NSS	NOZZLE - carburetor (see kits below)	1
23	NSS	PILOT - jet	1
24	C 40875	FITTING - fuel	1
25	C 40876	SPRING - return	1
26	NSS	WASHER - throttle shaft (see kits below)	1
27	C 40877	BOWL ASSEMBLY - fuel	1
28	NSS	SCREW - fuel bowl	1
29	NSS	GASKET - fuel bowl (also see kits below)	1
30	NSS	WASHER - fuel bowl (also see kits below)	1
	C 40870	KIT - carburetor overhaul (includes ref. 6, 7, 10, 11, 12, 16, 19, 20, 22, 23, 28, 29 and 30)	
	C 40878	KIT - carburetor gaskets (includes ref. 6, 29 and 30)	

**GOVERNOR**



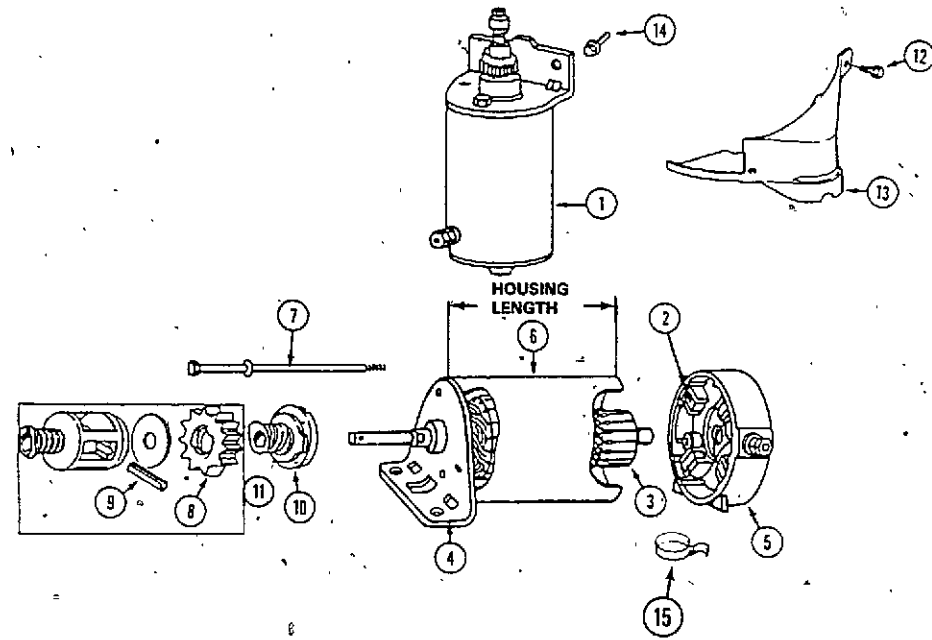
REF.	PART NO.	DESCRIPTION	REQ'D
1	C 40885	LINK - governor	1
2	C 33319	SPRING - governor	1
3	NSS	BRACKET - governor	1
4	BR231058	CRANK - governor	1
5	C 40886	LEVER ASSEMBLY	1
6	11- 312	BOLT - lever	1
7	129- 7	NUT - No. 10-24	1
8	C 40887	SPRING - governor link	1
9	BR221535	CLAMP - casing	1
10	C 29794	INSULATOR ASSEMBLY	1
11	187- 1510	SCREW - mounting, no. 10-32 x 3/8" self tap	1
12	193- 25	LOCKWASHER - No. 8	1
13	129- 6	NUT - No. 8-32	2
14	BR222450	WASHER - governor crank	1
15	C 29796	WIRE - ground	1
16	136- 103	PIN - cotter hair pin	1
17	C 28643	RETAINER - "E" ring	1
18	163- 4	SCREW - no. 10-32 x 5/8"	1
19	192- 3	WASHER	1
20	C 33380	SEAL - governor	1

**OIL FILLER**



1	187- 1037	SCREW - clamp mounting	1
2	C 34540	CLAMP - oil filler tube	1
3	C 34541	DIPSTICK - oil	1
4	BR 68838	SEAL - filler tube	1
5	C 34542	TUBE - oil filler	1
6	BR270920	SEAL - filler cap	1

STARTER



REF.	PART NO.	DESCRIPTION	REQ'D
1	C 27264	MOTOR - starter, 12 volt (3-21/32" housing length)	1
1	C 34284	MOTOR - starter, 12 volt (4-9/16" housing length)	1
2	C 27259	BRUSH ASSEMBLY - (for C27264 starter)	1
2	C 34286	BRUSH ASSEMBLY - (for C34284 starter)	1
3	NSS	ARMATURE - starter (order complete starter)	1
4	C 34335	END CAP - drive end	1
5	C 34336	END CAP - commutator end (for C34284 starter)	1
5	C 27258	END CAP - commutator end (for C27264 starter)	1
6	NSS	HOUSING - starter (order complete starter)	1
7	C 27260	BOLT - thru (includes washer) (for C27264 starter)	2
7	C 34285	BOLT - thru (includes washer) (for C34284 starter)	1
8	C 27422	GEAR - starter	1
9	138-2032	PIN - roll	1
10	C 30406	CLUTCH - drive	1
11	C 30441	KIT - drive retainer	1
12	187-1328	SCREW - No. 8-18 x 3/8"	2
13	C 30443	COVER AND SHIELD - starter	1
14	NSS	SCREW - mounting (use 113-102 and 92-5)	2
15	C 34364	SPRING SET - brush (for C34284 starter)	1

NUMERICAL INDEX

PART NO.	PAGE NO.	REF. NO.	PART NO.	PAGE NO.	REF. NO.
BR 26828	35	28	C28105	9	25
BR 65906	35	27	C28105	23	18
BR 66538	37	17	C28226	15	30
BR 66768	35	15	C28226	17	36
BR 68838	41	4	C28232	17	6
BR 92284	37	19	C28643	41	17
BR 93630	35	38	C28648	33	32
BR 93723	35	10	C28649	33	2
BR221535	41	9	C28650	33	39
BR221596	35	29	C28651	33	46
BR221798	37	15	C28652	33	12
BR222450	41	14	C28653	33	34
BR222561	37	7	C28654	33	22
BR222562	37	21	C28656	33	53A
BR231058	41	4	C28657	33	52
BR270920	41	6	C28658	33	50
BR292260	35	37	C28660	33	55
BR392134	37	25	C28661	33	57
C11205	33	31	C28662	33	59
C11906	17	3	C28663	33	65
C12102	17	34	C28664	33	30
C13106	17	33	C28667	33	20
C13605	17	34	C28806	9	34
C14304	25	6	C28821	33	68
C14537	25	30	C28932	25	23
C16362	5	23	C28972	15	31
C16450	9	6	C29778	35	39
C18812	17	2	C29794	41	10
C19345	33	29	C29796	41	15
C19347	33	27	C29816	37	1
C19352	33	28	C29818	37	3
C19353	33	38	C29826	35	18
C19354	33	37	C29827	35	18
C19357	33	40	C29828	35	18
C19358	33	43	C29829	35	18
C22573	25	5	C29830	35	19
C24329	37	18	C29833	35	31
C25709	35	2	C29835	37	4
C25712	35	8	C29865	37	9
C25718	35	14	C29867	37	8
C25725	35	19	C30406	43	10
C25726	35	19	C30410	35	4
C25727	35	19	C30411	35	9
C25728	35	20	C30412	35	9
C25729	35	21	C30413	35	9
C25730	35	21	C30414	35	12
C25732	35	23	C30416	35	22
C25733	35	24	C30417	35	25
C25738	39	2	C30418	35	26
C25746	35	32	C30419	35	30
C26526	17	38	C30423	37	2
C27236	35	17	C30441	43	11
C27259	43	2	C30443	43	13
C27260	43	7	C30446	37	1
C27264	43	1	C30447	37	22
C27350	35	6	C30448	37	23
C27422	43	8	C30539	27	12
C27553	33	7	C30649	15	20
C27555	33	53	C30843	35	1
C27556	33	58	C30938	25	27
C27562	33	6	C31087	27	2
C27563	33	36	C31365	5	19
C27565	33	35	C31366	5	22
C27570	33	33	C31597	5	20
C27581	33	4	C31978	19	28
C27588	33	64	C32178	25	4
C27739	15	32	C32376	19	18
C27739	17	30	C32396	25	9

PART NO.	PAGE NO.	REF. NO.	PART NO.	PAGE NO.	REF. NO.
C32397	25	9	C34461	29	40
C32407	25	10	C34462	29	41
C33317	37	3	C34463	29	42
C33319	41	2	C34464	29	43
C33344	39	1	C34465	29	44
C33372	37	24	C34466	29	45
C33373	35	22	C34467	29	46
C33377	35	35	C34468	29	47
C33379	35	36	C34469	29	48
C33380	41	20	C34470	29	51
C33644	19	2	C34471	29	53
C33744	25	12	C34472	29	54
C34144	33	44	C34473	29	55
C34147	33	25	C34474	29	56
C34147	33	42	C34475	29	57
C34148	33	21	C34476	29	58
C34149	33	71	C34477	29	59
C34156	33	26	C34478	29	60
C34184	27	13	C34479	29	61
C34284	43	1	C34480	29	63
C34285	43	7	C34488	33	4
C34286	43	2	C34489	33	5
C34289	37	12	C34490	33	8
C34300	19	31	C34491	33	9
C34303	23	5	C34492	33	10
C34335	43	4	C34493	33	11
C34336	43	5	C34494	33	15
C34364	43	15	C34495	33	17
C34422	29	1	C34496	33	18
C34423	29	2	C34497	33	23
C34424	29	3	C34498	33	41
C34425	29	4	C34499	33	45
C34426	29	5	C34502	33	49
C34427	29	6	C34503	33	51
C34428	29	7	C34504	33	54
C34429	29	8	C34505	33	56
C34430	29	9	C34506	33	60
C34431	29	10	C34507	33	61
C34432	29	12	C34508	33	62
C34433	29	13	C34509	33	76
C34434	29	14	C34510	33	77
C34435	29	15	C34511	33	69
C34436	29	16	C34512	33	70
C34437	29	17	C34513	33	75
C34439	29	19	C34514	33	66
C34440	29	20	C34515	33	67
C34441	29	22	C34518	33	1
C34442	29	23	C34519	33	3
C34443	29	24	C34520	33	13
C34444	29	25	C34521	33	14
C34445	29	26	C34522	33	47
C34446	29	27	C34523	33	48
C34447	29	28	C34524	33	72
C34448	29	28	C34525	33	73
C34449	29	28	C34539	35	40
C34450	29	49	C34539	37	14
C34451	29	30	C34540	41	2
C34452	29	31	C34541	41	3
C34453	29	32	C34542	41	5
C34454	29	33	C34800	11	11
C34455	29	34	C34808	7	9
C34456	29	35	C34816	7	3
C34457	29	36	C34816	15	19
C34458	29	37	C34823	9	44
C34459	29	38	C34824	9	55
C34460	29	39	C34825	9	54
			C34826	9	56
			C34828	23	15

NUMERICAL INDEX

PART NO.	PAGE NO.	REF. NO.	PART NO.	PAGE NO.	REF. NO.
C34834	5	15	C35140	9	26
C34839	23	19	C35141	9	28
C34848	5	12	C35142	9	29
C34874	11	4	C35143	9	31
C34876	15	36	C35144	9	32
C34886	11	17	C35145	9	33
C34887	11	18	C35147	9	35
C34901	21	32	C35148	9	36
C34902	15	14	C35150	9	39
C34903	15	13	C35151	9	40
C34904	13	54	C35152	9	41
C34909	11	3	C35153	9	42
C34916	15	34	C35154	9	43
C34918	15	33	C35156	9	45
C34920	15	25	C35157	9	46
C34920	17		C35159	9	48
C34925	19	11	C35160	9	49
C34939	13	51	C35161	9	50
C34968	9	38	C35162	9	51
C34979	15	9	C35163	9	52
C34980	15	6	C35165	9	57
C34983	23	6	C35166	9	58
C34985	23	8	C35183	17	18
C34989	23	3	C35193	17	
C34990	23	2	C35207	17	29
C34991	23	1	C35233	11	5
C34992	21	28	C35235	11	10
C34993	15	18	C35238	11	19
C34997	13	32	C35239	11	20
C34997	21	30	C35239	11	24
C34998	21	31	C35239	13	35
C35015	25	13	C35239	13	39
C35016	25	14	C35241	11	25
C35018	25	7	C35242	11	28
C35022	25	15	C35242	13	41
C35030	25	2	C35244	11	31
C35033	25	22	C35247	11	35
C35036	25	35	C35247	13	47
C35050	27	1	C35248	11	36
C35053	9	7	C35248	13	10
C35065	5	7	C35250	11	39
C35066	5	8	C35254	15	5
C35067	5	9	C35255	15	7
C35073	5	4	C35256	15	10
C35077	5	6	C35257	15	11
C35082	5	26	C35258	15	12
C35112	7	7	C35259	15	17
C35113	7	8	C35264	11	9
C35113	7	20	C35278	19	9
C35114	7	10	C35279	19	10
C35117	7	16	C35280	19	13
C35118	7	17	C35289	19	24
C35119	7	18	C35290	19	25
C35120	7	19	C35291	19	26
C35120	7	21	C35294	21	2
C35123	9	1	C35296	21	7
C35125	9	4	C35297	21	8
C35126	9	5	C35300	21	27
C35127	9	8	C35301	23	9
C35128	9	10	C35302	23	7
C35129	9	11	C35304	23	4
C35130	9	12	C35307	21	20
C35131	9	14	C35309	21	23
C35133	9	17	C35312	21	24
C35134	9	18	C35313	21	
C35137	9	22	C35314	21	6
C35139	9	23	C35316	23	17
C35139	21	24	C35318	21	12

## NUMERICAL INDEX

PART NO.	PAGE NO.	REF. NO.	PART NO.	PAGE NO.	REF. NO.
C35319	21	13	C35468	25	24
C35319	23	5	C35472	27	7
C35324	23	6	C35473	27	10
C35334	9	20	C35474	27	9
C35334	25	21	C35475	27	14
C35343	25	25	C35476	27	16
C35346	25	28	C35477	27	17
C35354	27	6	C35478	27	18
C35357	27	8	C35546	31	
C35362	27	15	C35547	31	10
C35363	27	16	C35552	11	2
C35365	27	14	C35555	15	21
C35369	19	34	C35562	27	10
C35370	23	20	C35567	7	23
C35371	23	21	C35667	7	2
C35372	23	22	C37073	27	5
C35373	23	14	C37074	27	4
C35377	5	14	C37075	27	5
C35385	7	11	C37076	27	4
C35386	7	18	C37094	19	19
C35388	9	21	C37147	5	17
C35393	17	11	C37148	19	32
C35394	17	12	C37197	27	19
C35396	17	14	C37259	43	5
C35398	17	19	C37298	25	11
C35399	17	24	C37472	19	14
C35400	17	25	C37477	19	1
C35401	17	26	C37481	19	15
C35402	17	27	C37482	19	20
C35403	17	28	C39056	5	18
C35404	17		C39496	17	4
C35405	13	2	C39497	17	10
C35405	31		C39498	17	21
C35406	13	3	C39499	17	22
C35407	13	7	C39502	17	9
C35411	13	14	C39514	19	3
C35412	13	15	C39521	5	10
C35413	13	16	C39620	9	9
C35414	13	17	C39620	9	19
C35416	13	21	C40654	17	43
C35417	13	22	C40655	17	44
C35418	13	23	C40658	17	7
C35419	13	24	C40660	5	11
C35420	13	25	C40661	7	1
C35421	13	26	C40664	15	29
C35422	13	27	C40666	17	41
C35423	13	30	C40675	13	1
C35424	13	31	C40675	29	
C35426	11	32	C40676	13	34
C35427	13	48	C40677	13	43
C35428	13	49	C40678	13	44
C35429	13	52	C40702	17	5
C35430	13	53	C40705	17	16
C35432	13	29	C40714	5	1
C35433	15	1	C40715	5	2
C35435	15	23	C40733	11	1
C35436	15	35	C40737	19	29
C35437	15	28	C40859	39	4
C35438	15	26	C40860	39	5
C35439	19	4	C40861	39	6
C35440	19	5	C40862	39	7
C35441	19	6	C40863	39	12
C35442	19	7	C40864	39	9
C35443	19	8	C40865	39	10
C35447	19	23	C40866	39	1
C35457	23	3	C40867	39	8
C35458	23	4	C40868	39	14
C35466	23	10	C40869	39	15

PART NO.	PAGE NO.	REF. NO.	PART NO.	PAGE NO.	REF. NO.
C40871	39	4	C40871	39	4
C40872	39	5	C40872	39	5
C40873	39	6	C40873	39	6
C40874	39	3	C40874	39	3
C40875	39	24	C40875	39	24
C40876	39	25	C40876	39	25
C40879	35		C40879	35	
C40880	35	3	C40880	35	3
C40881	35	5	C40881	35	5
C40882	35	13	C40882	35	13
C40883	35	33	C40883	35	33
C40884	37	13	C40884	37	13
C40885	41	1	C40885	41	1
C40886	41	5	C40886	41	5
C40887	41	8	C40887	41	8
C41010	25	29	C41010	25	29
C42123	21	1	C42123	21	1
C42124	21	9	C42124	21	9
C42125	21	11	C42125	21	11
C42126	21	14	C42126	21	14
C42127	21	16	C42127	21	16
C42128	21	17	C42128	21	17
C42129	21	19	C42129	21	19
C42130	21	22	C42130	21	22
C42132	21	29	C42132	21	29
C42133	23	9	C42133	23	9
C42363	19	22	C42363	19	22
C42364	25	1	C42364	25	1
C42451	27	3	C42451	27	3
C42473	27	11	C42473	27	11
C42490	25	3	C42490	25	3
011-312	41	6	011-312	41	6
111-202	9	27	111-202	9	27
111-323	23	1	111-323	23	1
111-330	15	15	111-330	15	15
113-2	11	29	113-2	11	29
113-2	13	20	113-2	13	20
113-3	9	15	113-3	9	15
113-3	25	16	113-3	25	16
113-3	25	33	113-3	25	33
113-102	5	3	113-102	5	3
113-102	7	5	113-102	7	5
113-102	19	16	113-102	19	16
113-103	7	13	113-103	7	13
113-103	9	2	113-103	9	2
113-103	11	13	113-103	11	13
113-103	11	21	113-103	11	21
113-103	13	28	113-103	13	28
113-103	13	36	113-103	13	36
113-103	13	40	113-103	13	40
113-103	15	2	113-103	15	2
113-103	19	30	113-103	19	30
113-103	21	25	113-103	21	25
113-104	13	55	113-104	13	55
113-110	11	6	113-110	11	6
113-118	21	4	113-118	21	4
113-118	23	13	113-118	23	13
113-207	13	11	113-207	13	11
113-208	11	37	113-208	11	37
113-208	11	40	113-208	11	40
113-412	17	13	113-412	17	13
113-447	17	23	113-447	17	23
129-6	41	13	129-6	41	13
129-7	41	7	129-7	41	7
129-101	9	47	129-101	9	47
129-101	25	18	129-101	25	18
129-102	25	20	129-102	25	20
129-105	11	34	129-105	11	34

PART NO.	PAGE NO.	REF. NO.	PART NO.	PAGE NO.	REF. NO.
129-105	13	46	129-105	13	46
129-163	17	17	129-163	17	17
129-165	17	35	129-165	17	35
129-165	17	40	129-165	17	40
129-365	17	35	129-365	17	35
129-2175	13	18	129-2175	13	18
131-176	7	4	131-176	7	4
131-176	13	6	131-176	13	6
131-176	15	4	131-176	15	4
131-176	21	21	131-176	21	21
131-176	23	12	131-176	23	12
131-629	25	31	131-629	25	31
131-911	5	5	131-911	5	5
131-911	7	6	131-911	7	6
131-911	7	15	131-911	7	15
131-911	9	3	131-911	9	3
131-911	11	8	131-911	11	8
131-911	11	15	131-911	11	15
131-911	11	23	131-911	11	23
131-911	11	27	131-911	11	27
131-911	13	38	131-911	13	38
131-911	15	22	131-911	15	22
131-911	19	21	131-911	19	21
131-911	21	5	131-911	21	5
131-934	5	16	131-934	5	16
131-934	5	21	131-934	5	21
131-934	9	13	131-934	9	13
131-934	9	16	131-934	9	16
131-934	11	30	131-934	11	30
131-934	13	42	131-934	13	42
131-934	25	34	131-934	25	34
131-938	13	50	131-938	13	50
131-938	17	20	131-938	17	20
131-938	21	15	131-938	21	15
131-938	23	16	131-938	23	16
131-938	23	23	131-938	23	23
131-1102	13	33	131-1102	13	33
131-1102	21	18	131-1102	21	18
131-1102	25	17	131-1102	25	17
131-1182	17	15	131-1182	17	15
131-1216	11	38	131-1216	11	38
131-1216	11	16	131-1216	11	16
131-1216	15	16	131-1216	15	16
131-1216	23	8	131-1216	23	8
131-1352	13	13	131-1352	13	13
132-310	11	33	132-310	11	33
132-310	13	45	132-310	13	45
132-311	17	37	132-311	17	37
132-329	9	53	132-329	9	53
132-334	5	24	132-334	5	24
136-103	41	16	136-103	41	16
138-143	17	42	138-143	17	42
138-2032	43	9	138-2032	43	9
138-2071	13	8	138-2071	13	8
163-4	41	18	163-4	41	18
178-860	13	9	178-860	13	9
182-84	37	4	182-84	37	4
182-90	37	10	182-90	37	10
182-549	37	16	182-549	37	16
187-1036	5	13	187-1036	5	13
187-1036	7	12	187-1036	7	12
187-1037	41	1	187-1037	41	1
187-1328	5	25	187-1328	5	25
187-1328	43	12	187-1328	43	12
187-1334	25	32	187-1334	25	32
187-1508	35	7	187-1508	35	7
187-1510	41	11	187-1510	41	11
192-3	41	19	192-3	41	19

## NUMERICAL INDEX

PART NO.	PAGE NO.	REF. NO.	PART NO.	PAGE NO.	REF. NO.
192-19	13	19	192-19	13	19
192-20	7	25	192-20	7	25
192-20	11	12	192-20	11	12
192-20	13	4	192-20	13	4
192-20	25	19	192-20	25	19
192-21	13	12	192-21	13	12
192-23	17	8	192-23	17	8
193-6	9	37	193-6	9	37
193-25	37	5	193-25	37	5
193-25	37	11	193-25	37	11
193-25	41	12	193-25	41	12
193-31	19	12	193-31	19	12
193-63	25	8	193-63	25	8
195-102	7	14	195-102	7	14
195-103	11	41</			