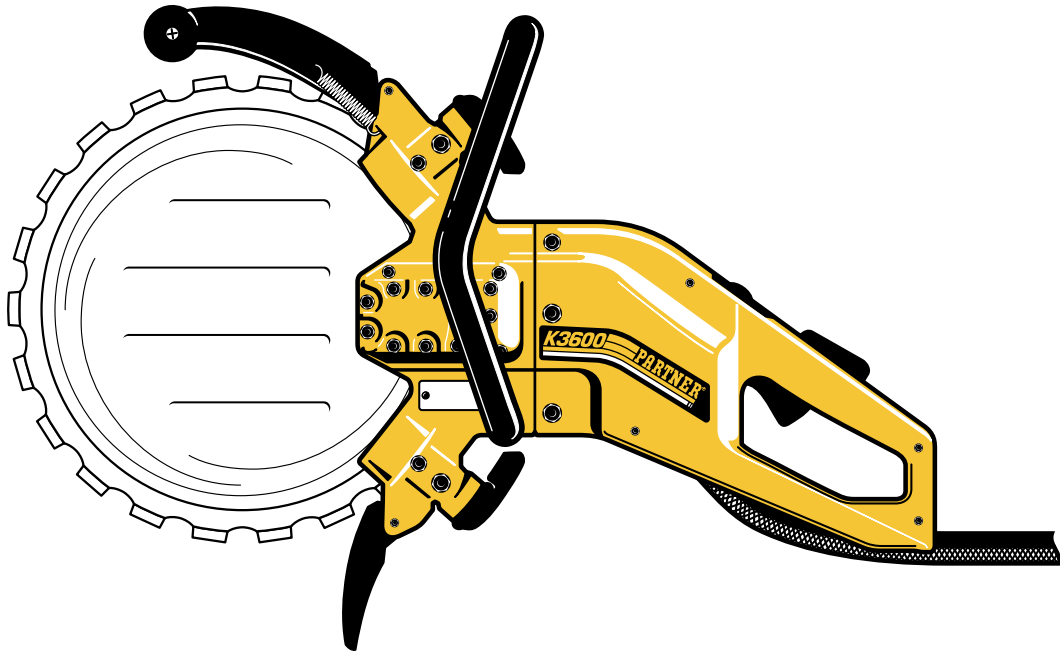


PARTNER

Illustrated Parts List 2000-05 CD

K3600

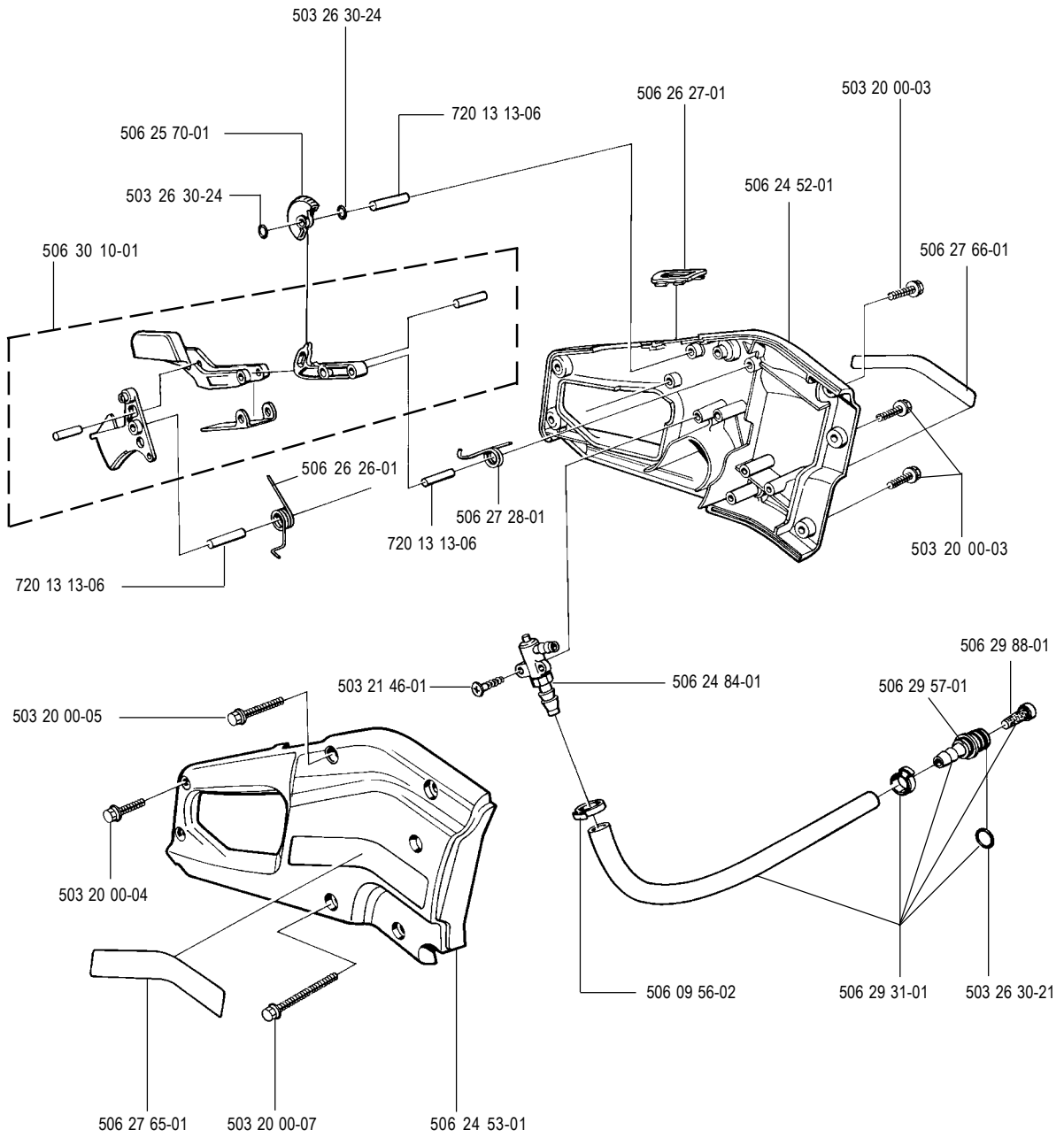
1999-2000



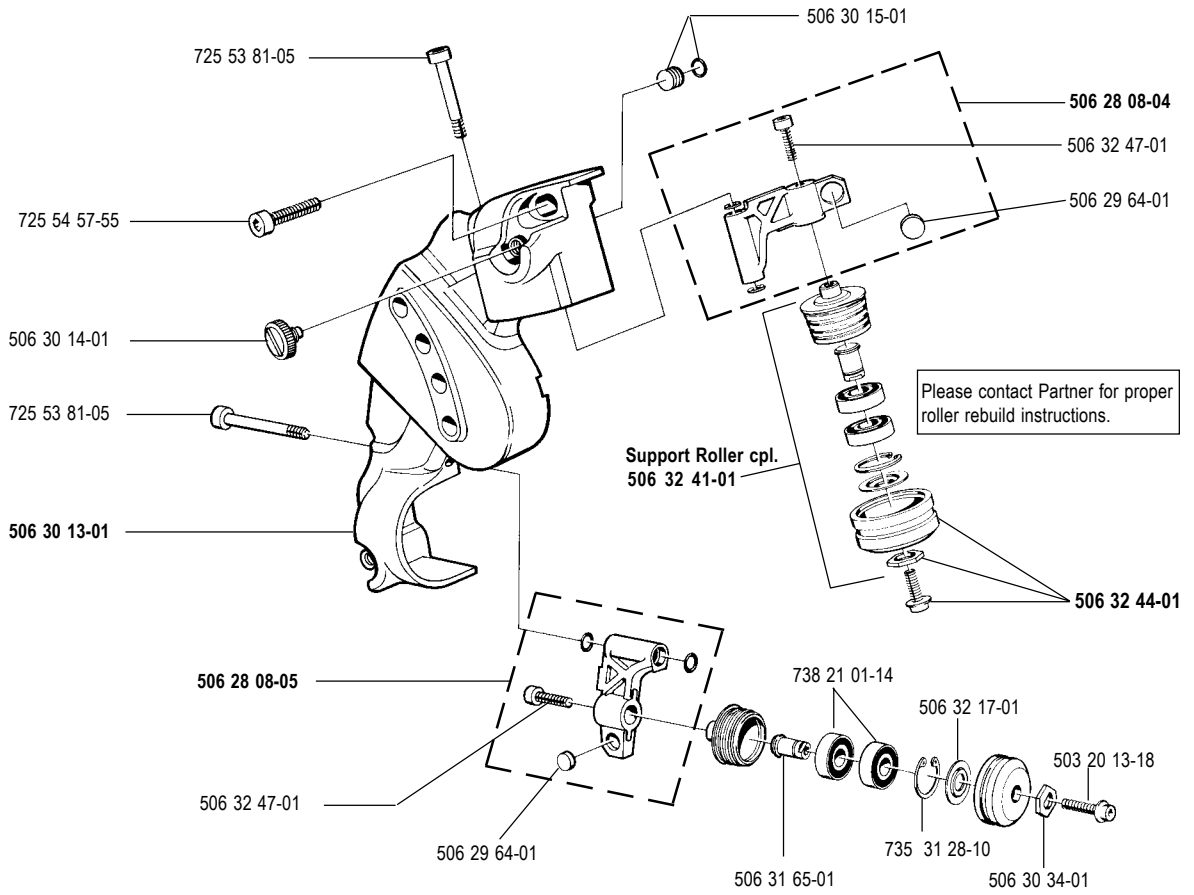
108 30 00-72

PARTNER®

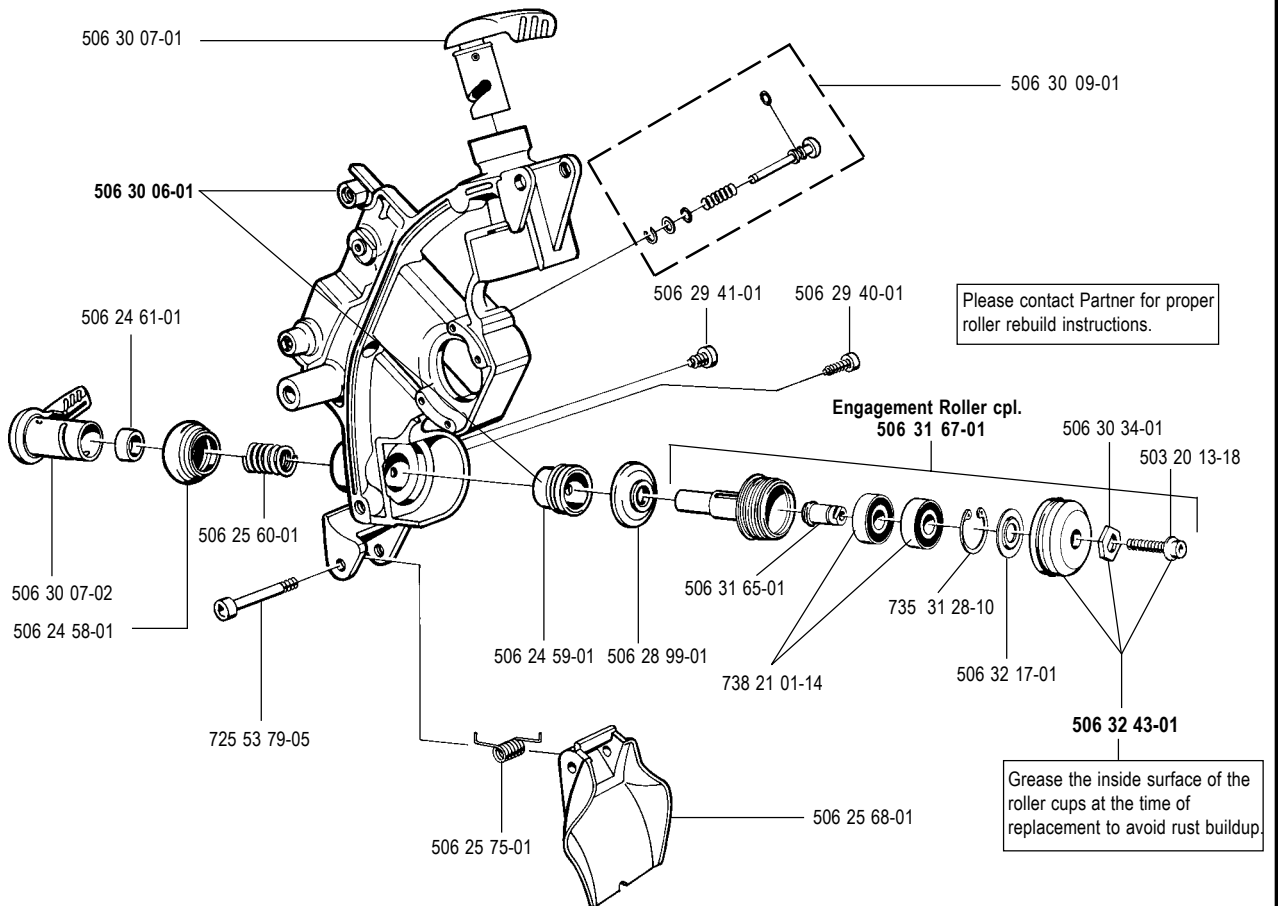
A



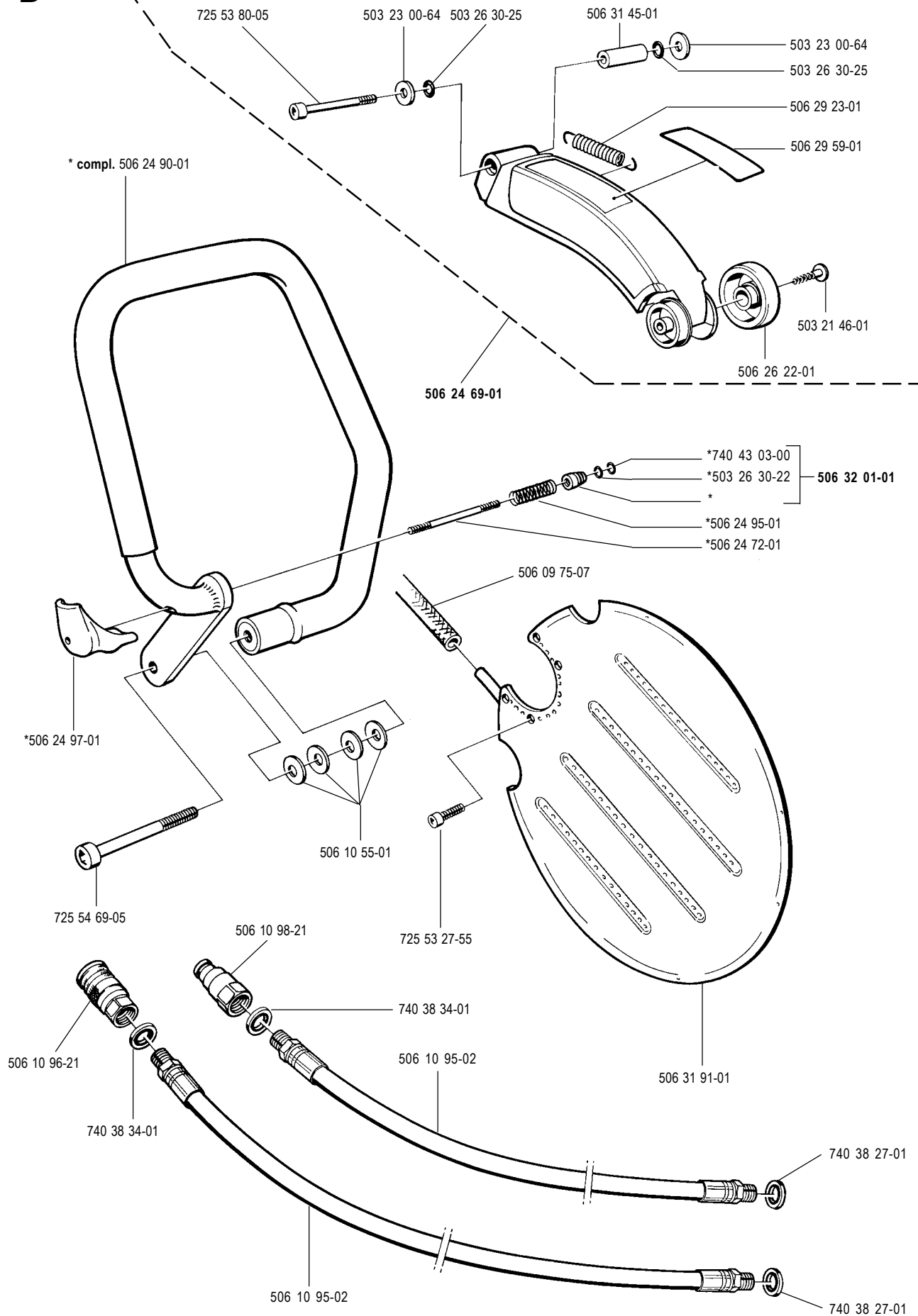
B



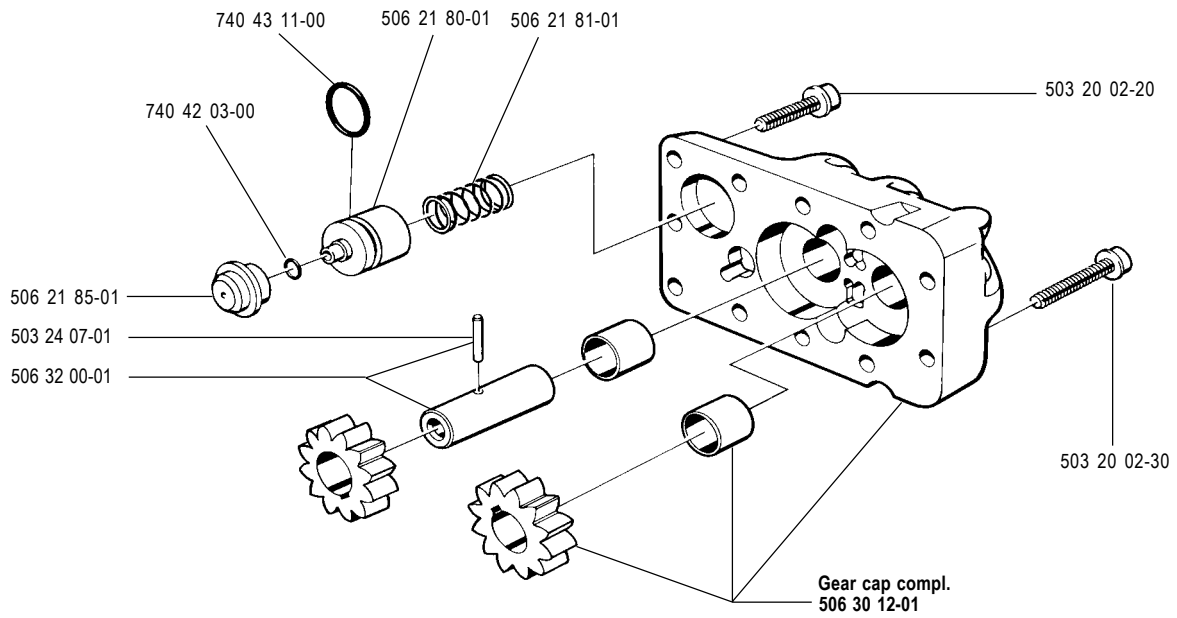
C



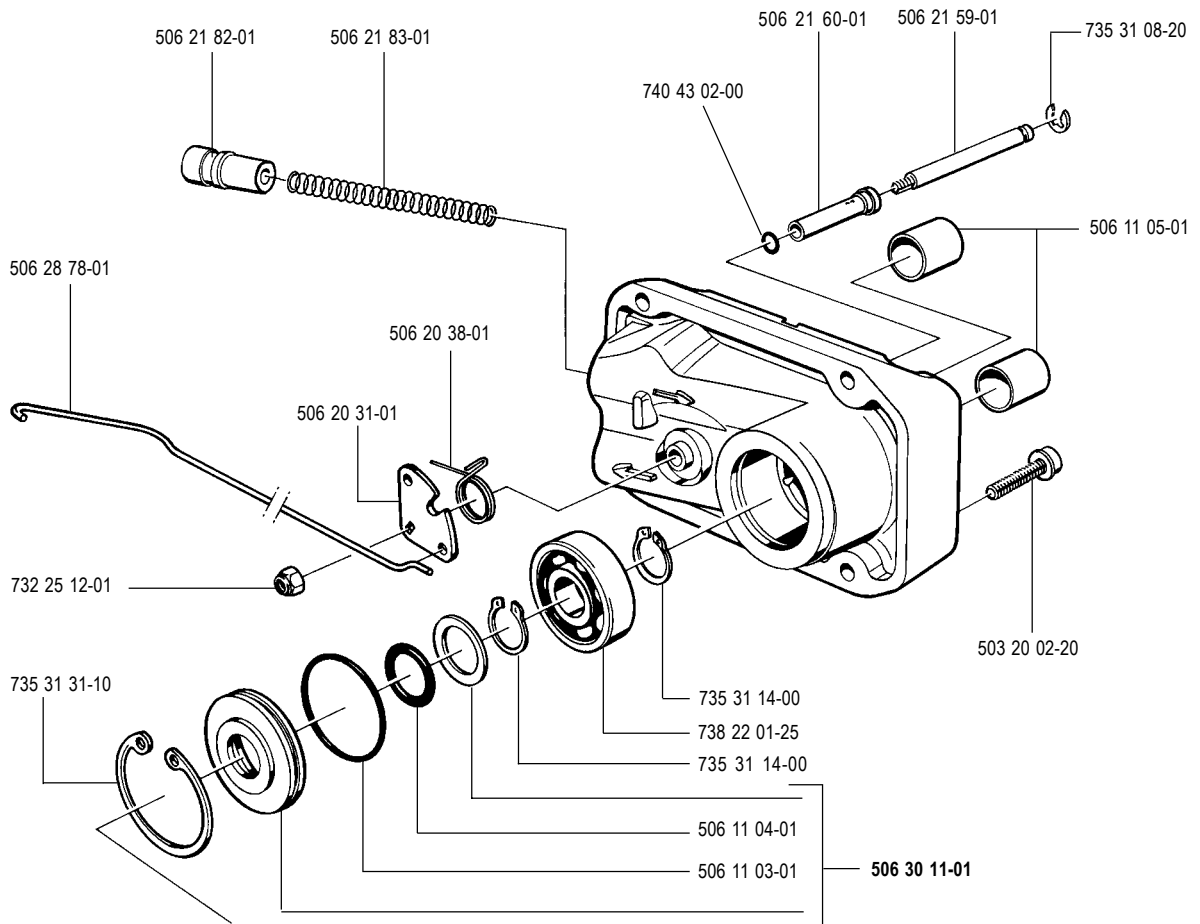
D



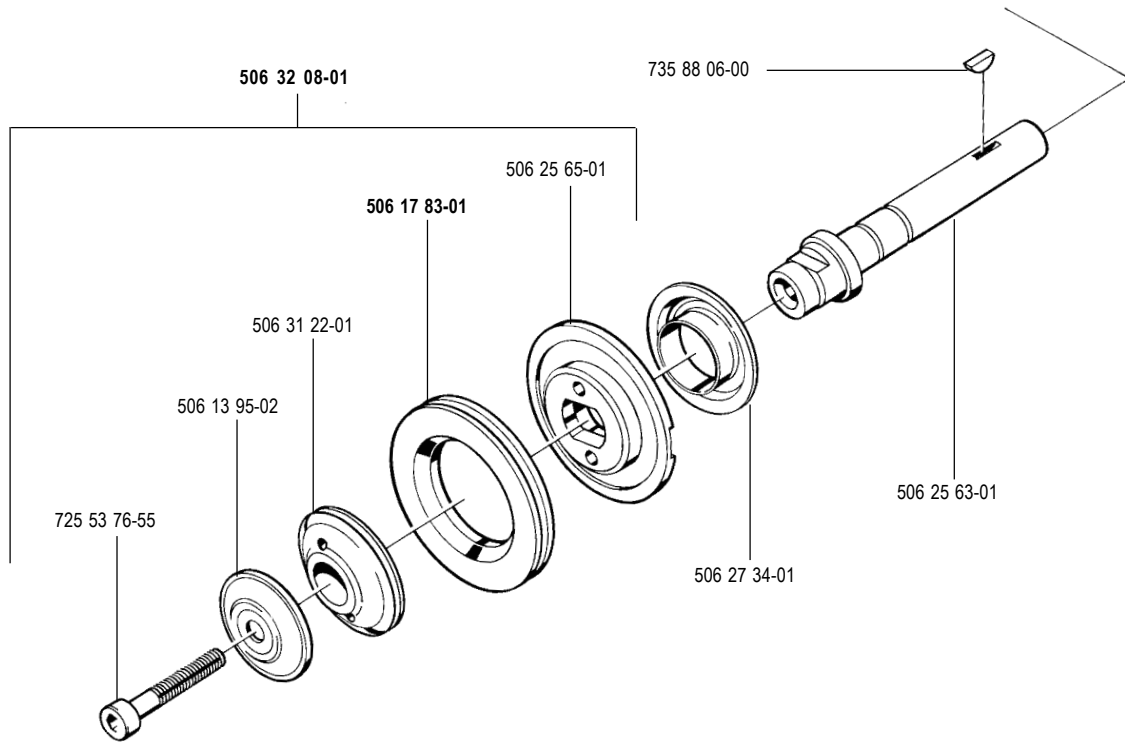
E Hydr. motor compl. 506 19 87-01



F Hydr. motor compl. 506 19 87-01

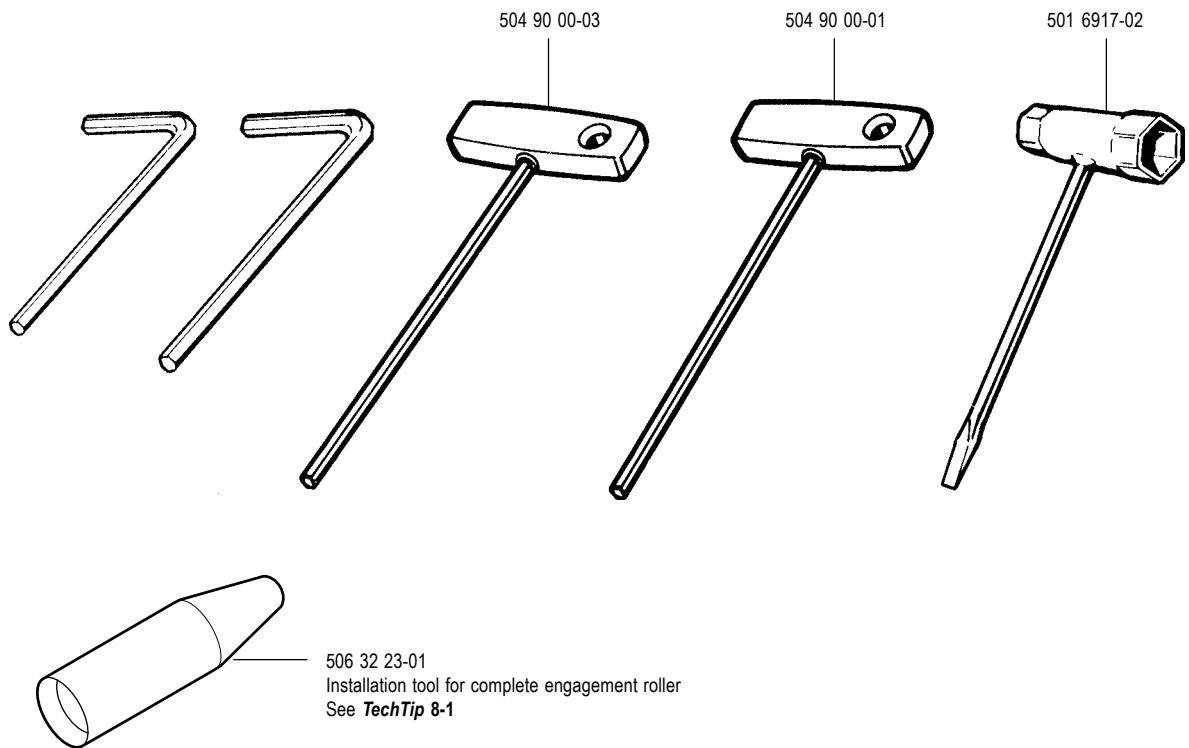


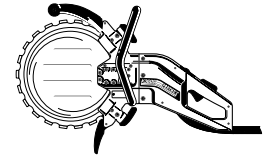
G



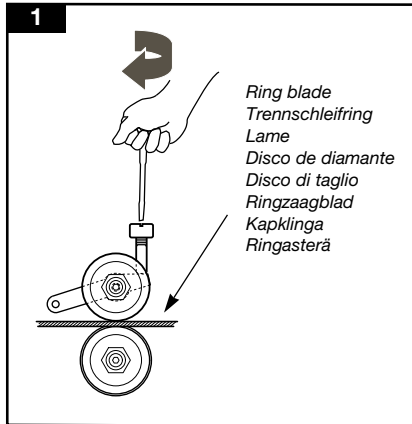
H

Tool kit 506 29 96-01

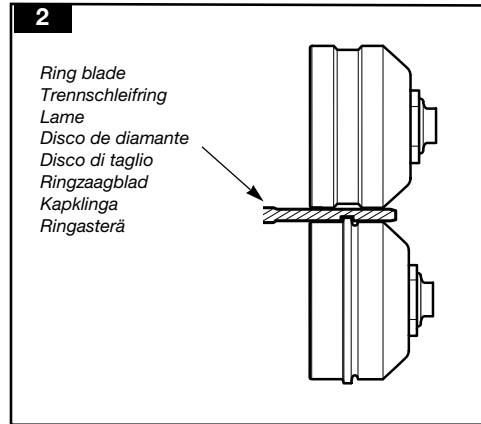




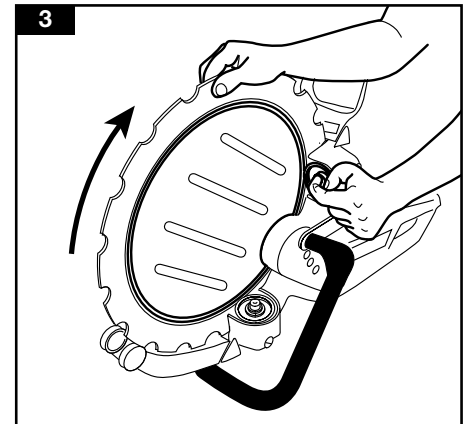
Blade adjustment



1. Tighten the adjustment screw clockwise until the rollers make contact with the blade, then add a 1/4 turn for tension.

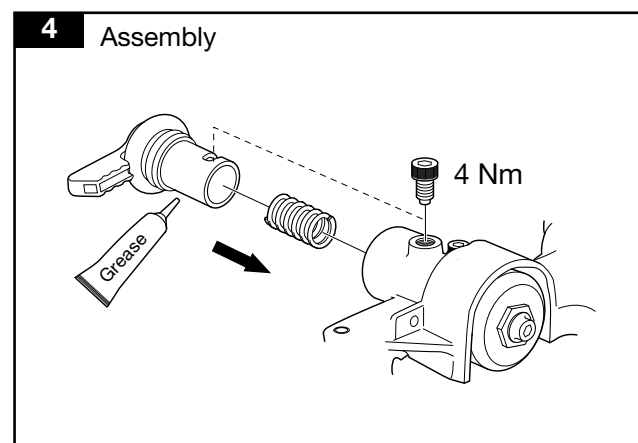
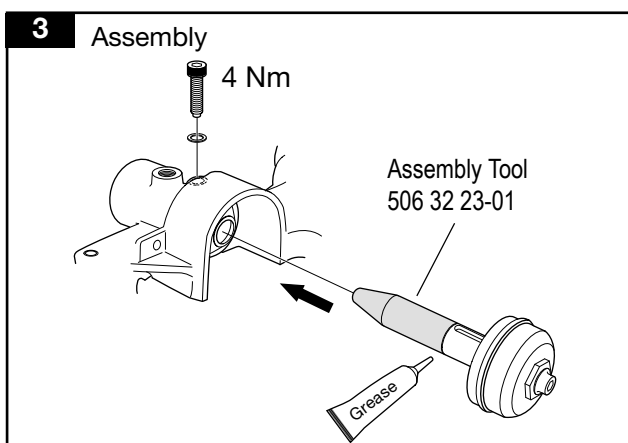
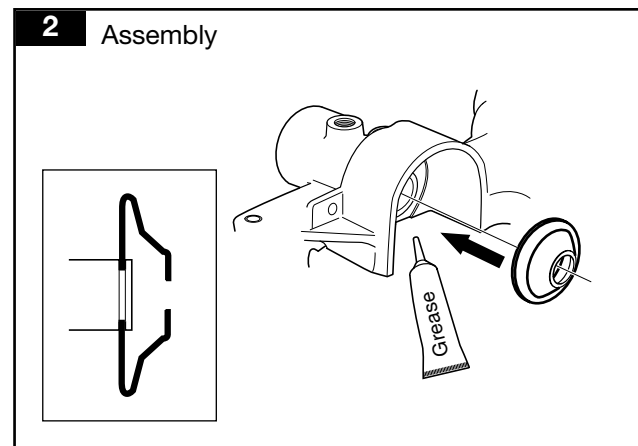
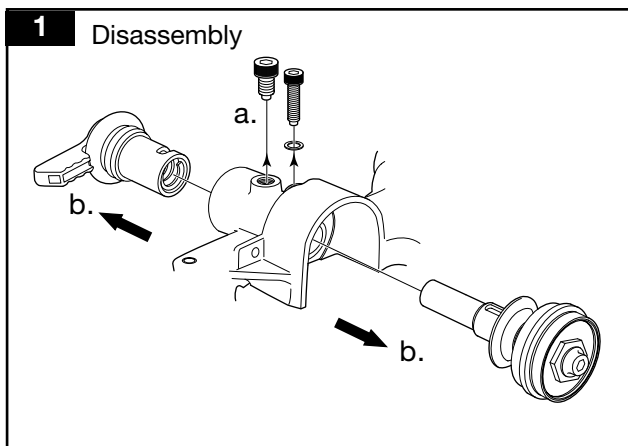


2. Make sure that the blade is properly installed and in full contact with the rollers.



3. Before locking the engagement roller handles, check for proper adjustment by stopping the support rollers with medium finger pressure while turning the blade.

Engagement roller installation



No.	Pos.	Denomination	No.	Pos.	Denomination	No.	Pos.	Denomination
501 69 17-02	H	Wrench	506 28 99-01	C	Bellow			
503 20 00-03	A	Screw M6SF 5x12	506 29 23-01	D	Spring			
503 20 00-04	A	Screw M6SF 5x16	506 29 31-01	A	Water hose, cpl			
503 20 00-05	A	Screw M6SF 5x25	506 29 40-01	C	Stop screw			
503 20 00-07	A	Screw M6SF 5x40	506 29 41-01	C	Stop screw			
503 20 02-20	E	Screw	506 29 57-01	A	Water fitting			
503 20 02-30	D	Screw	506 29 59-01	D	Warning decal			
503 20 13-18	B	Screw, rollers	506 29 64-01	B	Plug			
503 21 46-01	A, H	Screw	506 29 88-01	A	Screen			
503 23 00-64	D	Washer	506 29 96-01	H	Tool kit			
503 24 07-01	E	Pin	506 30 06-01	C	Main housing			
503 26 30-21	A	O-ring	506 30 07-01	C	Handle, upper			
503 26 30-22	D	O-ring	506 30 07-02	C	Handle, lower			
503 26 30-24	A	O-ring	506 30 09-01	C	Locking device			
503 26 30-25	D	O-ring	506 30 10-01	A	Trigger, kit			
504 90 00-01	H	Allen wrench	506 30 11-01	F	Seal, cpl			
504 90 00-03	H	Allen wrench	506 30 12-01	E	Cover motor, cpl			
506 09 56-02	A	Clamp	506 30 13-01	B	Support roller cover			
506 09 75-07	D	Hose	506 30 14-01	B	Adjusting screw			
506 10 55-01	D	Spring	506 30 15-01	B	Plug with O-ring			
506 10 95-02	D	Hose	506 30 34-01	B,C	Hex washer			
506 10 96-21	D	Coupler 3/8" (fem) FF, BSP	506 31 22-01	G	Flange washer			
506 10 98-21	D	Coupler 3/8" (male) FF, BSP	506 31 45-01	D	Pipe			
506 11 03-01	F	O-ring	506 31 65-01	B,C	Shaft			
506 11 04-01	F	O-ring	506 31 67-01	C	Engagement roller, cpl			
506 11 05-01	F	Bearing	506 31 91-01	D	Stabilizer blade			
506 13 95-02	G	Washer	506 32 00-01	E	Shaft			
506 17 83-01	G	Drive disc	506 32 01-01	D	Pin			
506 19 87-01	E,F	Hydr. motor, compl	506 32 08-01	G	Drive wheel, cpl			
506 20 31-01	F	Lever	506 32 17-01	B,C	Washer			
506 20 38-01	F	Spring	506 32 23-01	H	Installation tool			
506 21 59-01	F	Valve spindle	506 32 41-01	B	Support roller, cpl			
506 21 60-01	F	Sleeve	506 32 43-01	B,C	Engagement roller			
506 21 80-01	E	Valve	506 32 44-01	B	Support roller			
506 21 81-01	E	Spring	506 32 47-01	B	Screw, 6 x 22			
506 21 82-01	F	Piston	720 13 13-06	A	Pin, 5x28			
506 21 83-01	F	Spring	725 53 27-55	D	Screw, MC6 5x12			
506 21 85-01	E	Valve seat	725 53 72-55	B	Screw, 6x25			
506 24 52-01	A	Handle, left	725 53 76-55	G	Screw, 6x35			
506 24 53-01	A	Handle, right	725 53 79-05	C	Screw, 6x45			
506 24 58-01	C	Bellow	725 53 80-05	D	Screw, 6x50			
506 24 59-01	C	Sleeve	725 53 81-05	B	Screw, 6x55			
506 24 61-01	C	Bushing	725 54 57-55	B	Screw,, 8x40			
506 24 69-01	D	Blade guard, cpl	725 54 69-05	D	Screw, 8x90			
506 24 72-01	D	Screw	732 25 12-01	F	Nut, M4			
506 24 84-01	A	Valve, water, cpl	735 31 08-20	F	E-ring 4			
506 24 90-01	D	Handle, cpl	735 31 14-00	F	Clip			
506 24 95-01	D	Spring	735 31 28-10	B	Clip			
506 24 97-01	D	Locking handle	735 31 31-10	F	Retaining ring			
506 25 60-01	C	Spring	735 88 06-00	G	Woodruff key			
506 25 63-01	G	Motor shaft	738 21 01-14	B,C	Ball bearing 6001C3 2RS1			
506 25 65-01	G	Drive disc support	738 22 01-25	F	Ball bearing 6201-C3			
506 25 68-01	C	Splash guard	740 38 27-01	D	Washer, 1/4"			
506 25 70-01	A	Control, water	740 38 34-01	D	Washer, 3/8"			
506 25 75-01	C	Spring	740 42 03-00	E	O-ring			
506 26 22-01	D	Roller	740 43 02-00	F	O-ring			
506 26 26-01	A	Spring	740 43 03-00	D	O-ring			
506 26 27-01	A	Window	740 43 11-00	E	O-ring			
506 27 28-01	A	Spring						
506 27 34-01	G	Sealing						
506 27 65-01	A	Decal, right						
506 27 66-01	A	Decal, left						
506 28 08-04	B	Arm, upper						
506 28 08-05	B	Arm, lower						
506 28 78-01	F	Rod						