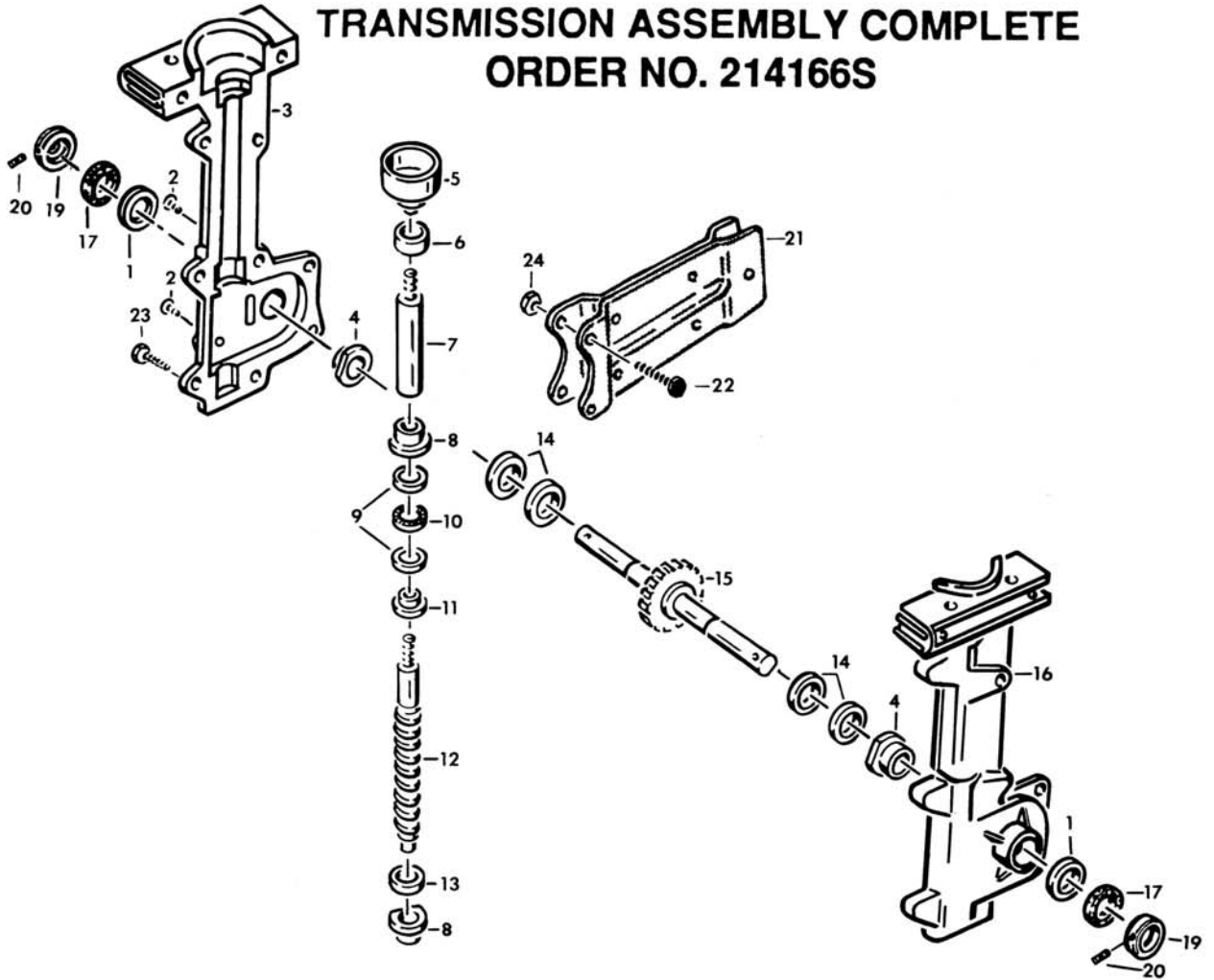


# TRANSMISSION ASSEMBLY COMPLETE ORDER NO. 214166S



ITEM NO.	ORDER NO.	DESCRIPTION	QTY. REQ.
1	213556S	Seal	2
2	214425S	Phillips Pan Hd. Thread Forming Screw, 1/4-20 x 1/2"	2
3	---	Housing, Reduction, R.H., Incl. 1 & 4	1
4	213561S	Bushing, Bronze	2
5	213551S	Drum & Hub, Clutch	1
6	206584S	Bearing, Roller	1
7	213547S	Shaft, Connecting	1
8	213552S	Bushing, Bronze	2
9	213667S	Washer, Thrust, Hardened	2
10	213668S	Bearing, Needle, Thrust	1
11	213666S	Washer, Adaptor	1
12	213548S	Shaft, Worm	1
13	205441S	Washer, Thrust	1
14	213805S	Washer, Thrust	4
15	213546S	Shaft, Tine, w/Worm Wheel	1
16	---	Housing, Reduction, L.H., Incl. 1 & 4	1
17	213569S	Felt Seal	2
19	213568S	Dirt Cap, Silver Metal	2
20	200741S	Set Screw, #10-32 x 1/4, Metal Dirt Cap	2
21	214069S	Bracket Assembly, Drag Stake	1
22	204842S	Screw, 1/4-20 x 1"	2
23	215010S	Screw, 1/4-20 x 7/8, Thrd. Form	6
24	201623S	Nut, 1/4-20	2

## LI'L HOE Adjustments/Maintenance

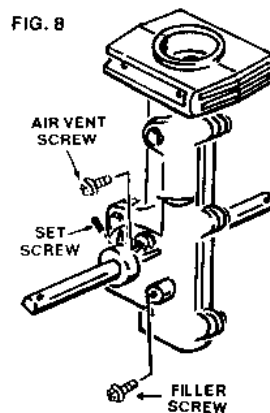
### **LUBRICATION OF TRANSMISSION** - *(Transmission is pre-lubricated at the factory).*

At the beginning of each tilling season, the transmission should be filled with grease.

This must also be done after every 25 hours of use during the season. Replacement grease should be a high quality petroleum based grease usually available in disposable guns at most hardware or automotive parts stores.

To lubricate transmission proceed as follows:

1. Lay tiller on left side so that the tine shaft is vertical.
2. Wearing heavy gloves, remove both right side tines.
3. Remove dust cap.



Metal dust cap is held on with a set screw. Back set screw out approximately four turns. Dust cap should then slide off of the tine shaft.

4. Remove air vent screw and fill hole screw from transmission.
5. Fill transmission by using grease gun or grease applicator at the till hole screw opening. Push gun or applicator against the opening so as to "seal" the nozzle of the gun or applicator against the casting embossment. Apply grease until grease begins to come out of top air vent hole.
6. Re-install air vent screw and till hole screw.
7. Re-install dust cap
8. Place a few drops of oil on tine shaft before installing tines.
9. Wearing heavy gloves. re-install tines. (For tine pattern, refer to Fig. #'s 11, 12 & 13.)
10. Re-install hairpin.